



Tribute bench in honor of President Franklin Delano Roosevelt on Founders Plaza at The National WWII Museum



**NOVEMBER 30 –  
DECEMBER 9, 2026**

Featuring historians Richard Frank and Jonathan Parshall, with special appearances by James Scott and Henry Sledge



Statue of Admiral Chester W. Nimitz standing near the entrance to the USS Missouri



Dear Graduates and Friends of the United States Naval Academy,

In the early morning hours of December 7, 1941, civilians and servicemembers alike in Pearl Harbor, Hawaii, faced terror as Japanese planes rained fire on O'ahu in a stunning surprise attack. The assault quickly plunged the United States into a world-changing war.

Each year, The National WWII Museum commemorates this “date which will live in infamy.” Pearl Harbor Day serves as a moment of national reflection. It reminds us not only of the 2,403 lives lost that morning, but also of the resilience that followed—ordinary Americans rising to meet extraordinary challenges, both on the Home Front and on the battlefield. Remembering this anniversary ensures that the courage, sacrifice, and unity of that generation continue to inspire us today.

Join the United States Naval Academy and the Museum in December 2026 for an all-new educational journey, custom-curated to honor the legacy of those who served, deepen your understanding of the events that shaped our world, and connect you with history in the very places it unfolded. The **85th Anniversary of Pearl Harbor** is an immersive itinerary that will take you from the vibrant city of New Orleans, home to America's official museum for WWII history, to the solemn waters of Pearl Harbor—where the USS *Arizona* Memorial stands as a poignant reminder of that fateful Sunday morning.

Along the way, engage with expert historians, witness rare artifacts, and hear firsthand accounts from our oral history collection that bring the past vividly to life. Joining this tour are world-renowned historians Richard Frank and Jonathan Parshall, who are regarded as authorities on the war in the Pacific. Special guests James Scott and Henry Sledge will also join portions of the tour.

For those wishing to extend their journey, an optional post-tour extension, **The Battle for Peleliu** with historian James Scott, explores the islands of Guam, Koror, and Palau for eight nights.

Amy Garwood  
Director, Alumni Travel  
US Naval Academy Alumni Association & Foundation  
301 King George Street  
Annapolis, MD 21402





HONOR | EXPLORE | REFLECT



VIEW OF USS ARIZONA MEMORIAL FROM THE USS MISSOURI



ROAD TO TOKYO EXHIBIT



LIBERATION PAVILION



RICHARD FRANK AND JONATHAN PARSHALL ABOARD USS MISSOURI



USS BOWFIN



CAMPAIGNS OF COURAGE PAVILION



PINK PANCAKES AT THE PINK PALACE, WAIKIKI





Rated the top attraction in New Orleans and among the best museums in the world, The National WWII Museum explores the story of the American experience in World War II through immersive exhibits, multimedia experiences, educational resources, and an expansive collection of artifacts and personal accounts. The Museum's New Orleans campus provides vivid insight into *the war that changed the world*, but nothing can tell its story more dramatically than a visit to the sites where victory was fought for and won.

As part of the nation's preeminent institution for preserving and sharing WWII history, the Museum's Travel Program is dedicated to providing the highest quality educational content by creating custom-curated itineraries, arranging the finest boutique hotel accommodations, procuring comprehensive local culinary experiences in the countries we visit, and touring aboard premium motor coaches and cruise ships. Experience a journey in first-class comfort to the beaches, bridges, cities, and villages where crucial battles took place and history-defining decisions were made.

Traveling with The National WWII Museum offers a unique and enriching experience that goes beyond typical group tour itineraries—it provides a meaningful journey that honors the past while inspiring future generations.

## MUSEUM MISSION

The National WWII Museum tells the story of the American experience in *the war that changed the world*—why it was fought, how it was won, and what it means today—so that all generations will understand the price of freedom and be inspired by what they learn.







WWII VETERAN JACK MORGAN ON TOUR IN HAWAII



# WWII

## THE NATIONAL WWII MUSEUM

### TRAVEL



#### TRAVEL WITH THE AUTHORITY ON WWII EDUCATION:

##### — EXPERT-LED EXPERIENCES

Our tours are guided by a combination of expert historians, local guides, and Museum staff members who provide in-depth insights, drawing from our immense collections of artifacts, oral histories, and personal accounts from WWII veterans that you won't find on other tours.

##### — IMMERSIVE LEARNING

Each tour is designed to offer a deep dive into World War II, engaging lifelong learners of all backgrounds—from those with a vast knowledge of history to others just beginning to explore the events that shaped our world.

##### — ENGAGING COMMUNITY

Our tours have created a community of passionate history enthusiasts who often have personal links to those who fought and won the war. Our itineraries include opportunities to foster meaningful connections with other travelers who share an interest in understanding the past.

##### — SUPPORTING OUR MISSION

By traveling with us, you contribute to the preservation of WWII history and support educational initiatives that honor the sacrifices made during the war.

##### — LUXURY ACCOMMODATIONS AND FINE DINING

Our team supports the local economies of the places we visit, staying in hand-selected boutique hotel accommodations and providing dining experiences that showcase locally sourced ingredients.



Scan QR  
code to  
download  
Museum  
Map



BOOK BY JANUARY 30, 2026,  
TO SAVE \$1,000 PER PERSON



# 85TH ANNIVERSARY OF PEARL HARBOR

NOVEMBER 30 – DECEMBER 9, 2026

~~\$11,599~~ **\$10,599\*** per person based on double occupancy  
~~\$12,899~~ **\$11,899\*** single occupancy

\*Book early and save. \$399 per person taxes and fees are additional. Flights are not included.  
\$2,500 deposit per person, final payment due May 25, 2026.

## INCLUSIVE VALUE:

- Travel with featured tour historians Richard Frank and Jonathan Parshall to New Orleans and Honolulu, along with John Curatola, PhD from the Jenny Craig Institute for the Study of War and Democracy
- Special dinner and presentation by Henry Sledge in New Orleans
- Exclusive dinner aboard the USS *Missouri* with special presentation by James Scott
- Four nights at The Higgins Hotel New Orleans, Curio Collection by Hilton
- Five nights at the Royal Hawaiian Hotel in Honolulu
- 9 breakfasts, 5 lunches, 4 receptions, and 4 dinners
- Beer, wine, coffee, water, tea, and soft drinks at all included meals and receptions
- Personal listening devices on all included touring
- Entrance fees to all sites, museums, and attractions included in the itinerary
- Video oral history presentations from the Museum's collection
- Private, air-conditioned motor coach transportation, including bottled water on excursions
- All airport transfers throughout program itinerary (when arriving and departing on scheduled program dates)\*
- Gratuities to local guides, drivers, porters, and included meal services
- Informative custom guidebook including battlefield maps, archival images, artifact spotlights, and digital content to supplement your journey

\*Airport transfers are included with additional hotel nights if booked through the Educational Travel Program





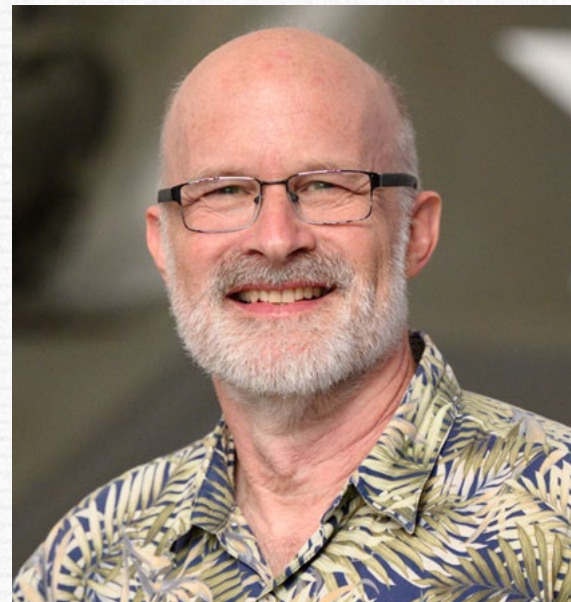
## FEATURED HISTORIANS



### RICHARD B. FRANK

#### *Author & Historian*

Richard Frank is an internationally recognized leading authority on the Asia-Pacific war. He published his first book, *Guadalcanal*, in 1990. His second work, *Downfall: The End of the Imperial Japanese Empire* (1999), has been called one of the six best books in English about World War II. Both Random House books won awards and became main selections of the History Book Club. In 2007, Frank completed *MacArthur* as part of the Palgrave Great Generals series. The first volume of his trilogy on the Asia-Pacific war in 1937–45, *Tower of Skulls*, was a finalist for the Gilder Lehrman Prize for Military History in 2021. In addition to numerous appearances on television and radio, he was a consultant for the epic HBO miniseries *The Pacific*. Frank is a founding member of The National WWII Museum's Presidential Counselors advisory board.



### JONATHAN PARSHALL

#### *Author & Historian*

Jonathan Parshall is coauthor of *Shattered Sword: The Untold Story of the Battle of Midway*. Widely published on the Pacific war, his work has appeared in the *US Naval War College Review*, the US Naval Institute's *Naval History and Proceedings* magazines, the Australian War Memorial's *Wartime* magazine, *World War II* magazine, the *Northern Mariner*, and many others. He is a frequent speaker at venues such as The National WWII Museum, the Pritzker Military Museum & Library, the National Museum of the Pacific War, and the Pearl Harbor Aviation Museum. He has appeared on the Discovery Channel, History Channel, Netflix, National Geographic, and the Smithsonian Channel. Parshall is a coauthor of *Fighting in the Dark* (2023), which details the history of naval night combat, as well as a forthcoming narrative history of the year 1942, covering all theaters of the war. He is a graduate of Carleton College and the Carlson School of Management.

## FEATURED HISTORIANS



## SPECIAL GUESTS



### JAMES M. SCOTT

*Author & Historian*

#### **Farewell Dinner aboard USS Missouri**

James Scott, a former Nieman Fellow at Harvard University, is the author of *Target Tokyo: Jimmy Doolittle and the Raid That Avenged Pearl Harbor*, which was a 2016 Pulitzer Prize finalist and named one of the best books of the year by *Kirkus Reviews*, *The Christian Science Monitor*, and *Fort Worth Star-Telegram*. His other works include *The War Below: The Story of Three Submarines That Battled Japan* and *The Attack on the Liberty: The Untold Story of Israel's Deadly 1967 Assault on a U.S. Spy Ship*, which won the Rear Admiral Samuel Eliot Morison Award. Scott's fourth book, *Rampage*, was named one of the Best Books of 2018 by the editors at Amazon, *Kirkus Reviews*, and *Military Times*. In addition, Scott has been interviewed on national television, on public radio, and in newspapers ranging from *The New York Times* to *The Washington Post*. Scott also was a featured presenter on the Smithsonian Channel's television series *Hell Below*. He has presented at several of The National WWII Museum's International Conferences on World War II and has served as a featured historian on many of the Museum's Educational Travel Tours. Scott lives with his wife and two children in Mount Pleasant, South Carolina.



### HENRY SLEDGE

*Author & Historian*

#### **Farewell Dinner at Antoine's in New Orleans**

Henry Sledge is the son of WWII veteran and renowned author Eugene Sledge, who wrote *With the Old Breed at Peleliu and Okinawa* and *China Marine*. Through many conversations with his father about his experiences across the islands of the Pacific, Henry Sledge formed a deep and abiding passion for all aspects of WWII history. Sledge's book *The Old Breed... The Complete Story Revealed*, published in June 2025, includes his late father's unpublished writings. He has worked as a consultant for Valor Studios and has been published in *Valor*, *Naval History*, and *World War II* magazines. Sledge is currently collaborating on a documentary film titled *Cowboy Down*, about WWII Marine fighter pilot Major Robert "Cowboy" Stout and Fighter Squadron VMF-114. He is a co-host of the *What's the Scuttlebutt* podcast and has appeared as a guest on numerous others, including *We Happy Few*, *The WW2 Podcast*, *We Have Ways of Making You Talk*, *Tall Tales with Taco*, *WW2TV*, and *Reel History*. He holds a BA from Auburn University and has over 20 years of experience in the heavy equipment industry.

## SPECIAL GUESTS





## THE NATIONAL WWII MUSEUM, NEW ORLEANS

### ROAD TO TOKYO EXHIBIT

Explore The National WWII Museum's *Road to Tokyo* exhibit, where the story of the Pacific war unfolds from the opening blow at Pearl Harbor to the final battles against Japan. Guests will experience immersive environments, rare artifacts, and firsthand accounts that trace the course of the war across jungles, oceans, and islands. This powerful introduction provides the historical foundation for the tour, highlighting how the attack on December 7, 1941, set in motion a global struggle that reshaped the 20th century.



## ST. CHARLES AVENUE, NEW ORLEANS

### FORMER JAPANESE CONSULATE

New Orleans played its own surprising role in the tensions of the era. Japan maintained a consulate on the city's elegant St. Charles Avenue, a presence that seemed routine until the morning of the Pearl Harbor attack. As news of the assault spread, crowds gathered outside while staff frantically burned papers and destroyed records. Guests will travel to the site aboard the city's historic St. Charles streetcar, linking the charm of the avenue with the dramatic local response to the day that changed America.

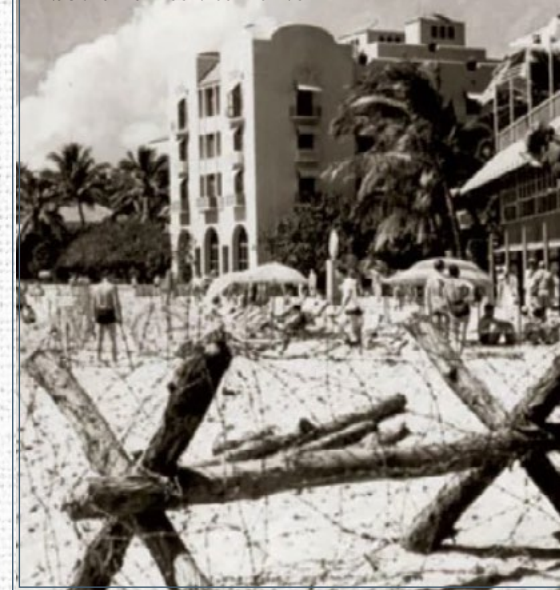


## WAIKIKI, HONOLULU, HAWAII

### THE ROYAL HAWAIIAN "PINK PALACE"

Hawaii's most iconic resort, the Royal Hawaiian Hotel, known as the "Pink Palace of the Pacific," became part of the wartime story in unexpected ways. Requisitioned by the US Navy after the attack on Pearl Harbor, the glamorous beachfront hotel was transformed into a rest and recuperation center for sailors and submariners returning from harrowing patrols. Today, pink stucco walls and elegant gardens recall both the golden age of Waikiki and its role as a haven for sailors during wartime. This feature highlights how even places of leisure were drawn into the larger narrative of the Pacific war.

Sailors enjoy R&R outside the Royal Hawaiian Hotel. Courtesy of the National Park Service Archive



## PEARL HARBOR, O'AHU, HAWAII

### FORD ISLAND

At the very center of Pearl Harbor, Ford Island was surrounded by battleships, airfields, and hangars that came under relentless assault on December 7. The devastation was immediate and overwhelming, with torpedoes and bombs tearing into the fleet and aircraft burning along the runways. Today, the island is home to some of Pearl Harbor's most significant sites, including the USS *Arizona* Memorial and the Battleship *Missouri* Memorial. This stop places guests at the heart of the attack, offering space for reflection and remembrance on the 85th anniversary.

A burned US Army Air Forces Boeing B-17C Flying Fortress rests near Hangar 5 at Hickam Airfield, O'ahu, Hawaii, on December 7, 1941. Courtesy of the National Archives and Records Administration





## MONDAY, NOVEMBER 30, 2026

Guests arrive into Louis Armstrong New Orleans International Airport (MSY)\* and privately transfer to The Higgins Hotel New Orleans, Curio Collection by Hilton. Enjoy lunch on your own prior to meeting the tour group for a screening of *Beyond All Boundaries*, the Museum's exclusive 4D experience. Originally premiering in 2009 and fully remastered in 2025, *Beyond All Boundaries* plunges viewers into a 48-minute immersive journey from Pearl Harbor to V-J Day, using cutting-edge special effects to bring America's WWII story to life. Viewers feel the treads of Tiger Tanks rumbling across North Africa's deserts, steam rising from the jungles of Guadalcanal, and snow falling during the Battle of the Bulge. Tom Hanks narrates as an all-star celebrity cast voices the first-person accounts of those who witnessed history unfold.

After, join your Museum host and fellow travelers in The Higgins Hotel for cocktails, canapés, and an introductory lecture from featured tour historian Jonathan Parshall. Following the reception and lecture, enjoy a group dinner in US Freedom Pavilion: The Boeing Center.

**Accommodations: The Higgins Hotel (R, D)**

*\*Airfare not included in the cost of the program.*



RECEPTION AT HIGGINS HOTEL



DINNER IN US FREEDOM PAVILION: THE BOEING CENTER

## TUESDAY, DECEMBER 1, 2026

Today's touring begins with a private, early-access guided tour of the Richard C. Adkerson & Freeport-McMoRan Foundation *Road to Tokyo: Pacific Theater Galleries* housed within the Museum's Campaigns of Courage pavilion. After, participate in the Curator's Collection: Out of the Vault experience. Hosted by a Museum curator, this presentation provides a behind-the-scenes look at hand-selected Pearl Harbor and Pacific Campaign artifacts from the collection that are not currently on display.

During an included group lunch, a Museum historian presents a Pearl Harbor Lunchbox Lecture in the Madlyn and Paul Hilliard Research Library.

The afternoon is free to explore the Museum at your own pace, take a guided tour of the city aboard the Hop-On, Hop-Off double-decker bus, or relax. Enjoy an evening at leisure to indulge in New Orleans's world-famous cuisine at a restaurant of your choice.

**Accommodations: The Higgins Hotel (B, L)**



GUIDED TOUR OF ROAD TO TOKYO



OUT OF THE VAULT EXPERIENCE



## WEDNESDAY, DECEMBER 2, 2026

The second day of Museum touring starts with *The Arsenal of Democracy: The Herman and George R. Brown Salute to the Home Front*. This exhibit traces America's path to war, from the tensions of the interwar period to the massive mobilization and innovation of the wartime manufacturing economy on the Home Front. Artifacts and footage from the attack on Pearl Harbor underscore the chaos and shock of that fateful day, which marked the United States' entry into World War II. Finish this morning's touring with a special visit to the John E. Kushner Restoration Pavilion, home to the Museum's patrol torpedo boat, PT-305. Observe the fully restored vessel up close and learn of her wartime crew members and tours of duty.

After a group lunch at The American Sector Restaurant & Bar, board a privately chartered streetcar tour on the famous St. Charles Avenue line. For more than 165 years, the St. Charles streetcar has transported residents and tourists alike along "The Jewel of America's Grand Avenues." During the tour, see the Anthemion House, located at 4631 St. Charles Avenue, which was the headquarters of the Japanese Consulate from 1938 to 1941. On the morning of December 7, 1941, a mob estimated to be 2,000 people strong gathered outside as consulate staffers emerged and began burning papers. Our group is invited inside the consulate for a private cocktail reception. This evening is at leisure.

**Accommodations:** The Higgins Hotel (B, L, R)



ST. CHARLES AVENUE STREETCAR

## THURSDAY, DECEMBER 3, 2026

The final day of touring in New Orleans starts in the Museum's capstone exhibit hall: Liberation Pavilion. This guided tour takes you through the end of World War II, the Holocaust, the immediate postwar years, and the war's continuing impact today. Explore the progress of and challenges to liberty around the world in the Priddy Family Freedom Theater. Featuring cutting-edge technology and a revolving theater, this cinematic experience highlights just how much was at stake during World War II and the deeper meaning of Allied victory. Powerful original visuals take you from the political tensions of the early 20th century through scenes of wartime destruction and into the postwar era of hope, justice, and prosperity.

Lunch and the afternoon are at leisure to contemplate everything you learned while at The National WWII Museum. Your last night in New Orleans offers a farewell dinner at Antoine's Restaurant, the oldest family-run restaurant in United States. Among the restaurant's private dining rooms is the Japanese Room, which hosted many large banquets and dances until the attack on Pearl Harbor. As the United States rushed into the war following December 7, 1941, Antoine's closed the room for more than 40 years. Henry Sledge—whose father, Eugene B. Sledge, was a Pacific war veteran and the author of *With the Old Breed: At Peleliu and Okinawa*—gives a presentation during dessert.

**Accommodations:** The Higgins Hotel (B, R, D)



PRIDDY FAMILY FREEDOM THEATER



## FRIDAY, DECEMBER 4, 2026

Fly from New Orleans (MSY) to Honolulu's Daniel K. Inouye International Airport (HNL)\*. Airport transfers from The Higgins Hotel will be provided based on your flight information. After arriving in Honolulu, check into the five-star Royal Hawaiian Hotel, affectionately nicknamed the "Pink Palace of the Pacific." During World War II, the Royal Hawaiian was used exclusively by the US military as an R&R center. Many renowned celebrities have vacationed at the Royal Hawaiian, including Marlene Dietrich, Clark Gable, and Frank Sinatra. Even General Douglas MacArthur and President Franklin D. Roosevelt once stayed at the Pink Palace. Settle into Waikiki and enjoy an afternoon at leisure.

This evening, join the group for a welcome reception and dinner on the hotel's Ocean Lawn, overlooking the Pacific Ocean and Diamond Head.

**Accommodations: The Royal Hawaiian Hotel (B, R, D)**

*\*Airfare not included in the cost of the program.*



OCEAN LAWN AT THE ROYAL HAWAIIAN HOTEL

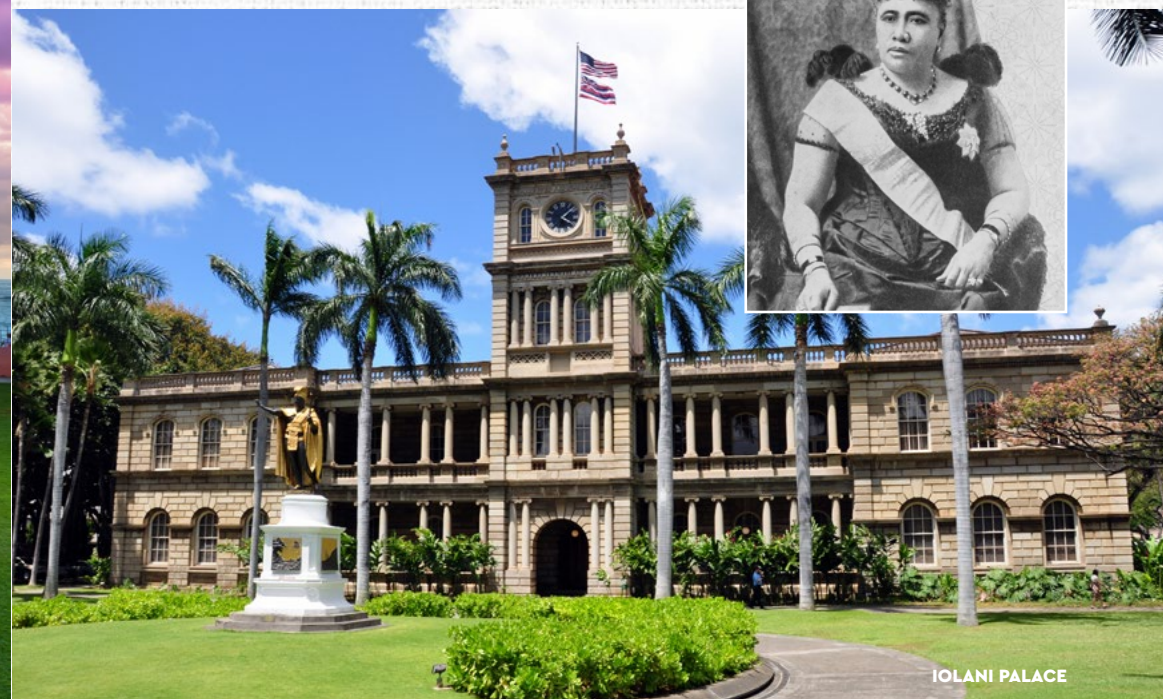
## SATURDAY, DECEMBER 5, 2026

This morning, visit Fort DeRussy, which houses the US Army Museum of Hawaii. Batteries at Fort DeRussy, including Battery Randolph and Battery Dudley, were responsible for the defense of Honolulu Harbor. Key exhibits at the US Army Museum of Hawaii explore the military organizations of the Hawaiian monarchy; Coast Artillery in Hawaii; Hawaii's critical role in World War II, Korea, and Vietnam; the "Go For Broke" Nisei soldiers; General Shinseki Gallery; and a Hawaiian recipients of our nation's two highest awards for valor.

After lunch on your own, enjoy an optional visit to Iolani Palace, the home of Hawaii's last reigning monarchs and the location of the official royal residence until 1893. Now a National Historic Landmark and the only official royal residence in the United States, Iolani Palace is restored to its former grandeur.

This evening, join Jonathan Parshall for a lecture followed by an evening at leisure.

**Accommodations: The Royal Hawaiian Hotel (B)**



IOLANI PALACE



# Historical Perspective

## DECODING VICTORY: JOSEPH ROCHEFORT AND THE BAND OF THE USS CALIFORNIA

In the wake of the Japanese attack on Pearl Harbor, the US Navy faced a daunting challenge: how to anticipate the enemy's next moves in a rapidly escalating Pacific conflict. Commander Joseph Rochefort, a seasoned naval officer and linguist, had already been studying Japanese communications and leading a small cryptographic unit known as Station HYPO at Pearl Harbor. After the attack, the urgency to decipher the Japanese naval codes became paramount, and Rochefort approached the task with a combination of skill, intuition, and unconventional thinking. He felt a sense of guilt for not anticipating the attack and realized that understanding the Japanese fleet's intentions could mean the difference between victory and further disaster.

Among those reassigned to assist Rochefort's unit were members of the USS *California's* band. The battleship had been heavily damaged during the attack on Pearl Harbor, leaving its musicians without their instruments and traditional duties. Recognizing their training in pattern recognition, attention to detail, and memory—skills honed through years of reading and interpreting complex musical scores—Rochefort enlisted them as codebreakers. Their contribution was unusual but highly effective, demonstrating how specialized talents could be applied to one of the most critical intelligence operations of the war.

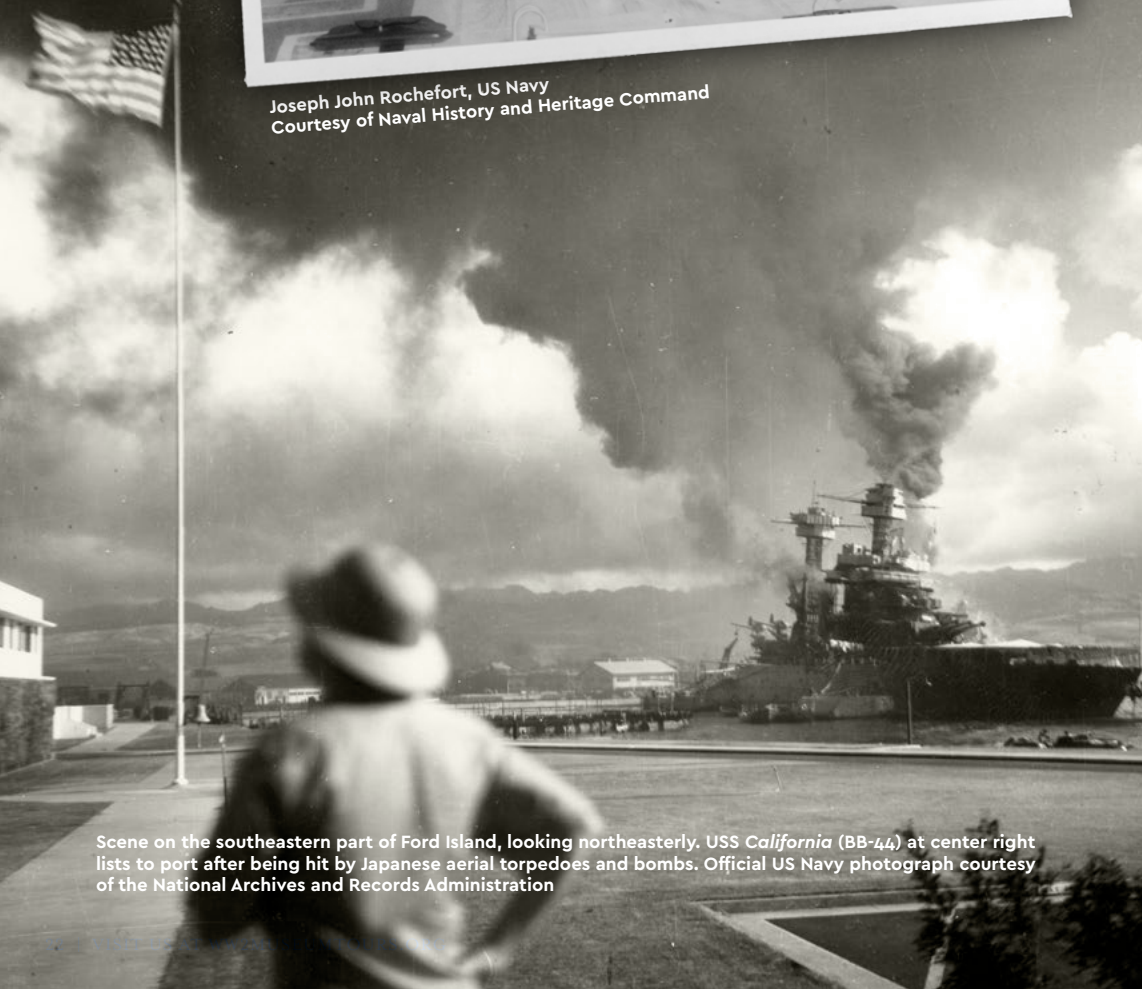
By early 1942, Station HYPO had made significant progress in deciphering the Japanese JN-25 operational code. One crucial breakthrough involved identifying a coded reference to a location called "AF," which Rochefort and his team deduced to be Midway Atoll. This intelligence was confirmed in part through clever ruses, including false messages sent to see whether Japanese transmissions referenced Midway. The ruse worked, and with this knowledge, Admiral Chester W. Nimitz could strategically position US naval forces to ambush the Japanese fleet, setting the stage for a decisive confrontation.

The resulting Battle of Midway in early June 1942 became a turning point in the Pacific theater. The United States sank four Japanese aircraft carriers while losing only one of its own, halting Japan's advance and shifting the momentum of the war. The success of Midway owed as much to ingenuity in intelligence as to naval firepower. Rochefort's leadership and the contributions of the USS *California's* musicians exemplify the creativity and resourcefulness that characterized American efforts behind the scenes.

Ultimately, the story of Rochefort and the *California* band ties directly back to Pearl Harbor. The musicians were only available for codebreaking because their ship had been damaged during the attack, and the urgency of intelligence work stemmed from the very shock of December 7, 1941. Without the lessons, losses, and aftermath of Pearl Harbor, the decisive actions at Midway and the pivotal shift in the Pacific war might never have been possible.



Joseph John Rochefort, US Navy  
Courtesy of Naval History and Heritage Command



Scene on the southeastern part of Ford Island, looking northeasterly. USS *California* (BB-44) at center right lists to port after being hit by Japanese aerial torpedoes and bombs. Official US Navy photograph courtesy of the National Archives and Records Administration



## SUNDAY, DECEMBER 6, 2026

Visit the historic Natsunoya Tea House, which stands on the location where Takeo Yoshikawa—Japan’s most famous WWII spy—tracked movements of US Navy ships in preparation for the Japanese attacks. Over lunch, hear from a featured tour historian who will present a lecture on espionage and its role in the Pearl Harbor attack.

After lunch, head to Ford Island and visit the USS *Oklahoma* Memorial. During the attack, the *Oklahoma* was one of the first American ships hit, resulting in 429 men losing their lives. Next, experience the USS *Utah* Memorial and explore the Pacific Aviation Museum, which houses a host of WWII aircraft used in the Pacific theater.

Visit the top of the Ford Island Control Tower and take a first-class guided tour, which includes a ride in the originally restored elevator to the upper cab, where you will be met with a 360-degree view of the battlefield from the observation deck. Return to Waikiki for an evening at leisure.

**Accommodations: The Royal Hawaiian Hotel (B, L)**



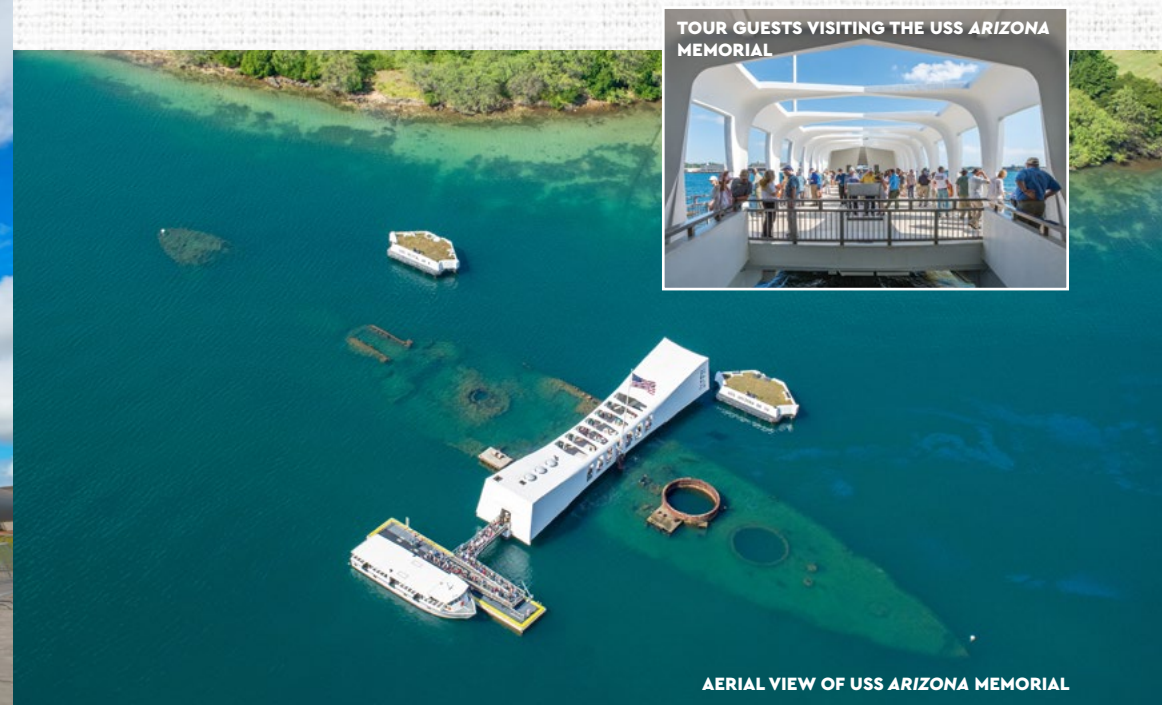
## MONDAY, DECEMBER 7, 2026

***“A date which will live in infamy...” - President Franklin D. Roosevelt***

The 85th Anniversary of Pearl Harbor Ceremony begins before sunrise in remembrance of the attacks. After the ceremony, visit the USS *Arizona* Memorial, which exploded during the Japanese onslaught, killing 1,177 officers and crew and sinking the ship. The *Arizona*’s hull is still submerged in the harbor with the memorial constructed above it. Visit the USS *Bowfin*, nicknamed the “Pearl Harbor Avenger,” a wartime submarine that completed nine patrols and sunk 43 Japanese ships. The Pacific Fleet Submarine Museum is also available for touring.

After an included group lunch, end the day at the National Memorial Cemetery of the Pacific. Also known as “Punchbowl” Cemetery, it is the resting place of American heroes such as Ernie Pyle, the Pulitzer Prize-winning war correspondent killed by enemy fire on Okinawa, and Medal of Honor Recipients Allan M. Ohata, Martin O. May, Barney F. Hajiro, and Senator Daniel K. Inouye. After a lecture by a Richard Frank, spend the rest of your evening at leisure.

**Accommodations: The Royal Hawaiian Hotel (B, L)**





## TUESDAY, DECEMBER 8, 2026

Today's touring includes former US Marine Corps Air Station Ewa, the first military installation targeted during the Japanese attack, as well as Schofield Barracks and the Tropic Lightning Museum, home of the 25th Infantry Division and the site where James Jones, author of *The Thin Red Line* and *From Here to Eternity*, was stationed on the morning of December 7, 1941.

Spend the afternoon at Wheeler Army Airfield, where American pilots had danced the night before the Japanese attacks, and Hickam Field, a prime Japanese target during the onslaught.

A reception and farewell dinner will take place on board the USS *Missouri*, the famous vessel where the Japanese signed surrender papers on September 2, 1945, finally putting an end to World War II. Special guest historian James Scott provides an after-dinner presentation.

**Accommodations:** The Royal Hawaiian Hotel (B, L, R, D)



## WEDNESDAY, DECEMBER 9, 2026

After breakfast, transfer from the Royal Hawaiian Hotel to Honolulu's Daniel K. Inouye International Airport (HNL) for independent flights home, or continue to **The Battle for Peleliu** post-tour.

(B)



SAILORS LAY WREATHS ON THE HEADSTONES OF COMRADES KILLED IN ACTION DURING THE JAPANESE ATTACK ON PEARL HARBOR



FROM OUR  
COLLECTION

## — ROY "SWEDE" BOREEN'S BULOVA WRISTWATCH

This 21-jewel Bulova wristwatch belonged to US Navy Storekeeper Second Class Roy "Swede" Boreen, who was aboard the USS *Oklahoma* in Pearl Harbor on the morning of the attack. At 7:55 a.m. on December 7, 1941, the call to battle stations sounded across the ship. Seconds later, the first of several torpedoes slammed into the *Oklahoma*. Boreen ran to his post in the pay office, closing watertight doors as explosions shook the vessel. A sudden blast ruptured a fuel tank, covering him in oil and forcing him to grope blindly through the compartments. He and several shipmates struggled to reach the upper decks, but when the main hatch sealed shut, Boreen found himself alone.

The *Oklahoma* took nine torpedo hits in less than 15 minutes and rolled over to 151 degrees. Amid the chaos, Boreen emerged onto the starboard side of the capsizing battleship. He watched as a massive bomb struck the USS *Arizona*, erupting in a fireball that consumed the ship and killed more than a thousand sailors. Realizing the *Oklahoma* was finished, Boreen leapt into the harbor and swam for the USS *Maryland*, moored nearby. The moment he hit the water—at 8:04 a.m.—his Bulova wristwatch stopped.

The waters around him were filled with debris, oil, and the bodies of shipmates. Boreen was just 21 years old, and of the eight men assigned to his office aboard the *Oklahoma*, he was the only survivor. That morning, he lost 443 shipmates. Climbing aboard the *Maryland*, exhausted and shaken, he was given clean clothes, a cup of black coffee, and the first cigarette of his life. Boreen was born in Minneapolis in 1920 and joined the Navy in 1937, following in the footsteps of his father who had served in the Swedish navy. By 1938, he had been assigned to the *Oklahoma*, where he spent three years and became known throughout the crew simply as "Swede." After surviving Pearl Harbor, he continued his naval career through World War II and later in Korea before retiring in 1959 after 21 years of active duty.

The Bulova wristwatch Boreen wore that morning is now preserved in the collection of The National WWII Museum in New Orleans. Though ordinary in appearance, it carries extraordinary meaning. Its frozen hands mark the exact moment a young sailor jumped into the harbor and survived one of the most devastating attacks in American history.



US Navy  
Storekeeper  
Second Class  
Roy "Swede"  
Boreen



Watch of Storekeeper Second Class Roy "Swede" Boreen. The National WWII Museum, 2011.037.001



**Scan QR code to hear Roy  
"Swede" Boreen's oral history  
from the Digital Collections of  
The National WWII Museum.**



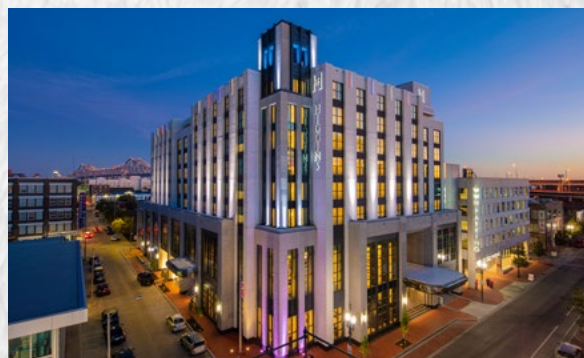
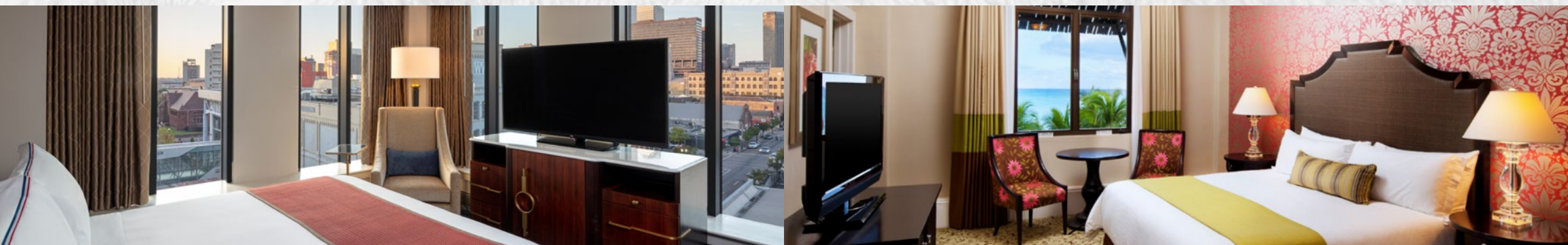
FROM OUR  
COLLECTION



## THE HIGGINS HOTEL & CONFERENCE CENTER

Prominently located on The National WWII Museum's campus in the heart of New Orleans's Arts and Warehouse District, The Higgins Hotel & Conference Center features a striking 1940s theme and is part of the exclusive Curio Collection by Hilton. Its name reflects the contributions of the extraordinary entrepreneur Andrew Higgins, who designed and built over 20,000 landing craft in New Orleans that were used in every major amphibious assault of World War II.

This 4-star hotel offers spacious and well-appointed accommodations, featuring 230 era-inspired guest rooms and suites, exceptional dining, and a state-of-the-art conference center that is home to the Museum's many conferences, symposia, military reunions, student group visits, and student and teacher residential programs.



## THE ROYAL HAWAIIAN HOTEL

Opened in 1927 and known as the "Pink Palace of the Pacific," the Royal Hawaiian, a Luxury Collection Resort, Waikiki, is an oasis of timeless luxury on the island of O'ahu, Hawaii. Modern yet indigenous, the resort on Waikiki Beach offers unprecedented amenities, refined accommodations, and exclusive services—all designed to provide guests with a 5-star luxury experience while visiting Waikiki. From exquisite accommodations in the landmark Historic Wing and the magnificent Mailani Tower to world-class dining, the 528-room Honolulu luxury hotel embodies the allure of Hawaii's inimitable spirit and rich culture.



## EXTEND YOUR JOURNEY

### *Post-Tour*



# THE BATTLE FOR PELELIU

POST-TOUR FEATURING JAMES M. SCOTT

DECEMBER 9-17, 2026

**\$6,350 PER PERSON DOUBLE OCCUPANCY | \$6,999 SINGLE OCCUPANCY**  
\$299 taxes and fees are additional. Flights not included.



Peleliu is a small island in the Palau archipelago located some 500 miles east of the Philippines. The “crab claw”-shaped island extends largely from south to north and is roughly seven square miles. History has argued that “the fight for Peleliu was one of the most vicious and stubbornly defended battles of the war.” Today, the island is a lush tropical landscape, with remnants of the battle waiting to be discovered by the few travelers who reach the island per year.

**We are offering a special expanded eight-night itinerary exclusively for 85th Anniversary of Pearl Harbor travelers.**

### ITINERARY SUMMARY

Journey from Honolulu to Guam, crossing the International Date Line. During two full days on Guam, tour key sites like Agat Beach, site of fierce amphibious landings during the 1944 liberation of Guam; the T. Stell Newman Visitor's Center & Museum; Asan Bay Overlook offering strategic viewpoints; and the Piti Guns, which are preserved coastal defense sites. Also discover Guam's indigenous Chamorro heritage at the Valley of the Latte experience. Enjoy luxury accommodations at Dusit Thani Guam.

Take a midnight flight to Palau, and settle in at Palau Pacific Resort. The itinerary includes three full days to explore Peleliu with expert perspectives on this brutal battle of the Pacific war from featured tour historian James M. Scott. Visit the Peleliu World War II Memorial Museum, and see the beaches where US Marines landed on September 15, 1944. Learn about the caverns and caves used as Japanese defensive positions as you explore “Bloody Nose Ridge.” With opportunities for excursions to stunning islands throughout the area and an optional scuba excursion to submerged wrecks, there is no other tour like this offered by anyone else.

This itinerary has become a favorite destination of Museum staff and tour guests alike. As one past traveler noted, “Palau offered the nicest hotel, and Peleliu was the most interesting site that we could never have done on our own.” Said another: “The entire tour was great, but the best part for me was the Peleliu extension—the two days on Peleliu itself (seeing the relics, caves, and beaches; walking the battlefield trail; and the BBQ lunches) and then last day of snorkeling in the Rock Islands.”

Join the few who have made the pilgrimage to Peleliu in the 82-plus years since the battle.



## WORLD WAR II IN THE PHILIPPINES

Featuring James M. Scott

MANILA • CLARK • CORREGIDOR ISLAND • BATAAN • LEYTE

14 days | Starting at \$9,299  
February 13-25, 2027

Optional Three-Night Post-Tour:  
*Palawan*

## THE PACIFIC CAMPAIGN: GUAM, SAIPAN, AND TINIAN

Featuring James M. Scott and Jonathan Parshall

10 days | Starting at \$15,999  
March 13-21, 2026

Optional Four-Night Pre-Tour Extension:  
*The Battle for Peleliu*

Optional Five-Night Post-Tour Extension:  
*Target Tokyo*



Tour group at Malinta Tunnel on Corregidor



Aslito Airfield, Saipan

## JAPAN AND OKINAWA

Featuring Jonathan Parshall

TOKYO • HIROSHIMA • KAGOSHIMA • OKINAWA

11 days | Starting at \$10,499  
May 13-23, 2026



Hiroshima Atomic Bomb Dome



To book your trip, contact the Travel Team Monday - Friday, 9:00 a.m. - 5:00 p.m. CT  
Office: 504-528-1944 x 257 | Email: [travel@nationalww2museum.org](mailto:travel@nationalww2museum.org) | Website: [ww2museumtours.org](http://ww2museumtours.org)

## TRAVEL WEBINAR:

### 85TH ANNIVERSARY OF PEARL HARBOR TOUR with Jonathan Parshall

December 4, 2025 | 12:00 P.M. - 1:00 P.M. CT

Join The National WWII Museum's Educational Travel Team and expert historian Jonathan Parshall to learn about this all-new journey to commemorate the lives lost on America's day of infamy.



**Almost ready to book?!**  
Learn more about this tour by  
registering for the webinar.





# 85TH ANNIVERSARY OF PEARL HARBOR

NOVEMBER 30 - DECEMBER 9, 2026



BOOK YOUR JOURNEY INTO HISTORY TODAY

Two ways to secure your spot:

1. Call one of our travel specialists at 1-877-813-3329 X 257 or email us at [travel@nationalww2museum.org](mailto:travel@nationalww2museum.org).
2. Scan the QR code below with the camera on your smartphone and follow the instructions online to make your reservation.



**BOOK NOW!** Prices quoted are based on fares in effect at the time of printing and are subject to change at any time.



The National WWII Museum  
945 Magazine Street  
New Orleans, LA 70130

NONPROFIT  
AUTO  
US POSTAGE  
PAID  
NEW ORLEANS, LA  
PERMIT NO. 2748

BOOK BY JANUARY 30, 2026, TO SAVE  
\$1,000 PER PERSON