

VICTORY IN EUROPE: THE END OF THE WAR ON THE ELBE



80TH ANNIVERSARY ELBE RIVER CRUISE COLLECTION
ABOARD VIKING BEYLA

MAY
1-8, 2025

PRAGUE TO BERLIN
WITH ALEXANDRA RICHIE, DPHIL,
AND MICHAEL NEIBERG, PHD

MAY
6-13, 2025

BERLIN TO PRAGUE
WITH KEITH LOWE AND
MARK CALHOUN, PHD

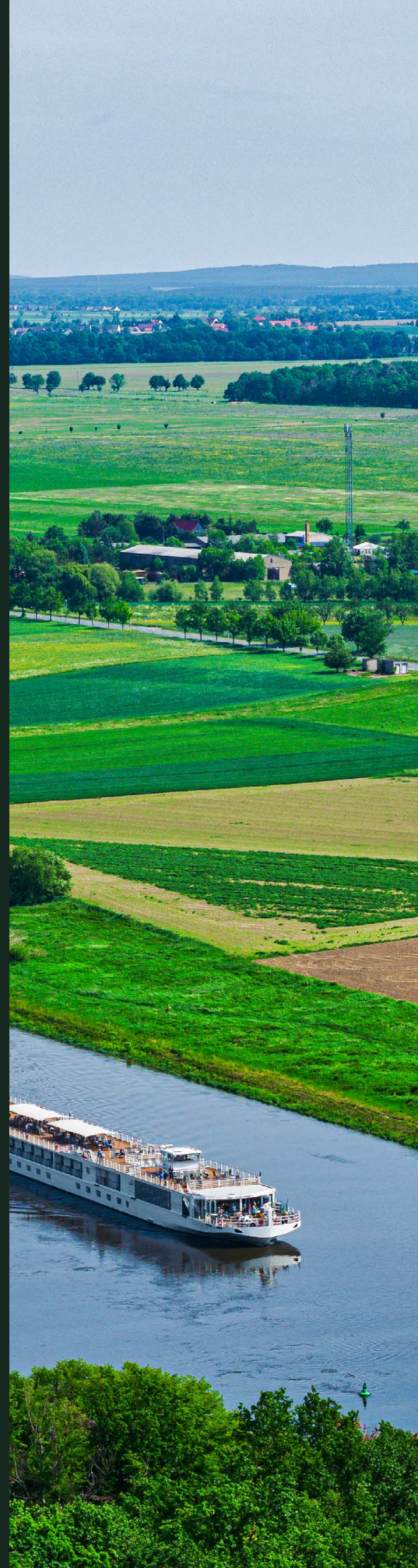


CONTENTS

- 04 — Itineraries At a Glance
- 06 — Featured Tour Authors and Historians
- 08 — The Elbe River
- 10 — Ports of Call
- 20 — Optional Tour Extensions
- 24 — Viking Beyla Ship and Pricing
- 26 — About The National WWII Museum Educational Travel Programs and the Jenny Craig Institute for the Study of War and Democracy
- 28 — Tour Inclusions
- 30 — Additional Tours



Getty Images



Dear World Traveler,

On April 12, 1945, Generals Eisenhower, Bradley, and Patton inspected a recently liberated concentration camp. The scene was shocking; Eisenhower, realizing the significance of this discovery, forced himself to examine every corner of the camp. Anticipating that future generations might doubt such an atrocity could have happened, he decided that it must be documented and ordered every nearby unit that was not on the front lines to tour any similar camp in the American sector, saying:

“We are told the American soldier does not know what he is fighting for. Now, at least, he will know what he is fighting against.”

The war in Europe would come to an end about a month later, on May 8, 1945. As we approach the 80th anniversary of V-E Day, The National WWII Museum has created a rich and impactful Elbe River cruise itinerary to honor General Eisenhower’s sentiment to never forget what happened during World War II. The Elbe River, one of the most storied waterways in military history, presents the perfect backdrop for exploring the famous linkup of Soviet and American troops—an important step toward ending the war in Europe and one that offers key insights into the beginnings of the Cold War.

Victory in Europe: The End of the War on the Elbe is a voyage aboard *Viking Beyla* that delves into some fascinating aspects of the war that are seldom explored by Americans. After years of hard-won battles against the *Wehrmacht*, the Soviets—advancing from the east—and the Americans—advancing from the west—met in the middle near the German town of Torgau on the Elbe River. With Germany effectively divided in half, the Allied forces of the East and the West celebrated and posed for several photos, shaking hands as comrades-in-arms against the Nazis.

With two itineraries to choose from—Prague to Berlin, or Berlin to Prague—guests can craft their unique adventure with a selection of pre- and post-tour options coupled with custom-curated stops along the river and first-class, expertly guided tours. Each daily excursion examines the legacies of victory and the fight for freedom that hold lasting impacts even today.

To provide additional historical context during this one-of-a-kind journey, we have hand-selected a few of the world’s leading scholars to join the cruises, including Dr. Alexandra Richie, Dr. Michael Neiberg, and Keith Lowe. They will be joined by the Museum’s own Dr. Mark Calhoun, the Senior Historian of the Jenny Craig Institute for the Study of War and Democracy. I invite you to join **Victory in Europe: The End of the War on the Elbe** for what is sure to be a memorable experience commemorating the 80th anniversary of V-E Day.

Sincerely,

Stephen J. Watson
President & CEO
The National WWII Museum



ITINERARIES AT A GLANCE



PRAGUE TO BERLIN | MAY 1-8, 2025

Optional Operation Anthropoid two-night pre-tour in Prague with Alexandra Richie, DPhil
April 29-May 1, 2025

May 1, 2025 - Arrive in Prague (PRG) / Welcome Reception and Lecture / Dinner on own
Accommodations: Hotel Paris Prague (R)

May 2, 2025 - Theresienstadt / Lidice Memorial / Panenské Břežany Castle and Memorial of the National Oppression and Resistance / Embark Viking Beyla
Accommodations: Viking Beyla (B, L, D)

May 3, 2025 - Morning Lecture while sailing / Dock in Bad Schandau / Tour Königstein Castle or Pirna
Accommodations: Viking Beyla (B, L, D)

May 4, 2025 - Dock in Dresden / Walking tour of Dresden / Slaughterhouse Five / Lunch on own / Museum of Military History
Accommodations: Viking Beyla (B, D)

May 5, 2025 - Dock in Torgau / Walking tour of Meissen / Lunch on own / Tour of Torgau / Included Lecture and Dinner in Torgau
Accommodations: Viking Beyla (B, D)

May 6, 2025 - Dock in Wittenberg / Walking tour of Wittenberg / Lunch on board / Afternoon at leisure sailing to Magdeburg
Accommodations: Viking Beyla (B, L, D)

May 7, 2025 - Disembark in Magdeburg / Walking tour of Magdeburg / Drive to Berlin for Farewell Reception and Dinner
Accommodations: Berlin Rocco Forte Hotel de Rome (R, D)

May 8, 2025 - Depart from Berlin (BER) or continue on post-tour program

Optional From the Rubble: Berlin in World War II and the Cold War three-night post-tour with Alexandra Richie, DPhil, and Michael Neiberg, PhD
May 8-11, 2025

BERLIN TO PRAGUE | MAY 6-13, 2025

Optional Berlin Divided two-night pre-tour with Keith Lowe
May 4-6, 2025

May 6, 2025 - Arrive in Berlin (BER) / Welcome Reception and Lecture / Dinner on own
Accommodations: Berlin Rocco Forte Hotel de Rome (R)

May 7, 2025 - Transfer to Magdeburg / Tour of Magdeburg / Lunch on own / Embark Viking Beyla
Accommodations: Viking Beyla (B, D)

May 8, 2025 - Dock in Wittenberg / Walking tour of Wittenberg / Lunch on own / Tour of Torgau / Included Lecture and Dinner in Torgau
Accommodations: Viking Beyla (B, D)

May 9, 2025 - Dock in Torgau / Morning at leisure while sailing / Walking tour of Meissen / Evening Lecture on board
Accommodations: Viking Beyla (B, L, D)

May 10, 2025 - Dock in Dresden / Walking tour of Dresden / Slaughterhouse Five / Lunch on own / Museum of Military History
Accommodations: Viking Beyla (B, D)

May 11, 2025 - Morning Lecture while sailing / Dock Bad Schandau / Tour Königstein Castle or Pirna
Accommodations: Viking Beyla (B, L, D)

May 12, 2025 - Disembark Viking Beyla / Theresienstadt / Lidice Memorial / Panenské Břežany Castle and Memorial of the National Oppression and Resistance
Accommodations: Hotel Paris Prague (B, L, D)

May 13, 2025 - Depart from Prague (PRG) or continue on post-tour program

Optional Operation Anthropoid two-night post-tour in Prague with Mark Calhoun, PhD
May 13-15, 2025

- Port of Call
- ★ Optional Tour Extensions Available



MEET THE TOUR

FEATURED AUTHORS AND HISTORIANS

PRAGUE TO BERLIN | MAY 1-8, 2025

ALEXANDRA RICHIE, DPHIL

Alexandra Richie is a historian of Germany and Central and Eastern Europe, with a specialization in defense and security issues. She completed her BA (Hons) in political science at the University of Victoria and went on to study at St. Antony's College, Oxford, where she wrote her doctoral thesis, "The Political Manipulation of History in East and West Germany." Richie is also the author of *Faust's Metropolis: A History of Berlin* (1999), which was named one of the top 10 books of the year by *American Publisher's Weekly*, and *Warsaw 1944* (2009), which won the Newsweek Teresa Torańska Prize for best nonfiction book of 2014 and the Kazimierz Moczarski Prize for Best History Book 2015. She has contributed to many articles, documentaries, radio, and television programs, and is a past Convener of the Presidential Counselors at The National WWII Museum. She is also a member of the Senate at the Collegium Civitas University in Warsaw, Poland, and serves as the Władysław Bartoszewski co-chair of History and International Studies at the Collegium Civitas. Richie has been a featured historian with the Museum's Educational Travel Program since 2017.



PRAGUE TO BERLIN | MAY 1-8, 2025

MICHAEL NEIBERG, PHD

Michael Neiberg is the Chair of War Studies in the Department of National Security and Strategy and a professor of history at the US Army War College. His published work focuses on World War I and World War II in global context. *The Wall Street Journal* named his *Dance of the Furies: Europe and the Outbreak of World War I* one of the five best books ever written about that war. He is also the author of *The Blood of Free Men: The Liberation of Paris, 1944* and *Potsdam: The End of World War II and the Remaking of Europe*, both published by Basic Books. Oxford University Press published his *Path to War: How the First World War Created Modern America* in October 2016 and his *Concise History of the Treaty of Versailles* in July 2017. He is now at work on a history of US involvement in the Middle East from 1942 to 1950.



BERLIN TO PRAGUE | MAY 6-13, 2025

KEITH LOWE

Keith Lowe is the author of several major works of history. His first book, *Inferno*, was a critically acclaimed study of the 1943 bombing of Hamburg. His second book, *Savage Continent*, became a *Sunday Times* top 10 best-seller and went on to win both the Hessel-Tiltman Prize for History and Italy's national Cherasco History Prize. It is now a standard work on the wave of violence and revenge that swept Europe after the war. His 2017 book *The Fear and the Freedom* is an intimate history of the long-term consequences of World War II and the shadow that it still casts over our lives today. It was shortlisted for the Historical Writers' Association Non-fiction Crown and has been adapted as a 12-part radio series in the Czech Republic. His latest book, *Prisoners of History*, examines our monuments to the war and asks what they are really saying about our history and ourselves. Written at a time when statues around the world were being torn down by both governments and protesters, it is a timely look at some of the world's most important symbols of our collective past. Lowe regularly speaks on TV and radio, and he often lectures on postwar history at venues across Europe and North America. He has written for a variety of newspapers and journals, including *The Daily Telegraph*, *The Times*, *The Wall Street Journal*, *El Pais*, and the *Neue Zürcher Zeitung*. He lives in London with his wife and two children.

BERLIN TO PRAGUE | MAY 6-13, 2025

MARK CALHOUN, PHD

Mark Calhoun is Senior Historian at The National WWII Museum's Jenny Craig Institute for the Study of War and Democracy. Calhoun earned his PhD in history from the University of Kansas in 2012 and is the author of *General Lesley J. McNair: Unsung Architect of the U.S. Army* (University Press of Kansas, 2015), the first comprehensive military biography of McNair. The book reveals previously unpublished details of McNair's 40-year career and assesses the impact of McNair's views and actions on America's mobilization for and involvement in World War II. Calhoun's current research interests center on General William H. Simpson, commander of the Ninth US Army, and the Ninth Army's operations during the campaign in Northwest Europe from 1944-45. A career US Army CH-47 Chinook helicopter pilot and war planner, Calhoun retired as a Lieutenant Colonel in 2008, after which he served for 14 years as an associate professor of the US Army School of Advanced Military Studies at Fort Leavenworth.





BRINGING HISTORY TO LIFE

THE ELBE RIVER

Today, the Elbe River is one of the major waterways of Central Europe, originating in the Czech Republic and running through Austria, Poland, and Germany to the North Sea. In 1945, the Elbe was the site of the monumental link-up between the Western Allies and the Red Army. Near the end of the war, American forces were ordered to halt at the Elbe, allowing the Soviets to attack and seize Berlin, and the Elbe became part of the border between East Germany and West Germany.

A staged moment occurred on the wrecked bridge over the Elbe River at Torgau, showing the first meeting between American and Soviet soldiers as they reach out to shake hands.



THERESIENSTADT
CONCENTRATION
CAMP



FEATURED HISTORIAN
ALEXANDRA RICHIE AT
THERESIENSTADT

PORTS OF CALL

THERESIENSTADT AND LIDICE

Through guided tours and poignant memorial sites, our stop in Theresienstadt offers a profound and sobering exploration of wartime experiences, honoring the memory of those who suffered and perished under Nazi tyranny.

- Explore the tragic legacy of the **Theresienstadt concentration camp**, where over 140,000 Jewish prisoners were confined under brutal conditions by the Nazi regime. Learn of the profound moment of liberation as Soviet forces stormed the gates of Theresienstadt, bringing an end to the suffering of its inhabitants.
- Visit the **Gestapo prison** where countless lives were lost to torture and persecution.
- Hear the stories of the victims of the **Leitmeritz** (in present-day Litoměřice) forced labor camp, where the inhabitants endured unimaginable hardships in the service of the Nazi war machine.
- Pay respects at the **Lidice Memorial**, a solemn tribute to the village of Lidice, which was brutally destroyed by the Nazis in reprisal for the assassination of Reinhard Heydrich.



PORTS OF CALL

BAD SCHANDAU

Dock near the Czech Republic border, and travel to one of the largest hilltop fortifications in Europe or explore Sonnenstein, a facility that once operated as a large mental hospital turned Nazi killing center under the T4 Program.

- **The Königstein Castle** has been declared impregnable at several times throughout its history. Saxon kings would retreat to this fortress in times of war or instability. During World War II, the fortress served as a prison (Oflag IV-B)—first for Polish prisoners of war and later for British, French, and other Allied officers. In April 1942, French General Henri Giraud escaped the prison by lowering himself down the outer walls and jumping onto a train headed to France. He then traveled to North Africa via a British submarine, where he worked with the Allies and took part in the Casablanca Conference. On May 9, 1945, the castle was liberated by the Red Army. Two days later, on May 11, 1945, French generals held at the castle were rescued by the US Army, further highlighting the multinational efforts to secure the release of prisoners. In the postwar period, Königstein Castle served as a Red Army military hospital, reflecting the shifting dynamics and aftermath of the war as it transitioned from a site of confinement to one of medical care and recovery.
- Explore the T4 center **Sonnenstein**, situated near Pirna, which once operated as a large mental hospital turned Nazi killing center under *Aktion T4*, or the T4 Program, a mass euthanasia program implemented by the Third Reich. The intent of the operation was to systematically eliminate individuals deemed “unfit” or “life unworthy of life” according to Nazi eugenic principles, including those with physical and mental disabilities, psychiatric disorders, and hereditary illnesses. Today, the center has been transformed into a museum and memorial, offering poignant insights into the evolution of the T4 Program and its sinister influence on the Holocaust. Through exhibits and documentation, gain a deeper understanding of the atrocities committed during this dark chapter of history, reflecting on the human cost of Nazi ideology and the importance of preserving the memory of the victims.



VIEW OF
DRESDEN FROM
THE ELBE RIVER



Bombardment of Dresden, 14-15 February 1945.
The damaged Martin Luther memorial after the
bombardment. Photo (Chomsor), February 1945. Alamy.

PORTS OF CALL

DRESDEN

Dresden was considered one of the most important centers of modern art and dance in early 20th-century Germany. The Allies targeted Dresden in February 1945, almost completely destroying its architecture, paintings, theaters, and museums. During the attack, American soldier and prisoner of war Kurt Vonnegut survived by securing himself in an underground meat locker. The experience became the inspiration for his acclaimed work *Slaughterhouse-Five*, published in 1969.

Dresden endured devastating destruction brought about by Allied bombing. The evolution of precision bombing during World War II underwent a complex trajectory, marked by significant advancements as well as challenges and uncertainties in targeting. Initially, efforts were made to achieve precision bombing to minimize civilian casualties and maximize the destruction of strategic targets. As the war progressed, however, the realities of combat often necessitated compromises: Operations Clarion and Thunderclap, conducted by the US Army Air Forces, epitomized this shift, with large-scale bombing campaigns targeting German cities and infrastructure. While these operations aimed to disrupt German war production and morale, the indiscriminate nature of area bombing inevitably resulted in civilian casualties and widespread destruction. The vagaries of targeting posed ethical dilemmas for Allied commanders, who grappled with balancing military objectives with humanitarian concerns. Despite technological advancements in precision bombing, the exigencies of war often dictated a more pragmatic approach, underscoring the complex realities of aerial warfare during the war.

During a walking tour of Dresden, see scars from the war that still remain today and explore the Bundeswehr Museum of Military History.

TOUR GROUP
IN MEISSEN



AERIAL VIEW
OF TORGAU



PORTS OF CALL

MEISSEN AND TORGAU

A strategic location along the Elbe River, **Meissen** became a target for Allied bombing raids aimed at disrupting German war production and infrastructure. The city's historic landmarks, including the iconic Meissen Cathedral and the world-renowned Meissen porcelain factory, were not spared from the devastation of aerial bombardment. Civilians faced the daily challenges of wartime life, including shortages of food, fuel, and basic necessities. Despite the turmoil, the resilience of the people of Meissen persevered, and the city eventually emerged from the war with a determination to rebuild and restore its cultural heritage.

Torgau is the location of the monumental meeting on the Elbe between American and Soviet forces on April 25, 1945. Tour both sides of the river: the western side where the American advance was ordered to halt by General Eisenhower, and the eastern side where the Soviets stopped. At the time of the meeting, plans were already underway to split Germany into occupation zones, and the Red Army was attacking Berlin. During the Cold War, the river would form a portion of the boundary between East Germany and West Germany. Visit the American monument erected in 1985, marking the 40th anniversary of the meeting and handshake. The linkup on the Elbe at Torgau remains a poignant symbol of cooperation and victory in the face of tyranny, and the monument serves as a reminder of the sacrifices made by soldiers from both sides to secure peace and freedom.



Terek Cossack Hat

The Soviet Union was composed of many diverse ethnic groups, and the traditional military forces of these groups were incorporated into the Red Army. Cossack cavalymen from the Russian Steppes region were one such group. This hat, based on a traditional Cossack design, was given to Lieutenant George Taulbee Sr. of the 83rd Armored Field Artillery Battalion when he met Soviet forces on the Elbe River in 1945. *Gift in memory of George Taulbee, Sr. 2004.185.012*



THE MARTIN LUTHER
MEMORIAL ON THE
MARKET SQUARE IN
WITTENBERG

PORTS OF CALL

WITTENBERG

Wittenberg, famous for Martin Luther's *Ninety-five Theses*, was spared destruction by the Allies in World War II. American GIs of the Ninth US Army occupied Wittenberg on April 25, 1945, and attempted to restore order, but they were obliged to leave the area in July so that the Red Army could take its sector as agreed to by the stipulations of the 1944 London Protocol.

During a walking tour, notice the **stumbling stones**—small brass plaques embedded in the city's sidewalks to honor the memory of Jewish residents who were persecuted and murdered during the Holocaust.

- See the Wittenberg **Schlosskirche** (town church), which bears a controversial relic known as the *Judensau*, a medieval sculpture depicting derogatory imagery of Jews. While some view it as a historical artifact, others see it as a painful reminder of antisemitic sentiments ingrained in European history.

PORTS OF CALL

MAGDEBURG

Magdeburg was an important prewar city for the Nazi party. In March 1933, the Nazis occupied the town hall to humiliate the mayor Ernst Reuter, an enemy of the Nazi party and mayor of the city from 1931–33.

- Stand on **Domplatz**, where the echoes of the infamous Nazi book burnings resonate through the ages. Learn about this chilling event, which took place in May 1933 and symbolized the suppression of free speech and intellectual freedom under the Nazi regime.

On April 12, 1945, elements of the Ninth US Army crossed the Elbe River and approached Magdeburg. When the German occupiers refused to surrender, General William H. Simpson ordered the city bombed. The Royal Air Force complied on the night of April 16, 1945, destroying much of the city center and allowing the Ninth Army to take the city two days later. The Americans turned the city over to the Red Army on July 1, 1945, consistent with the agreed-upon Allied zones of occupation.

- Visit the powerful **Ernst Barlach Monument**, a solemn reminder of the horrors of war and the human cost of conflict. Created by renowned German sculptor Ernst Barlach, the monument depicts a grieving mother holding her deceased son, evoking themes of grief, loss, and the futility of war. Erected in 1953, the monument serves as a poignant reminder of the devastating consequences of conflict and the need for peace and reconciliation.
- Learn of the 30 forced labor detachments of the **Stalag XI-A prisoner-of-war camp**, where over 4,500 Allied POWs toiled under brutal conditions. Tragically, in April 1945, the city became a scene of unspeakable violence as dozens of prisoners were massacred by the *Volkssturm* and Hitler Youth. Survivors endured forced marches to the Ravensbrück and Sachsenhausen concentration camps.



AERIAL VIEW OF
MAGDEBURG



OPTIONAL TOUR EXTENSIONS IN PRAGUE

OPERATION ANTHROPOID

TWO-NIGHT PRE-TOUR* IN PRAGUE WITH ALEXANDRA RICHIE, DPHIL APRIL 29 - MAY 1, 2025

Day 1: Arrive in Prague (PRG) / Welcome Reception and Lecture at Hotel Paris Prague
Accommodations: *Hotel Paris Prague (R)*

Day 2: Old Town / Jewish Quarter / Old Jewish Cemetery / Pinkas Synagogue / Lunch on own / Sts. Cyril and Methodius Cathedral and Crypt / Dinner on own
Accommodations: *Hotel Paris Prague (B)*

Day 3: Strahov Monastery / Included lunch / Prague Castle / Join Prague to Berlin main tour this evening
Accommodations: *Hotel Paris Prague (B, L)*

PRICING:

\$2,150 per person based on double occupancy / \$2,899 single occupancy
Taxes and fees are \$199 additional

*Available only for cruise participants on the Prague to Berlin itinerary

TWO-NIGHT POST-TOUR* IN PRAGUE WITH MARK CALHOUN, PHD MAY 13-15, 2025

Day 1: Old Town / Jewish Quarter / Old Jewish Cemetery / Pinkas Synagogue / Lunch on own / Sts. Cyril and Methodius Cathedral and Crypt / Dinner on own
Accommodations: *Hotel Paris Prague (B)*

Day 2: Strahov Monastery / Prague Castle / Free afternoon / Farewell Reception and Lecture
Accommodations: *Hotel Paris Prague (B, R)*

Day 3: Depart from Václav Havel Airport Prague (PRG) for flights home
(B)

PRICING:

\$2,150 per person based on double occupancy / \$2,899 single occupancy
Taxes and fees are \$199 additional

*Available only for cruise participants on the Berlin to Prague itinerary



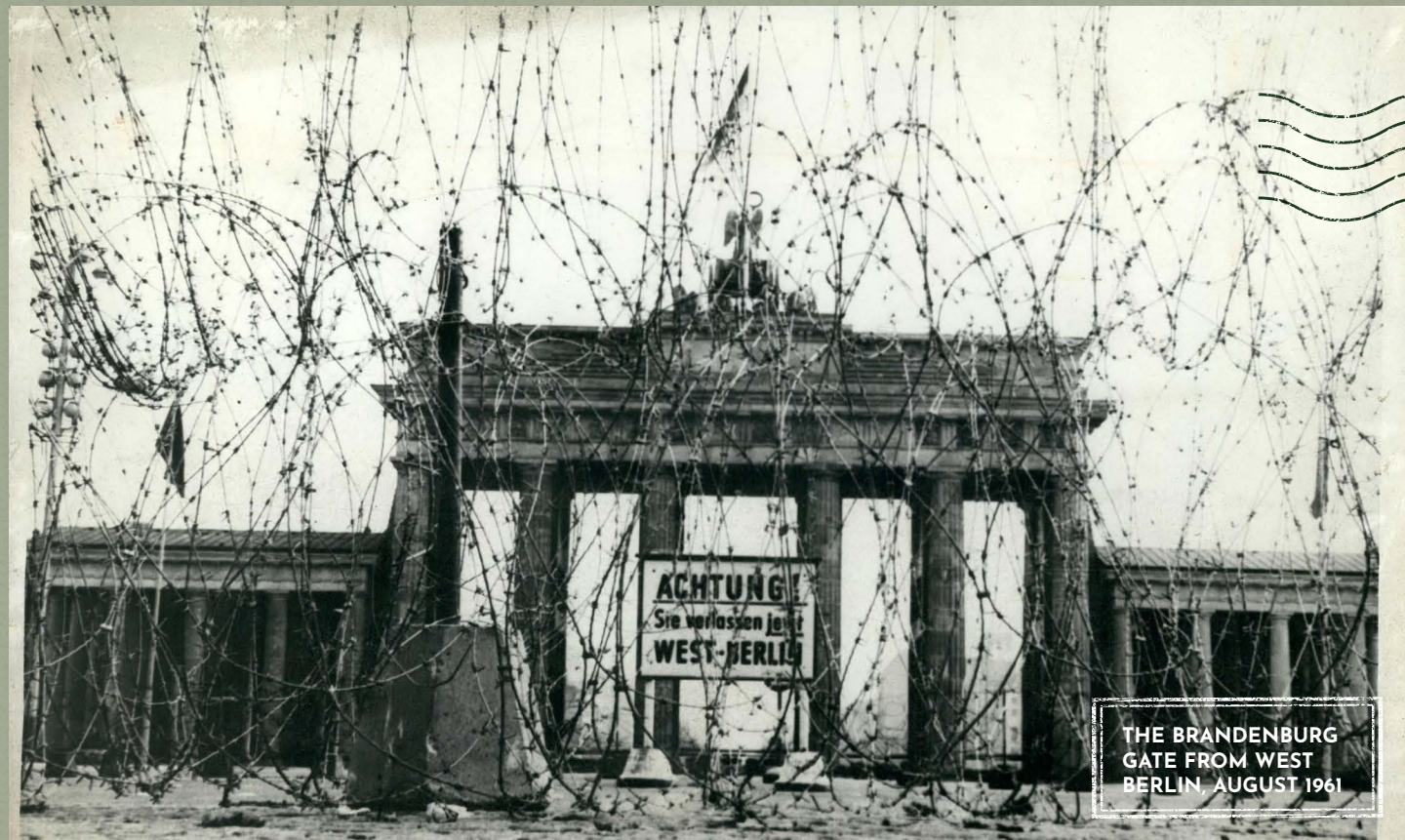
HOTEL PARIS PRAGUE

This hotel boasts a rich history dating back to its opening in 1904. Designed by renowned Czech architect Jan Vejrych in the art nouveau style, the hotel quickly became a symbol of luxury and elegance in the city. Throughout its history, the Hotel Paris has welcomed a diverse array of guests, including royalty, celebrities, and dignitaries, drawn to its opulent interiors and impeccable service. During the early 20th century, the hotel played a significant role in Prague's cultural and social scene, hosting lavish parties and events that attracted the city's elite. While under German control during World War II, the hotel was requisitioned for various purposes, serving as a headquarters for Nazi officers and officials.

Amenities include free Wi-Fi, flatscreen TV, minibar, air conditioning, heated bathroom floors, sauna, spa, gym, and two restaurants.

Click the QR code for more information.





Keystone Press / Alamy Stock Photo.

OPTIONAL TOUR EXTENSIONS IN BERLIN

BERLIN DIVIDED

TWO-NIGHT PRE-TOUR WITH KEITH LOWE | MAY 4-6, 2025

Day 1: Arrive in Berlin (BER) / Welcome Reception / Dinner on own
Accommodations: Berlin Rocco Forte Hotel de Rome (R)

Day 2: Museum Berlin-Karlshorst / Reichstag with included lunch / DDR Museum
Accommodations: Berlin Rocco Forte Hotel de Rome (B, L)

Day 3: Checkpoint Charlie / Berlin Wall / East Side Gallery / Allied Museum / Join Berlin to Prague main tour this evening
Accommodations: Berlin Rocco Forte Hotel de Rome (B)

PRICING:

\$2,150 per person based on double occupancy / \$2,899 single occupancy
 Taxes and fees are \$199 additional

*Available only for cruise participants on the Berlin to Prague itinerary

OPTIONAL TOUR EXTENSIONS IN BERLIN

FROM THE RUBBLE: BERLIN IN WORLD WAR II AND THE COLD WAR

THREE-NIGHT POST-TOUR WITH ALEXANDRA RICHIE, DPHIL, AND MICHAEL NEIBERG, PHD | MAY 8-11, 2025

Day 1: Arrive to Berlin Rocco Forte Hotel de Rome / Welcome reception & lecture
Accommodations: Berlin Rocco Forte Hotel de Rome (R)

Day 2: Sachsenhausen Concentration Camp / Lunch at the Reichstag / Bunker Story Museum
Accommodations: Berlin Rocco Forte Hotel de Rome (B, L)

Day 3: Potsdam / Included lunch / Karlshorst Museum / Farewell reception
Accommodations: Berlin Rocco Forte Hotel de Rome (B, L, R)

Day 4: Individual transfers to Berlin Brandenburg Airport (BER) for flights home. (B)

PRICING:

\$3,250 per person based on double occupancy / \$3,950 single occupancy
 Taxes and fees are \$199 additional

*Available only for cruise participants on the Prague to Berlin itinerary



ROCCO FORTE HOTEL DE ROME

During World War II, the hotel was requisitioned by the Nazi government and used for various purposes, including accommodating Nazi officials and serving as a hub for propaganda efforts. Berlin itself endured heavy bombing during the war, and the hotel likely sustained damage during these attacks.

After the war, Berlin was divided into East and West, and the Hotel de Rome found itself in the Soviet-occupied sector. It continued to operate under Soviet control until the reunification of Germany in 1990. In 2006, after extensive renovations, the hotel reopened as the Rocco Forte Hotel de Rome Berlin, part of the luxury Rocco Forte Hotels group. Today, it stands as a symbol of Berlin's resilience and transformation, offering luxury accommodation in the heart of the city while preserving elements of its rich history.

Guestrooms have high stucco ceilings, marble bathrooms with separate tubs and showers, and free Wi-Fi. There is a chic Italian restaurant and rooftop terrace bar for cocktails and snacks.

Click the QR code for more information.





ADVENTURE AWAITS ON THE **VIKING BEYLA**

Viking Longships® feature state-of-the art engineering, deluxe accommodations and streamlined Scandinavian interiors. Their customized hulls and engines are specially built to navigate the historic Elbe River.

SHIP FEATURES:

- Sun Deck with shaded sitting area & organic herb garden
- Aquavit Terrace, a revolutionary outdoor viewing area at the bow of the ship for alfresco dining
- Lounge and bar with floor-to-ceiling glass doors
- Restaurant with panoramic views
- Library and onboard shop
- Free Wi-Fi (connection speed may vary)
- Laundry service
- Flatscreen TV with infotainment system featuring a selection of live TV channels, complimentary movies on-demand and in-house programming



CLICK THE QR CODE

To view a 360 ° tour of the *Viking Beyla* Ship

STATEROOMS

Our purpose-built ships offer a wide variety of staterooms for your selection. From Veranda Staterooms to the abundance of extra perks and amenities in our spacious Explorer Suites, there is no finer way to travel. And whichever stateroom you choose, you will find it beautifully designed in the understated elegance for which Viking is known.



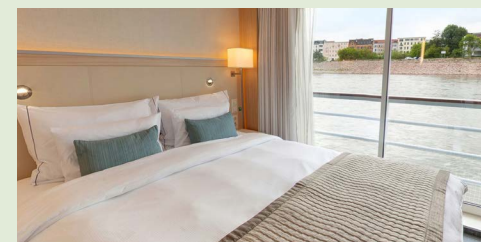
VERANDA SUITE

- 250 sq ft (includes private veranda)
- River-view suite with full-size veranda off a spacious, separate sitting room, and French Balcony (floor-to-ceiling sliding glass door) in sleeping quarters
- Queen-size Viking Explorer Bed (optional twin-bed configuration) with luxury linens & pillows



VERANDA STATEROOM

- 180 sq ft (includes private veranda)
- River-view stateroom with floor-to-ceiling sliding glass door opening to full-size veranda
- Queen-size Viking Explorer Bed (optional twin-bed configuration) with luxury linens & pillows



FRENCH BALCONY STATEROOM

- 122 sq ft
- River-view stateroom with French balcony (floor-to-ceiling sliding glass door)
- Queen-size Viking Explorer Bed (optional twin-bed configuration) with luxury linens & pillows



STANDARD STATEROOM

- 140 sq ft
- River-view stateroom with half-height picture window
- Queen-size Viking Explorer Bed (optional twin-bed configuration) with luxury linens & pillows

PRICING

PRICING (PER PERSON BASED ON DOUBLE OCCUPANCY)

Veranda Suite (No single accommodation available)
 Veranda Stateroom (No single accommodation available)
 French Balcony Stateroom
 Standard Stateroom
 French Balcony Single
 Standard Stateroom Single

AVAILABILITY

2 available
 19 available
 12 available
 5 available
 2 available
 5 available

EARLY BOOKING

\$15,999
 \$13,999
 \$12,599
 \$9,599
 \$11,799
 \$10,999

REGULAR

\$16,999
 \$14,999
 \$13,599
 \$10,599
 \$11,799
 \$10,999

BOOK BY JULY 31, 2024

Taxes and portfees are \$399 additional per person

Single occupancy accommodations are extremely limited. If you are a solo traveler, call the Travel Team to explore options.



ABOUT THE NATIONAL WWII MUSEUM

EDUCATIONAL TRAVEL PROGRAMS

The National WWII Museum provides vivid insight into *the war that changed the world*, and nothing can tell its story more dramatically than a visit to the sites where victory was fought for and won.

As the nation's foremost expert in WWII history, the Museum's Travel Program is dedicated to providing the highest quality educational content by creating custom-curated itineraries, arranging the finest boutique hotel accommodations, procuring comprehensive local meal packages in the countries we visit, and touring aboard premium motor coaches and cruise ships. Experience a journey in first-class comfort to the beaches, bridges, cities, and villages where crucial battles took place and history-making decisions were made.



CLICK THE QR CODE TO LEARN MORE

ABOUT US

THE JENNY CRAIG INSTITUTE FOR THE STUDY OF WAR AND DEMOCRACY



Jenny Craig Institute
for the Study of War and Democracy

The National WWII Museum's Jenny Craig Institute for the Study of War and Democracy is a community of scholars forming a national center for research, higher education, publications, and public programming, dedicated to promoting the history of World War II, the relationship between the war and America's democratic system, and the war's continued relevance for the world.



CLICK THE QR CODE TO LEARN MORE

THE VISION

The Jenny Craig Institute for the Study of War and Democracy explores the war's history and enduring legacies, and seeks to inspire civic engagement by:

- Becoming the preferred resource for audiences seeking fresh scholarship, public history, public programming, and commentary on World War II.
- Extending the reach of the Museum's public programs and publications to larger national and international audiences.
- Sustaining a network of the world's preeminent scholars and cultural leaders to promote and broaden the history, memories, and legacies of the war.
- Attracting new generations of Americans to study, research, and write about the American experience in World War II through fellowships, collections, Museum tours, lifelong learning, and additional outreach efforts.

British Field Marshal Bernard Montgomery, American General Dwight Eisenhower, Soviet Marshal Georgy Zhukov, and British Air Chief Marshal Arthur Tedder toasting victory in Frankfurt, June 16, 1945. CPA Media Pte Ltd / Alamy Stock Photo

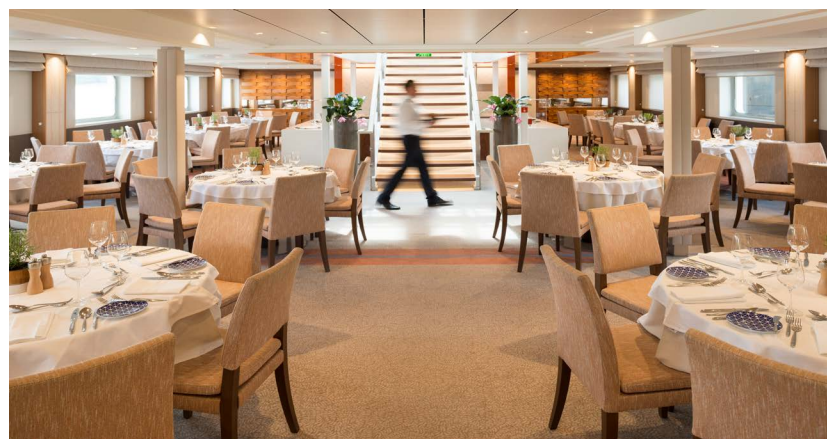


CALL US AT 504-528-1944 x 257 | 27



TOUR INCLUSIONS

- 5-night river cruise experience aboard the exclusively chartered Longship *Viking Beyla*
- 1-night hotel accommodations in Berlin
- 1-night hotel accommodations in Prague
- Full-time access and nightly conversations with featured cruise historians
- Full-time logistical tour manager
- Expert local battlefield guides
- 7 Breakfasts, 3 Lunches, and 6 Dinners
- Welcome and Farewell Receptions
- Beer, wine, spirits, coffee, water, tea, and soft drinks throughout the cruise
- A comprehensive collection of included shore excursions
- Personal listening devices on all included excursions
- Entrance fees to all sites, museums, and attractions on included excursions
- Video Oral History presentations from the Museum's collection
- Private, air-conditioned motor coach transportation on all shore excursions
- Roundtrip airport transfers (when arriving and departing on scheduled group tour dates)
- Gratuities to shipboard crew, guides, drivers, and porters
- Informative map book including useful battlefield maps and archival images to be used throughout your journey
- Personalized luggage tags and customized name badge



BOOK TODAY!

**BOOK BY JULY 31, 2024, AND
SAVE \$1,000 PER PERSON**



945 Magazine Street, New Orleans, LA 70130

1-877-813-3329 x 257

www.ww2museumtours.org

travel@nationalww2museum.org

CLICK THE QR CODE TO BOOK ONLINE



Prague to Berlin
May 1-8, 2025



Berlin to Prague
May 6-13, 2025

Payment Schedule

To reserve your participation, submit an initial deposit of \$2,500 per person within five (5) days of booking. A \$1,000 per person deposit is due for any pre- and/or post-program options that you select. Final payment is due no later than one hundred ninety (190) days prior to departure. All reservations are subject to cancellation if payments are not received by the due date. Payment by check is preferred in order to reduce costs to the Museum. VISA, MasterCard, and American Express are also accepted.

Cancellations

Should it be necessary to cancel your reservation, please contact the Museum immediately at 1-877-813-3329 X 257. Cancellations for all or any part of a tour including optional pre- and/or post-tour extension programs will not be effective until received in writing. Should you have to cancel, the following terms will apply:

Cancellation Notice Received

191 days or more before tour start date
171-191 days before tour start date
120-91 days before tour start date
90 days or less before tour start date
No Show
Early Return

Tour Cancellation Fees

\$1,000 per person
\$2,500 per person
60% of full tour cost (incl Pre and/or Post Tour)*
100% of full tour cost (incl Pre and/or Post Tour)*
100% of full tour cost (incl Pre and/or Post Tour)*
100% of full tour cost (incl Pre and/or Post Tour)*

Pre/Post Tour Cancellation Fees

\$500 per person
\$1,000 per person

*In addition, applicable cancellation fees for confirmed additional hotel nights may apply.

**Tour cost is defined as the cost of any cruise, land, or air element purchased from The National WWII Museum.

COMMEMORATE THE 80TH ANNIVERSARY OF V-E DAY WITH THESE OTHER INCREDIBLE TOUR OFFERINGS.

CUSTOMIZE A MORE COMPREHENSIVE TOUR EXPERIENCE BY ADDING THE OPTIONAL FROM THE RUBBLE TOUR EXTENSION IN BERLIN MAY 8 - 11, 2025.



D-Day: Invasion of Normandy and Liberation of France

May 2 - 8, 2025
Starting at \$4,999 per person

Normandy Beaches • Arromanches • Sainte-Mère-Église • Bayeux • Caen • Pointe du Hoc • Falaise

CUSTOMIZE A MORE COMPREHENSIVE TOUR EXPERIENCE BY ADDING THE OPTIONAL FROM THE RUBBLE TOUR EXTENSION IN BERLIN MAY 8 - 11, 2025.



Masters of the Air: The Mighty Eighth Over the Skies of Europe

April 30 - May 8, 2025
Starting at \$6,495 per person

London • Thorpe Abbots • Cambridge • East Anglia • Parham • Duxford

COMBO SAVINGS!

Book any of these tours with the V-E Day post-tour extension and receive a complimentary inter-European flight to Berlin on May 8, 2025.

CUSTOMIZE A MORE COMPREHENSIVE TOUR EXPERIENCE BY ADDING THE OPTIONAL FROM THE RUBBLE TOUR EXTENSION IN BERLIN MAY 8 - 11, 2025.



Easy Company: England to the Eagle's Nest

Featuring an original Band of Brothers cast member

April 26 - May 8, 2025
Starting at \$8,299 per person

Aldbourne • Portsmouth • Normandy • Eindhoven • Bastogne • Clervaux • Dachau • Zell Am See • Berchtesgaden

EXTEND YOUR STAY IN BERLIN WITH FROM THE RUBBLE PRE-TOUR PLUS:



Rise and Fall of Hitler's Germany

Featuring Alexandra Richie, DPhil

May 13 - 24, 2025
Starting at \$8,399 per person

Berlin • Stalag Luft III • Wrocław • Kraków • Auschwitz • Gdańsk • Wolf's Lair • Warsaw

TOUR GUESTS
SAILING FROM
PRAGUE



The National WWII Museum
945 Magazine Street
New Orleans, LA 70130
1-877-814-3329 x 257

NONPROFIT
AUTO
US POSTAGE
PAID
NEW ORLEANS, LA
PERMIT NO. 2748

SAVE \$1,000 PER PERSON

WHEN BOOKED BY JULY 31, 2024

SEE INSIDE FOR DETAILS