

Book early and save! Visit ww2museumtours.org for more details.



THE NATIONAL
WWII MUSEUM
T R A V E L

Bringing history to life

EASY COMPANY

ENGLAND TO THE EAGLE'S NEST

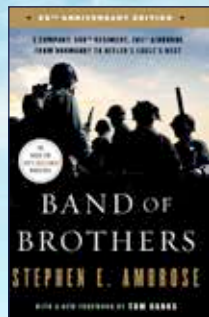
Aldbourne • Portsmouth • Normandy • Eindhoven • Arnhem
Bastogne • Clervaux • Luxembourg City • Haguenau • Dachau
Berchtesgaden • Zell am See



Join our most popular tour,
based on the best-selling book,

Band of Brothers

by Museum founder Stephen E. Ambrose,
featuring original cast members from
the award-winning HBO miniseries.





Stephen J. Watson,
President & CEO,
The National WWII Museum

Dear Friend of the Museum,

In 1980, my predecessor Nick Mueller persuaded his best friend and University of New Orleans colleague Stephen Ambrose to lead their first overseas tour – a trip from the Normandy D-Day beaches to the Rhine River. For the next 20 years, the duo continued to run tours while Ambrose began collecting hundreds of oral histories from D-Day veterans, including interviews with surviving members of the famed Easy Company.

Of course, the rest is history. Ambrose's research and interviews led to best-selling books and the HBO miniseries *Band of Brothers*. Ambrose and Mueller's passion for preserving the stories of D-Day veterans led to the idea of building a National D-Day Museum in New Orleans. And their overseas tours tracing the wartime route of the "Band of Brothers" helped raise funds for the Museum, which would open in 2000 and quickly expand its mission to include the entire war effort.

Today, the Easy Company tour remains one of our most popular travel programs and features many of those Easy Company interviews conducted by Ambrose and his team at the Eisenhower Center for American Studies. While our travel program has expanded significantly, this journey remains core to our mission – offering rare access to sites, extraordinary guides, and quaint regional accommodations. As the authority on World War II, the Museum draws upon its collection of oral histories, photographs, and artifacts to deliver the most memorable, emotional, educational, and extraordinary travel experiences.

I hope you'll join us on this personal journey to the beaches, bridges, cities, and villages where the legendary Easy Company fought the crucial D-Day battles and changed the course of history. Every tour features an original cast member from the miniseries, making our tour a truly unique experience.

Sincerely,

Stephen J. Watson,
President & CEO, The National WWII Museum

COVER PHOTO: HITLER'S MOUNTAIN RETREAT, EAGLE'S NEST (THE KEHLSTEINHAUS).

THE NATIONAL WWII MUSEUM

EDUCATIONAL TRAVEL PROGRAM

5 Museum Quick Facts

- 8 million+** visitors since the Museum opened on June 6, 2000
- \$2 billion+** in economic impact
- 160,000+** active Museum members
- 8,000+** travelers, representing every US state
- 625,000+** social media followers

TRAVEL TO 27 COUNTRIES

covering all theaters of World War II

30

Tour Programs operated on average per year, at times **accompanied by WWII veterans**

VISIT 16 & 189

Overseas American Battle Monuments Commission cemeteries & memorials plus museums on our itineraries

TRAVEL WITH EXPERTS

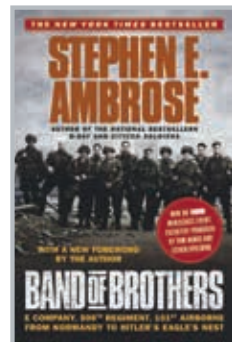
- 26** top historians with
- 174** published books and
- 47** documentary credits

ww2museumtours.org

#1 ATTRACTION IN NEW ORLEANS

FROM OUR COLLECTION

Personal and professional friendships brought together the stories of the members of Easy Company at The National WWII Museum—in our oral history collection and our exhibits. *Easy Company: England to the Eagle's Nest* is the only tour featuring many archival and research pieces pertaining to the “Band of Brothers.” Other documents and materials will be reproduced and shared with tour participants.



STEPHEN AMBROSE'S IBM® Selectrics Electric Typewriter

Dr. Ambrose used this typewriter while he was a professor at the University of New Orleans. Many of his books were written on this typewriter.

Stephen and Moira Ambrose Collection, 2006.030



GOLDEN GLOBE AWARD - *Band of Brothers*

This award was bestowed by the Hollywood Foreign Press Association for best made-for-television mini-series or film in 2001.

Stephen and Moira Ambrose Collection, 2006.003



EMMY AWARD - *Band of Brothers*

The Academy of Television Arts and Sciences presented Stephen Ambrose this award for outstanding mini-series. Ambrose was co-executive producer for the adaptation of his book into the ten-part HBO mini-series that premiered in 2001.

Stephen and Moira Ambrose Collection, 2006.030

FEATURED GUESTS

Travel in the company of original cast members from
award-winning HBO mini-series

BAND OF BROTHERS



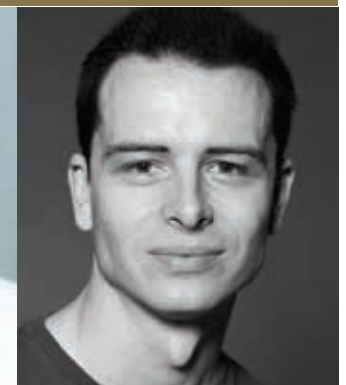
FEATURED GUEST ACTORS



Robin Laing
Pvt. Edward 'Babe' Heffron



James Madio
Sgt. Frank Perconte



Shane Taylor
Eugene G. "Doc" Roe Sr.



EASY COMPANY

ENGLAND TO THE EAGLE'S NEST

Aldbourn • Portsmouth • Normandy • Eindhoven • Arnhem
Bastogne • Clervaux • Luxembourg City • Haguenau • Dachau
Berchtesgaden • Zell am See

13 days for only ~~\$8,499~~ **\$7,999*** double occupancy

~~\$10,499~~ **\$9,999*** single occupancy

\$329 per person taxes and fees are additional.



MULTIPLE DEPARTURES AVAILABLE.

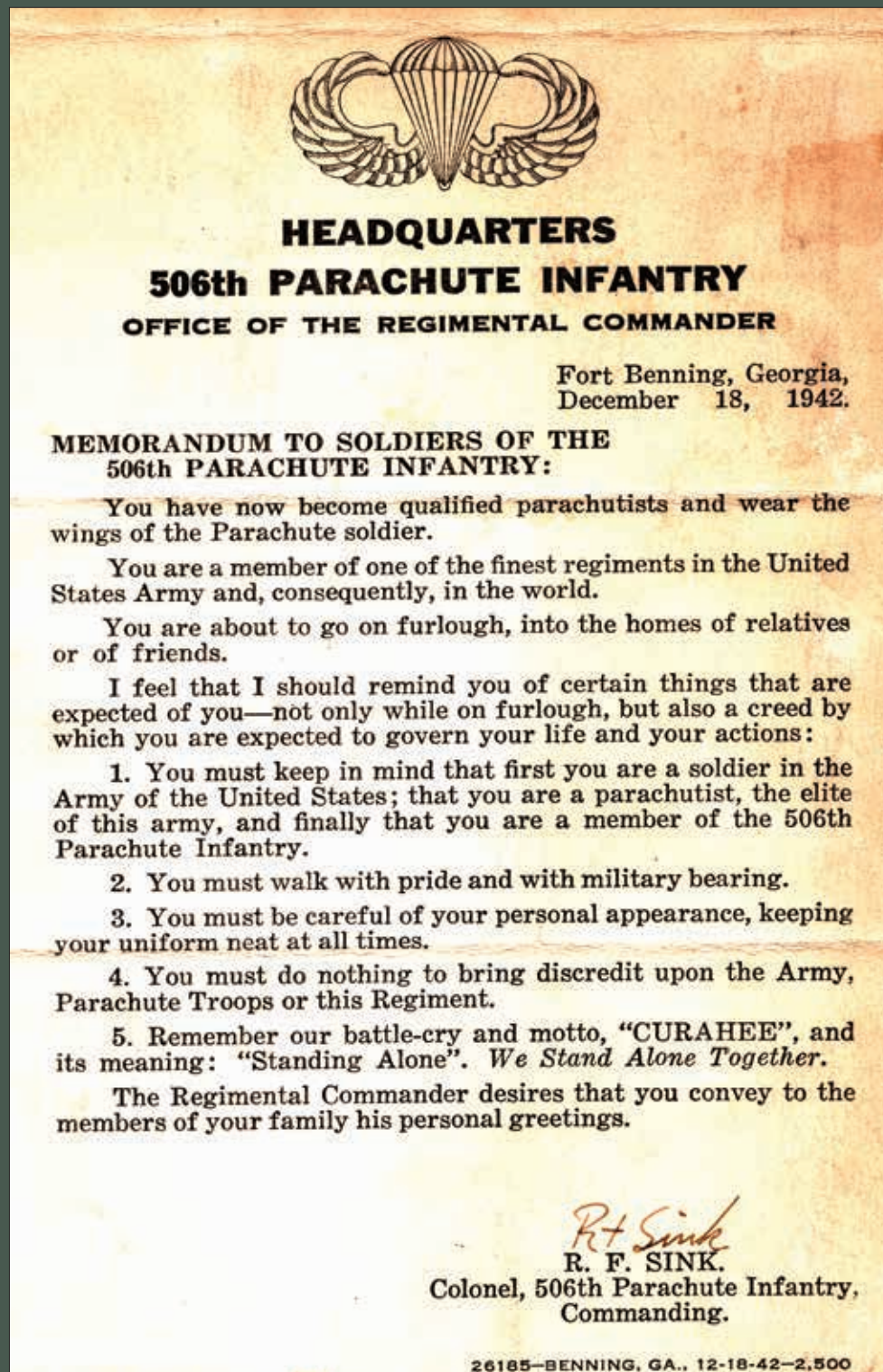
Visit ww2museumtours.org for a comprehensive listing of all tour offerings and early booking discount opportunities.

PROGRAM INCLUSIONS

- Travel in the company of a cast member from the HBO miniseries *Band of Brothers* (Actor will be announced to travelers prior to departure)
- Full-time logistical tour manager
- Expert local battlefield guides
- Roundtrip airport transfers (when arriving and departing on scheduled group tour dates)
- Boutique hotel accommodations in prime locations
- Private, first-class, air-conditioned motor coach transportation
- VIP access to sites not offered on other tours
- Entrance fees to all sites, museums, and historic attractions in itinerary
- Personal listening devices on all included touring
- Gratuities to guides, drivers, porters, and servers
- 12 breakfasts, 7 lunches, 1 reception, and 8 dinners
- Beer, wine, and soft drinks with included lunches and dinners
- Informative map book with useful battlefield maps and archival images to be used throughout the journey
- Personalized luggage tags and name badge

MORE FROM OUR COLLECTION

MEMO FROM THE OFFICE OF THE REGIMENTAL COMMANDER



HISTORICAL PERSPECTIVE

EISENHOWER'S COMMAND FOR D-DAY



As the Supreme Commander of the Allies, it was up to General Dwight D. "Ike" Eisenhower to make the final decision to launch the invasion of Normandy on June 5, 1944. Due to less-than-favorable weather reports, there was serious concern amongst many within the Allied high command that casualties would be extremely high, especially among the airborne forces. Air Marshal Sir Trafford Leigh-Mallory feared that the casualty rate for these elite troops could be as high as 75%.

Ike made the decision to postpone the landings by one day, pushing D-Day back to June 6, 1944. As he gathered his team the next night for a final war council, he polled his commanders again, and again Leigh-Mallory stressed his concern of the weather conditions and the well-being of the airborne forces. Despite these warnings, Eisenhower knew the invasion couldn't be postponed indefinitely, so he made the tough decision with the words, "OK, let's go."

Upon making this historic decision, Ike made a point to go to the airfields of one unit of the 101st Airborne Division to see the men off on this perilous mission. He wanted to meet these men, many of whom he feared wouldn't survive into the next morning, face-to-face to boost their confidence, as well as his own.

PHOTO PAGE 9: GENERAL DWIGHT D. EISENHOWER TALKING WITH AMERICAN PARATROOPERS OF THE 101ST AIRBORNE DIVISION ON THE EVENING OF JUNE 5, 1944, AS THEY PREPARED FOR THE INVASION OF NORMANDY / NARA.

THE ITINERARY



PHOTO: THE BLUE BOAR PUB IN THE VILLAGE OF ALDBOURNE , ENGLAND

Day 1: London Arrivals / Aldbourne, England

After individual arrivals into London-Heathrow (LHR), proceed west of London to the training areas of Easy Company. After lunch in Aldbourne, enjoy a walking tour with local villagers and members of the Aldbourne Historical Society, who recount what it was like to welcome Easy Company and other American troops more than 75 years ago. This evening, get to know your fellow travelers at a Welcome Reception and Dinner at the hotel.

Accommodations: Donnington Valley Hotel & Spa (L, R, D)

Day 2: Portsmouth / Cross the English Channel

After breakfast at the hotel, head south to Portsmouth. Serving as the launching point for Operation Overlord, Portsmouth is overflowing with history. The visit starts with Fort Nelson. This fully restored Victorian Fortress served as an ammunition depot supplying the batteries that defended the southern coast of Britain. The complex covers 18 acres of tunnels, fortifications, and artillery from various eras. For lunch, enjoy classic English pub fare at the Golden Lion in the picturesque village of Southwick, renowned for the planning of the D-Day landings and the historic location where Eisenhower and Montgomery met. This afternoon, cross the English Channel by ferry with a dinner onboard, landing in Normandy late in the evening.

Accommodations: Hôtel d'Argouges (B, L, D)

Day 3: Utah Beach / US Airborne

After breakfast, depart for the Utah Beach area to tour the landing beach and visit the Utah Beach Museum. View original B-26 bomber in the museum's hangar and listen to the oral history of Dick Winters on the second floor of this magnificent museum. Next, take an exclusive tour of Brécourt Manor, made famous by Easy Company's action here on June 6, 1944. In the small town of Sainte-Mère-Église, enjoy lunch independently then visit the Airborne Museum and the church made famous by the film *The Longest Day*. En route to the hotel, the coach makes a photo stop at Marmion Farm, the makeshift rendezvous point for paratroopers during the D-Day invasion. Enjoy dinner with the group this evening.

Accommodations: Hôtel d'Argouges (B, D)



PHOTO: AERIAL VIEW OF SAINTE-MÈRE-ÉGLISE CHURCH, NORMANDY, FRANCE.

IN REMEMBRANCE

MAJOR DICK WINTERS

Commander, 2nd Bn., 506th PIR

1918 – 2011

Distinguished Service Cross, Bronze Star with
Oak Leaf Cluster and Purple Heart



PHOTO: MAJOR DICK WINTERS, COMMANDER, 2ND BN., 506TH PIR, AT
SCHOONDERLOGT, HOLLAND. COURTESY OF THE GETTYSBURG



PHOTO: TOUR GUEST AT SCHOONDERLOGT, HOLLAND.
COURTESY OF THE NATIONAL WWII MUSEUM.

THROUGH THEIR EYES

Remembering Easy Company, 506th Parachute
Infantry Regiment of the 101st Airborne

Richard “Dick” Winters began his association with the 101st Airborne Division’s 506th Parachute Infantry Regiment as a platoon leader in Easy Company. By war’s end, he commanded the 506th’s Second Battalion, which included his old company. Although the attrition of war played a part in Winters’ rapid advance through the ranks, it was his superb leadership and ability to complete tough assignments that endeared him to the men under his command. The men of Easy Company who survived the war attribute their survival to many things, and the leadership of Dick Winters is always near the top of the list.

Easy Company: England to the Eagle’s Nest visits sites that Winters and his men made legendary, including Brécourt Manor where they knocked out a battery of German 105’s on D-Day; “The Crossroads” in the Netherlands where they took on a force many times their size; Foy, on the outskirts of Bastogne, where they endured hell from both the Germans and Mother Nature; the site of the “Last Patrol” in Haguenau; and finally, the Eagle’s Nest near Berchtesgaden where the men of Easy Company enjoyed Hitler’s famous mountain retreat at the end of the war.



AERIAL VIEW OF POINT DU HOC, NORMANDY, FRANCE.



PHOTO: TOUR GUESTS IN A C-47 FLIGHT SIMULATOR AT THE DEAD MAN'S CORNER MUSEUM IN CARENTAN.

Day 4: La Fièvre / Easy Company in Normandy

Today, travel along rural lanes, past hedgerows, and over causeways to La Fièvre bridge, where elements of the 82nd Airborne fought off four days of attacks from German troops trying to retake this strategic bridge. Next, travel to Beuzeville-au-Plain to view the monument to Lt. Thomas Meehan's downed C-47, and hear his story. After an included lunch, learn the story of Easy Company at the important town of Carentan, which linked the Utah and Omaha Beach forces. End the day's touring at the Dead Man's Corner Museum and with a visit to the church at Angoville au Plain. This evening enjoy free time to enjoy one of Bayeux's many quaint cafés.

Accommodations: Hôtel d'Argouges (B, L)

Day 5: Pointe du Hoc / Omaha Beach / Normandy American Cemetery

On the final day in Normandy, touring is devoted to the ground troops who came ashore in the Omaha Beach area. First, visit Pointe du Hoc, where Army Rangers faced tough odds coming ashore and scaling the imposing 100-foot cliff. Next, visit Dog Green Sector of Omaha Beach. A Company, 1st Battalion, 116th Infantry of the 29th "Blue and Gray" Division landed at "H- Hour" on D-Day. A 250-meter stretch of beach untouched by preliminary bombardments lay in front of them, and they could clearly see German bunkers in the distance. Within 15 minutes, A Company was reduced from an assault company to a small rescue party. These events inspired the opening scenes of *Saving Private Ryan*. After an included lunch overlooking Omaha Beach, spend the afternoon at the Normandy American Cemetery, where more than 9,000 Americans are laid to rest in the ground they helped liberate. Guests will be given time to walk the grounds, visit the small museum, and remember the sacrifices made here. Reflect on the day's touring during dinner with the group this evening.

Accommodations: Hôtel d'Argouges (B, L, D)



VIEW OF AMIENS DEWAILLY CLOCK AND THE CATHEDRAL OF OUR LADY OF AMIENS, AMIENS, FRANCE.



Day 6: Normandy to the Netherlands

Bid farewell to Normandy and head to The Netherlands. Along the way, view episodes from the *Band of Brothers* miniseries. Stop in picturesque Amiens, France, a city along the Somme River. Enjoy lunch and independent exploration, with time to visit the Amiens Cathedrals, the tallest complete cathedral in France, and a UNESCO World Heritage Site. Relax on the coach this afternoon. An included dinner at the hotel greets you upon arrival in Eindhoven.

Accommodations: Hotel Pullman Eindhoven Cocagne (B, D)

Day 7: Eindhoven / Arnhem / Nijmegen

In September 1944, the Allies launched Operation Market Garden, a daring airborne operation meant to secure crucial Rhine River crossings and advance into northern Germany. Although it ultimately failed to achieve its objectives, the determination and courage shown by the airborne troops and the units that assisted them made

Market Garden one of World War II's most famous battles. During today's tour, visit the actual battle sites where Easy Company fought and learn how the 101st Airborne fit into Operation Market Garden at Nuenen, Zon Bridge, and Logtenburg. After lunch, visit Schoonderlogt Farm to see where Dick Winters led the attack at "The Crossroads," the subject of Episode 5 of *Band of Brothers*. Near Arnhem, members of the company helped rescue more than 100 British airborne troops who were stuck behind enemy lines across the Rhine during Operation Pegasus in October 1944. The touring day ends in Nijmegen and "A Bridge Too Far" before returning to Eindhoven where guests enjoy an evening at leisure.

Accommodations: Hotel Pullman Eindhoven Cocagne (B, L)

PHOTO TOP: ALLIED COMMANDERS FIELD MARSHAL SIR ALAN BROOKE, WINSTON CHURCHILL, FIELD MARSHAL BERNARD MONTGOMERY, AND US LIEUTENANT-GENERAL WILLIAM CROSSING THE RHINE ON MARCH 26, 1945. COURTESY OF PICTORIAL PRESS LTD / ALAMY STOCK PHOTO. PAGE 17 BOTTOM LEFT: BRIDGE OVER THE RHINE, NIJMEGEN. COURTESY OF EVERETT COLLECTION ALAMY. PAGE 17 BOTTOM RIGHT: MODERN DAY NIJMEGEN BRIDGE.



A SHERMAN TANK AND THE GENERAL MCAULIFFE MEMORIAL PICTURED ON THE MCAULIFFE SQUARE IN BASTOGNE, BELGIUM. COURTESY OF DPA PICTURE ALLIANCE ARCHIVE / ALAMY STOCK PHOTO.

Day 8: Netherlands American Cemetery / Journey to the Ardennes

This morning, guests may choose to take a guided walking tour of Eindhoven, explore the area independently, or relax at the hotel. The optional morning tour includes details on the actions that occurred around Eindhoven, with visits to the Joe Mann Memorial and the Robert Cole Memorial. After lunch at leisure, visit the Netherlands American Cemetery in Margraten – the only American military cemetery in The Netherlands. A unique aspect of this cemetery is its connection with the Dutch people. Since 1945 members of the local community have adopted the grave sites of the American fallen. They bring flowers to the cemetery and research the life of the service member they adopt as a way to honor their sacrifice. After paying respects to members of Easy Company who are buried there, continue to the medieval market town of Clervaux, Luxembourg, in the heart of the Ardennes. Along the way, the tour guide presents an overview of the Battle of the Bulge – Hitler’s last-ditch effort to defeat the Allies in the west, and the largest land battle fought by the US Army in World War II.

Accommodations: Hotel International (B, D)

Day 9: Battle of the Bulge / Bastogne / Bois Jacques

This day is dedicated to the heroic defense of the besieged crossroads town of Bastogne as depicted in Band of Brothers Episode 6: “Bastogne.” Today’s visits also include the Mardasson Memorial, a monument honoring the memory of the American soldiers wounded or killed during the Battle of the Bulge. Next, a visit to the Bastogne War Museum provides insight into the experiences of the troops during the harsh, cold winter of 1944 - 45. In the Bois Jacques forest, guests may choose to climb in the foxholes that provided some shelter to Easy Company. Free time in Bastogne is also provided during the day for lunch – and perhaps some shopping for Belgian chocolates. The evening is at leisure.

Accommodations: Hotel International (B)

Day 10: Luxembourg American Cemetery / Haguenau

Before departing the Ardennes, the final stop is at the Luxembourg American Cemetery and Memorial, where guests visit the graves of Easy Company members and of Gen. George S. Patton. Continue to Haguenau for lunch and then walk the “Last Patrol” of Easy Company, where they held fast against Operation Nordwind, the last major German offensive of the war in the west, for more than a month. Visit the MM Park (Musee Militaire), a new museum with an impressive collection of tanks and other large artifacts of the era. Arrive in Stuttgart this evening and enjoy dinner and exploration on your own.

Accommodations: Maritim Stuttgart (B, L)

Day 11: Dachau / Zell Am See

Located ten miles northwest of Munich, the Dachau Concentration Camp was established in 1933 to hold political prisoners. Throughout the rest of the 1930s, the camp grew to hold Jews, Roma, Slavs, and more groups deemed unworthy by the Nazis. In 1943, as war raged across the continent, the Nazis constructed more than 150 subsidiary camps near Dachau where prisoners were often worked to death. The terrible conditions in Dachau and throughout the subsidiary camps led to a widespread typhus epidemic by the end of 1944, as the Allied armies were preparing to enter Germany. When the first American troops approached the camp in April 1945, the sight of the prisoners and the living conditions tested even the most battle-hardened soldiers. Episode 9 of the miniseries portrays Easy Company discovering one of Dachau’s subsidiary camps at Landsberg. After discussing why World War II was fought, the group heads to the Bavarian Alps, as Easy Company did, for the final chapter of the journey.

Accommodations: Grand Hotel Zell Am See (B, D)

PHOTO: 101ST AIRBORNE AT HITLER’S EAGLE’S NEST.



PHOTO: TOUR GUESTS AT HITLER’S EAGLE’S NEST, COURTESY OF THE NATIONAL WWII MUSEUM.

Day 12: Berchtesgaden

On the final day of touring, guests take in the spectacular views from Hitler’s Eagle’s Nest, captured by Allied forces in May 1945. A gift to Adolf Hitler for his 50th birthday in 1939, Eagle’s Nest was funded by Hitler’s inner circle. Legend says that Mussolini gifted the fireplace to the project. Although a fortune was spent to build the perch, Hitler only made 14 official visits. Return to Zell Am See and reflect on the journey during a farewell dinner at the hotel, overlooking the lake featured in the final scenes of *Band of Brothers*.

Accommodations: Grand Hotel Zell Am See (B, L, D)

Day 13: Zell Am See / Munich

Early this morning the entire group transfers together to the Munich Airport (MUC) for individual flights home.* (B)

**Please note that flights should be scheduled to depart no earlier than 12:00 noon. Weather and/or local government and venue conditions may change the final schedule. Each evening you will receive a detailed schedule for the following day, including the timing of meals and tours. If you have any questions or concerns, please contact the Travel Team.*

EXTEND YOUR JOURNEY! CHURCHILL'S LONDON

\$1,999* per person double occupancy, \$2,759* single occupancy

**\$129 per person taxes & fees are additional.*

Program Inclusions

Three-nights accommodations at the 5-star Rubens at the Palace
Transfer from London Heathrow Airport (LHR) to the hotel
Two full days of touring, including all admissions
3 Breakfasts, 2 Lunches, 1 Reception
Beer, wine, and soft drinks with included lunches and reception
Expert local guide/tour manager
Private, first class air-conditioned coach
Personal listening devices on all included touring
Gratuities to guides, drivers, porters, and servers

PHOTO: AERIAL VIEW OF CHARTWELL, HOME OF SIR WINSTON CHURCHILL.
COURTESY OF SKYSCAN PHOTOLIBRARY / ALAMY STOCK PHOTO.

Day One – Arrive London

Arrive at London Heathrow Airport (LHR), and transfer to the 5-star Rubens at the Palace Hotel in the heart of London. Relax this evening with dinner and sightseeing at your leisure.

Accommodations: Rubens at the Palace (R)

Day Two - Chartwell

Travel to Chartwell, Sir Winston Churchill's countryside manor. Pictures, books, and personal mementoes evoke the career and wide-ranging interests of this great statesman, writer, painter, and family man. Explore the hillside gardens and reflect on Churchill's love of the landscape and nature. They include the lakes he created, Lady Churchill's Rose Garden, and the playhouse built especially for his youngest daughter. After lunch on the grounds of Chartwell, return to London and enjoy an evening on your own.

Accommodations: Rubens at the Palace (B, L)

Day Three – Imperial War Museum and Churchill War Rooms

After breakfast, tour the Churchill War Rooms, which were constructed beneath the streets of Westminster during World War II. This facility served as the underground nerve center where Churchill and his inner circle directed the war in Europe. Enjoy a traditional lunch of fish and chips at a nearby English pub, then take a driving tour of London. Continue to the famed Imperial War Museum for an afternoon of exploration in the exhibits. Imperial War Museum-London is a place to experience the continuing influence of war on the world—an experience that is as compelling and thought-provoking as it is unforgettable. Return to the Rubens this evening for your final night in London.

Accommodations: Rubens at the Palace (B, L)

Day Four - Join the Easy Company Tour

Enjoy breakfast at the Rubens then transfer to Aldbourne to meet the main tour group. (B)

5-Star Accommodations

Rubens at the Palace Hotel, London

The luxurious Rubens at the Palace Hotel overlooks Buckingham Palace and lies within easy walking distance to Victoria Station. This historic hotel is fully renovated and offers a host of restaurants and bars. The beautifully appointed guest rooms are elegantly furnished with meticulous attention to detail and personal thoughtful touches. Traditional style blends seamlessly with the latest modern amenities, including complimentary Wi-Fi, an entertainment system with interactive TV, a huge selection of on-demand movies, and a music library.



STUNNING ACCOMMODATIONS

Our educational travel programs allow you to experience your journey in quaint regional boutique hotels as you go behind the scenes to the beaches, bridges, cities, and villages where crucial battles took place.*



DONNINGTON VALLEY HOTEL & SPA

-Newbury, UK-

Situated in the heart of the Berkshire countryside just outside of Newbury, Donnington Valley Hotel & Spa is a privately owned country hotel. Designed for work, relaxation, and play, the hotel boasts a 2 AA Rosette restaurant, state-of-the-art spa and health club, and a stunning 18-hole golf course. All of the 111 bedrooms and suites are elegantly designed with marble bathrooms, flat-screen TVs, a selection of films to choose from, and complimentary Wi-Fi. Bedrooms include Egyptian cotton duvets, laptop-sized safes, and complimentary bottled water.

**Please note: Due to the average climates in many of the locations visited and the historic nature of the properties utilized, air conditioning may not be available at certain hotels. Hotel accommodations are subject to change and final hotel selections will be communicated one month prior to departure.*



HÔTEL d'ARGOUGES

-Bayeux, France-

The ideal location of the historic Hôtel d'Argouges is perfect for exploring Normandy. This elegant, 18th-century residence owned by the same family for two generations invites you to experience luxury and comfort among refined surroundings: high ceilings, original doors, period fireplaces, and parquet floors polished by time.



THE PULLMAN HOTEL

- Eindhoven, The Netherlands -

This beautiful 4-star hotel is located in the charming heart of Eindhoven just opposite the luxury De Heuvel shopping center. The Pullman Eindhoven Cocagne is well-known for their Vestdijk 47 restaurant & bar. Rooms are spacious and include complimentary Wi-Fi, minibar, high-definition television, in-room safe, and room service.



HOTEL KOENER

-Clervaux, Luxembourg-

A family-owned 19th-century property, this boutique hotel is situated in a pedestrian-only area of Clervaux, and is a 2-minute walk from the medieval Clervaux Castle. The simple, comfortable rooms come with flat-screen TVs, free Wi-Fi, hair dryer and safe.



MARITIM HOTEL STUTTGART

-Stuttgart, Germany-

This beautiful hotel located right next to Hoppenlau Park showcases three restaurants, a café, piano bar, and an exclusive wellness area with swimming pool, fitness area, and beauty lounge. Guests enjoy seasonal and regional delicacies at the Reuchlin Restaurant, discover the popular Swabian “Maultasched” (filled pasta) at Café Espresso, and imbibe in a generous selection of cocktails in the Pianobar. Recently renovated in 2016, each room boasts a modern bathroom design including a rain shower with digital temperature settings.

FEATURED PROPERTY



GRAND HOTEL EXTERIOR

FEATURED PROPERTY



GRAND HOTEL DINING



GRAND HOTEL, SEEBAR



GRAND HOTEL OUTDOOR LOUNGE

GRAND HOTEL -Zell Am See, Austria-

At the end of the war, Grand Hotel Zell Am See was occupied by US forces for ten years and is best known as the hotel where the *Band of Brothers* spent time.

Today, it is the perfect end to a pilgrimage honoring Easy Company. This superior 4-star hotel is located in a unique location on a private peninsula directly on the shore of Lake Zell. In existence for more than 120 years, it provides the highest level of *Gemütlichkeit*, or regional hospitality, to our guests. A farewell dinner at this breathtaking property provides an excellent end to your tour.

Worry-free booking! Full refund until one week prior to the tour.

Family discount pricing available. Please call -1-877-813-3329 x 257



Experience THE VICTORY

NEW ORLEANS



A custom-curated, four-day group tour
to The National WWII Museum in New Orleans



Experience the #1 Attraction in New Orleans.

Travel to The National WWII Museum in New Orleans to explore, remember, and reflect on World War II through exclusive access to the Museum's campus. Don't miss this unique opportunity to experience a custom program at this world-class institution!

Four days from ~~\$1,449~~ **\$1,199** per person.
\$129 taxes and fees person are additional.

Luxury Accommodations at the Official Hotel of The National WWII Museum

Enjoy easy access to The National WWII Museum during your stay at The Higgins Hotel, located across the street from the Museum.



Prominently located in the New Orleans Warehouse District and directly on the Museum campus, the Higgins Hotel & Conference Center features a striking 1940s theme and is part of the exclusive Curio Collection by Hilton. This 4-star hotel offers spacious and well-appointed accommodations featuring 230 era-inspired guest rooms and suites, exceptional dining, and a state-of-the-art conference center, home to the Museum's many conferences, symposia, military reunions, student group visits, and student and teacher residential programs. Revenue generated by the Higgins Hotel helps fund the growth of the Museum's endowment and educational initiatives.

EXPRESSIONS of America

All-New
Sound & Light
Show

Generously presented by the Bob & Dolores Hope Foundation, *Expressions of America* is a brand-new outdoor sound and light show featuring living murals covering the facades of our buildings. Along with music, archival footage, and personal reflections, this groundbreaking show places you in the center of the war's most epic and personal moments.



Program Highlights



OUT OF THE VAULT MUSEUM TOUR
WITH A MUSEUM CURATOR



BEYOND ALL BOUNDARIES
A UNIQUE CINEMA EXPERIENCE



EARLY ACCESS TO
CAMPAIGNS OF COURAGE GALLERIES

Tour Inclusions

Out of the Vault tour with a Museum Curator
Guided touring of all of the Museum's permanent exhibits
Private Early Access to the Museum
3-day access to The National WWII Museum
A showing of *Beyond All Boundaries*
Final Mission: USS Tang Submarine Experience

3-nights stay at the Higgins Hotel with 3 breakfasts
Special group events including a welcome cocktail reception, private lunch, and VIP dinner with viewing of *Expressions of America*
Free time to explore the Museum and New Orleans on your own
3-day unlimited rides on Hop on Hop off double decker bus and streetcar lines



The National WWII Museum Educational Travel Programs

THE EUROPEAN THEATER

FLAGSHIP LAND PROGRAM



D-DAY: INVASION OF NORMANDY AND LIBERATION OF FRANCE

Normandy Beaches • Arromanches
Sainte-Mère-Église • Bayeux • Caen • Pointe du Hoc
Falaise

FLAGSHIP LAND PROGRAM



EASY COMPANY: ENGLAND TO THE EAGLE'S NEST

Featuring an original Band of Brothers cast member
Aldbourne • Portsmouth • Normandy • Eindhoven
Bastogne • Clervaux • Dachau • Zell Am See
Berchtesgaden

FLAGSHIP LAND PROGRAM



BATTLE OF THE BULGE

Featuring battlefield guide Roland Gaul and an original Band of Brothers cast member
Clervaux • Lanzerath • Elsenborn Ridge • Malmédy
La Gleize • Bastogne • Luxembourg American Cemetery • Ardennes • Bois Jacques

HISTORIAN CURATED PROGRAM



MEGASTRUCTURES

Featuring Alexandra Richie, DPhil
Hamburg • Neuengamme • Binz • Peenemünde
Szczecin • Wałcz • Bydgoszcz • Szubin • Treblinka
Warsaw

FLAGSHIP LAND PROGRAM



ITALY 1944: FROM ANZIO TO THE GOTHIC LINE

Rome • Anzio • Florence • Lucca • Ponzalla
Futa Pass

HISTORIAN CURATED PROGRAM



MASTERS OF THE AIR: THE MIGHTY EIGHTH OVER THE SKIES OF EUROPE

Featuring Donald L. Miller, PhD
London • Cambridge • Thorpe Abbots • East Anglia
Parham • Duxford

HISTORIAN CURATED PROGRAM



THE RISE & FALL OF HITLER'S GERMANY

Featuring Alexandra Richie, DPhil
Berlin • Stalag Luft III • Wrocław • Kraków
Auschwitz • Gdańsk • Wolf's Lair • Warsaw

Contact us now for available dates, more information or to reserve.

ON THE HOME FRONT

EXCLUSIVE WWII MUSEUM CAMPUS TOUR



EXPERIENCE THE VICTORY: VISIT THE #1 ATTRACTION IN NEW ORLEANS

Expressions of America sound and light show
Out of the Vault Museum Tour • Early Access to Campaigns of Courage Galleries
Beyond all Boundaries: unique cinema experience

THE PACIFIC THEATER

HISTORIAN CURATED PROGRAM



VICTORY IN THE PACIFIC: PEARL HARBOR, SAIPAN, TINIAN, GUAM, AND THE ANNIVERSARY OF THE BATTLE OF IWO JIMA

Featuring Jonathan Parshall and James M. Scott

HISTORIAN CURATED PROGRAM



VICTORY IN THE PACIFIC: WORLD WAR II IN THE PHILIPPINES

Featuring James M. Scott
Manila • Corregidor • Bataan

HISTORIAN CURATED PROGRAM



VICTORY IN THE PACIFIC: BATTLE OF GUADALCANAL

Featuring Jonathan Parshall
Brisbane • Guadalcanal • Tulagi

HISTORIAN CURATED PROGRAM



VICTORY IN THE PACIFIC: JAPAN & OKINAWA

Featuring Jonathan Parshall
Tokyo • Hiroshima • Kagoshima • Okinawa

EXCLUSIVELY CHARTERED LUXURY CRUISES

HISTORIAN CURATED LAND & CRUISE PROGRAM



NORMANDY & THE SEINE RIVER: FROM THE D-DAY BEACHES TO THE LIBERATION OF PARIS

Featuring Jonathan Boff, PhD & Michael Neiberg, PhD
Bayeux • Normandy Beaches • Sainte-Mère-Église
Pointe du Hoc • Normandy American Cemetery
Rouen • Dieppe • La Roche-Guyon & Les Andelys
Versailles or Auvers-sur-Oise

SPECIAL ANNIVERSARY CRUISE TOUR



80TH ANNIVERSARY OF D-DAY CRUISE: D-DAY AND THE BOMBER WAR

Featuring Donald L. Miller, PhD, Alexandra Richie, DPhil, John C. McManus, PhD, and Keith Lowe
Hamburg • Amsterdam • East Anglia • Dunkirk
Honfleur • Normandy Beaches • Pointe du Hoc • Dover

Call: 1-877-813-3329 X 257 • Visit: ww2museumtours.org

Book early and save \$1,000 per couple!

The Pacific Theater

Don't miss an educational travel experience
unlike any other.



Victory in the Pacific:
World War II in the Philippines



Victory in the Pacific:
Battle of Guadalcanal



Victory in the Pacific:
Japan & Okinawa

Victory in the Pacific:
Pearl Harbor, Saipan, Tinian, Guam, and
the Anniversary of the Battle of Iwo Jima

Background Photo: Aerial View of Pearl Harbor, Hawaii

To reserve or for more information

Visit: ww2museumtours.org • Call: 1-877-813-3329 x 257

Email: travel@nationalww2museum.org

The National WWII Museum, 945 Magazine Street New Orleans, LA 70130