

Book early and save! See page 7 for details.



THE NATIONAL
WWII MUSEUM
TRAVEL

Bringing history to life

D-Day: The Invasion of Normandy and Liberation of France

SPRING AND FALL 2021

Normandy Beaches • Arromanches • Sainte-Mère-Église
Bayeux • Caen • Pointe du Hoc • Falaise





Stephen J. Watson,
President & CEO,
The National WWII Museum

Dear Friend of the Museum,

One of the most inspiring moments during my 18 years with the Museum was visiting Omaha Beach in 2005 with WWII veteran Dr. Hal Baumgarten, who landed there with the 116th Infantry Regiment as part of the first wave on D-Day and was wounded five times in just 32 hours.

Nothing can match learning about the Normandy landings as you visit the very places where these events unfolded and hear the words of those who fought there.

The story of D-Day and the Allied invasion of Normandy have been at the heart of this Museum since we first opened our doors on June 6, 2000, and while our mission has expanded to cover the entire American experience in World War II, we still hold our Normandy travel programs in special regard—and consider them the very best in the market.

Drawing on our historical expertise and extensive archival collection, the Museum's highly regarded D-Day tours take visitors back to June 6, 1944, through a memorable journey from Pegasus Bridge and Sainte-Mère-Église to Omaha Beach and Pointe du Hoc. Along the way, you'll learn the timeless stories of those who sacrificed so much to pull off the greatest amphibious attack in history and ultimately secure the freedom we enjoy today.

Led by historical experts along with local managers and guides, our Normandy travel programs offer an exclusive experience that incorporates pieces from the Museum's oral history and artifact collections into presentations that truly bring history to life. After planning dozens of trips to Normandy, we've added new locations and experiences, forged new friendships and partnerships, and uncovered countless untold stories of those who fought to liberate Europe.

I hope you will take a few minutes to review this brochure, learning about the historical sites and figures our Normandy tours highlight, and then join us for this trip of a lifetime!

Sincerely,

Stephen J. Watson,
President & CEO,
The National WWII Museum

Our Pledge to You

Your Safety is our Priority

Together, we are facing an unbelievable global pandemic impacting our families, businesses, and communities. The Travel Team continuously monitors updates from global health authorities and local governments in the US and around the world. The health and safety of our travelers and staff remain our highest priority. We work closely with our international partners to provide the highest level of quality and assurance to our esteemed guests.

We are committed to delivering the best and latest sanitation protocols throughout your journey.

For more details on the guidelines in each country we visit,
contact Educational Travel Programs at 877-813-3329 x 257
or email travel@nationalww2museum.org

Experience The #1 Attraction in New Orleans.

Visit The National WWII Museum before your tour.
See page 28 for details.



The National WWII Museum
945 Magazine Street, New Orleans, LA 70130



US MARINES SALUTE AS THE AMERICAN FLAG IS RAISED ON AN ISLAND IN THE PACIFIC THEATER, 1943-45. PERSONAL OR OFFICIAL U.S. SIGNAL CORPS PHOTO, FROM THE COLLECTION OF THE NATIONAL WWII MUSEUM, GIFT OF JIM MATNEY, 2002.545.052.

STAND WHERE HISTORY WAS MADE



For more than two and a half years the Allies planned and gathered their military strength to launch the decisive amphibious invasion of northern France and strike a mortal blow against the Third Reich. In anticipation, Adolf Hitler stockpiled reserve units in the Atlantic Wall defenses across the French coastlines, determined to drive the Allied forces back into the sea when the invasion was finally launched. There would be no second chance for the Allies: The fate of the continent hangs upon this decisive day.

In the early minutes of June 6, 1944, Allied paratroopers and gliders descended from the night sky to wrest control of key bridges and roadways from the German Nazis. Behind them in the darkness of early morning, an initial force of over 130,000 servicemen from the Allied nations crossed a choppy English Channel aboard an armada of more than 5,000 ships. Their destination was Normandy, D-day had arrived.

LEARN THEIR NAMES

PHOTO: LIEUTENANT JOHN MARR.
COURTESY OF THE NATIONAL WWII MUSEUM.

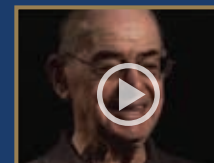


LIEUTENANT JOHN MARR 1918 – 2015

Company G, 507th Parachute Infantry
Regiment, 82nd Airborne Division

Colonel John Marr was born in Missouri in May 1918. He was drafted into the Army and entered service in June 1941. When he became aware of a new, specialized unit called the paratroopers, which would give him twice his monthly pay, Marr decided to join up. Assigned to Company G of the 507th Parachute Infantry Regiment, he was dropped behind enemy lines on June 6, 1944, with the 82nd Airborne Division. Lt. Marr saw action almost immediately near Sainte-Mère-Église, where he was involved in what is considered the costliest small-unit action in United States Army history: the Battle of La Fièvre.

After fighting in Normandy, Marr was put in command of Company B of the 507th during the Battle of the Bulge, and continued to lead the company as it spearheaded Operation Varsity, the crossing of the Rhine River, on March 24, 1945.



Hear John's story in his own words in the Digital Archive of The National WWII Museum. Visit ww2online.org and enter "John Marr" into the search field.

HEAR THEIR STORIES

PHOTO: PRIVATE HAROLD BAUMGARTEN.
COURTESY OF THE NATIONAL WWII MUSEUM.



PRIVATE HAROLD "HAL" BAUMGARTEN 1925 – 2016

116th Regiment, 29th Infantry Division

Harold "Hal" Baumgarten was born in New York City in March 1925. When he was just 18 years old, he was drafted into the US Army, was shipped overseas to England, and assigned to the 116th Infantry Regiment of the 29th Infantry Division.

On the morning of June 6, 1944, Baumgarten landed in front of the Vierville-sur-Mer draw at the Dog Green Sector of Omaha Beach, known to history as "Bloody Omaha." Of the 30 men on his landing craft, he was one of only two survivors. After the war, the multi-decorated veteran earned his MD and practiced medicine for over 40 years.

He became a renowned speaker and internationally recognized historian who wrote two books on D-Day, including *Eyewitness on Omaha Beach: A Story about D-Day*, June 6, 1944.



Hear Hal's story in his own words in the Digital Archive of The National WWII Museum. Visit ww2online.org and enter "Baumgarten" into the search field.

TOUR INCLUSIONS

Normandy’s WWII history is intriguing and moving in countless ways. You will experience these sacred sites in ways other tours can’t offer with The National WWII Museum. With unmatched local expertise, our itinerary delves deeper into the stories and tumultuous times of World War II while providing the convenience and attention to detail you expect while traveling.

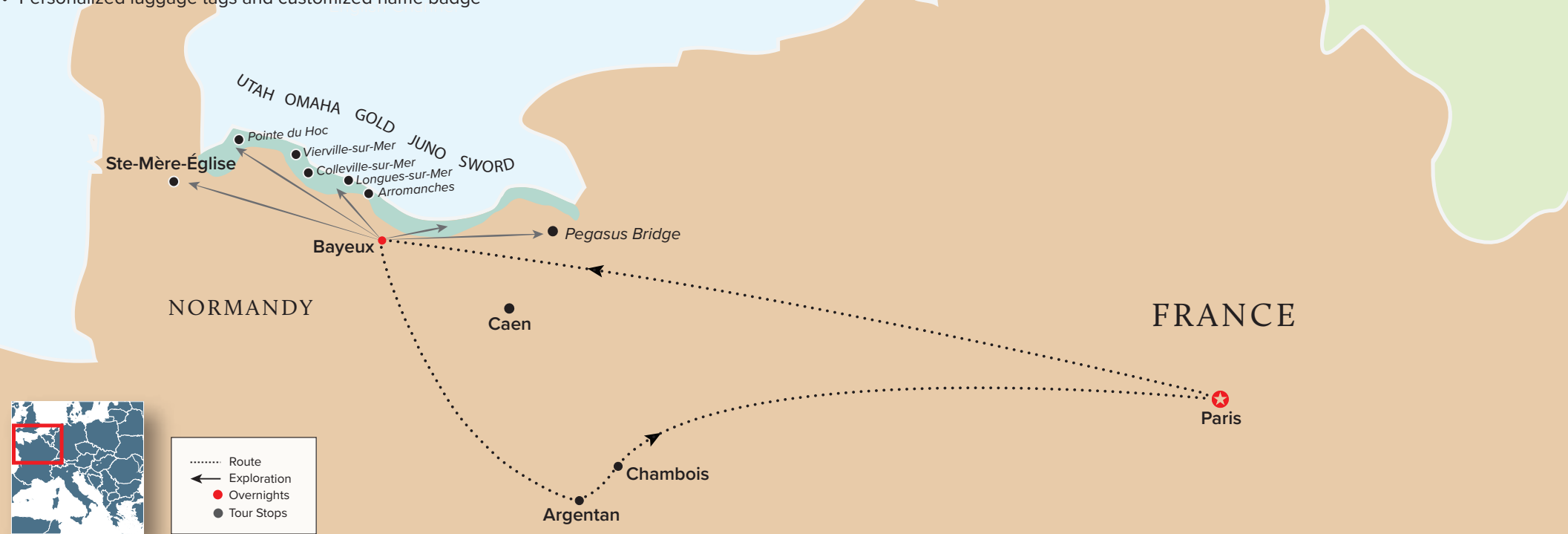
- Full-time logistical Tour Manager
- Expert local battlefield guides
- Roundtrip Airport Transfers (when arriving & departing on scheduled group tour dates)
- Historic, hand-picked, fully-renovated accommodations in Normandy
- Four-star Charles de Gaulle Airport accommodations
- Private, first-class, air-conditioned motor coach transportation
- VIP access to sites not offered on other tours
- Video Oral History presentations from the Museum’s digital collection
- Gratuities to guides, drivers, porters, and servers
- Personal listening devices on all included touring
- 6 Breakfasts, 3 Lunches, and 3 Dinners
- Beer, wine, and soft drinks with included lunches and dinner
- Informative map book including useful battlefield maps and archival images to be throughout your journey
- Personalized luggage tags and customized name badge

D-DAY: THE INVASION OF NORMANDY AND LIBERATION OF FRANCE

TOUR PRICING-SAVE \$1,000 PER COUPLE*

Date	Double Occupancy	Single Occupancy	Book By*
May 13–19, 2021	\$5,195-\$4,695*	\$7,495-\$6,995*	December 31, 2020
May 27–June 2, 2021	\$5,195-\$4,695*	\$7,495-\$6,995*	December 31, 2020
June 3–9, 2021	\$5,195-\$4,695*	\$7,495-\$6,995*	December 31, 2020
September 2–8, 2021	\$5,195-\$4,695*	\$7,495-\$6,995*	March 1, 2021
September 9–15, 2021	\$5,195-\$4,695*	\$7,495-\$6,995*	March 1, 2021
September 16–22, 2021	\$5,195-\$4,695*	\$7,495-\$6,995*	March 1, 2021

\$129 taxes and fees per person are additional. Pricing and itinerary subject to change. Airfare is not included in the price listed.



DAY 1: ARRIVE PARIS / TRANSFER TO NORMANDY

Upon arrival at Charles de Gaulle Airport in Paris, guests are warmly welcomed and transported by private motor coach to Normandy. After enjoying some free time to relax or explore Bayeux, the group gathers this evening for a welcome dinner at a local French restaurant.

Accommodations: Hotel d'Argouges (D)

PHOTO: STREET VIEW IN BAYEUX NORMANDY.

DAY 2: BRITISH SECTORS - PEGASUS BRIDGE / GOLD, JUNO & SWORD BEACHES / ARROMANCHES

Today's tour of Normandy begins where the first shots of the invasion were fired by British glider troops at the crucial Pegasus Bridge. Guests learn about Major John Howard and his men of the "Ox and Bucks" and how they were able to secure and hold the bridge. The drives along the British and Canadian sectors become the backdrop for the stories of landings that took place to the east of the American assaults. A stop at Juno Beach will highlight the Canadians who overcame strong winds, heavily-mined landing sectors, and rough seas to make impressive gains inland on D-Day. Arrive at Arromanches, and discover the remains of a Mulberry Harbor. Your guide offers insight into this great feat of engineering and ingenuity.

Following free time for lunch and exploration in the village, a trip up the commanding bluff culminates with a viewing of Cinema Circulaire 360 and a visit to the German gun battery at Longues-sur-Mer. Enjoy free time this evening to explore Bayeux and enjoy dinner at one of the many cafés and restaurants serving traditional fare.

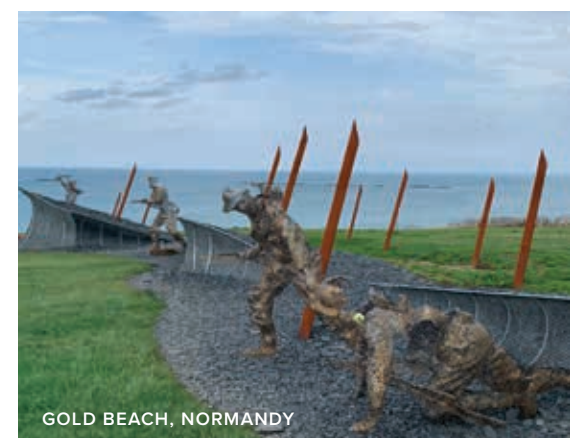
Accommodations: Hotel d'Argouges (B)



PHOTO: VIEW OF ARROMANCHES, FRANCE



CROSS OF LORRAINE, JUNO BEACH, NORMANDY



GOLD BEACH, NORMANDY

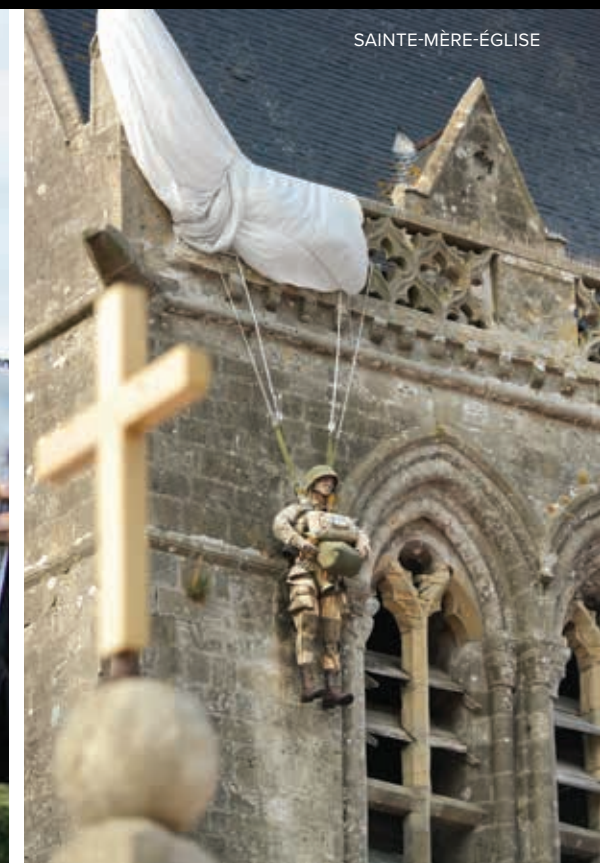


DAY 3: US AIRBORNE & UTAH BEACH

Travel along rural lanes, past hedgerows, and over causeways to La Fièvre, where the 82nd Airborne fought off four days of attacks from German troops trying to retake this strategic bridge. During today's drive, both the battlefield guide and the Museum's exclusive oral history collection offer personal stories from the men who fought on the frontlines. On arrival in Sainte-Mère-Église, the famous crossroads town where American paratroopers landed during the predawn hours of D-Day, tour the Musée Airborne and visit the church made famous in the film *The Longest Day*. After an included lunch, continue this afternoon to Brécourt Manor, where Dick Winters and some of his men from "Easy Company" launched the assault on German guns portrayed in the book and miniseries *Band of Brothers*. The day's touring concludes with a visit to the Utah Beach Museum, which includes the story of the exemplary leadership of General Teddy Roosevelt, Jr., during the landings. Enjoy another free evening at leisure in Bayeux.

Accommodations: Hotel d'Argouges (B, L)

LA FIÈRE, COURTESY OF JOHN SNOWDON



SAINTE-MÈRE-ÉGLISE



UTAH BEACH MUSEUM,
COURTESY OF JOHN SNOWDON

DAY 4: BAYEUX / CAEN

This morning's tour is devoted to the picturesque town of Bayeux, beginning with a viewing of the Bayeux Tapestry—a 230-foot-long embroidered chronicle of William the Conqueror's cross-channel invasion of England in 1066. Continue to the iconic skyline feature of Bayeux and the medieval center of the town, the Bayeux Cathedral, where a guided tour will bring to life the construction of the cathedral from the crypt to the spires. Following free time for an independent lunch, journey to Caen to tour Mémorial de Caen, a museum that places the battles of Normandy within the international context of World War II.

Accommodations: Hotel d'Argouges (B, D)

BAYEUX CATHEDRAL

BAYEUX TAPESTRY

DAY 5: OMAHA BEACH / POINTE DU HOC / NORMANDY AMERICAN CEMETERY

After breakfast, touring is devoted to the ground troops who came ashore in the Omaha Beach area. Head out for a morning visit to Pointe du Hoc, where the Army Rangers faced tough odds coming ashore before scaling the imposing 100-foot cliff. After visiting Omaha Beach, enjoy an included group lunch. The afternoon is devoted to the Normandy American Cemetery, where more than 9,000 Americans are laid to rest in the ground they helped liberate. Guests will be given time to walk the grounds, visit the small museum, and remember the sacrifices made here. Reflect on the day's touring during dinner with the group this evening.

Accommodations: Hotel d'Argouges (B, L, D)



POINTE DU HOC,
NORMANDY

GERMAN STRONGPOINT, OMAHA BEACH



AMERICAN CEMETERY, NORMANDY

DAY 6: FALAISE GAP

This morning, bid farewell to Normandy and return to Paris. Focusing on the concluding battles of the Normandy Campaign, the first stop is in Falaise, which lends its name to the Falaise Pocket, where the Allies began a move to encircle the Germans. Traveling south from the city, traverse the infamous Corridor of Death, where the awful scenes of the routed Germany army were on display for several months as dead bodies and wreckage covered the landscape. Memorial de Montormel on Hill 262, where the Poles held off a desperate German counterattack, commemorates the closing of the pocket and offers an incredible view across the landscape, and the perfect vantage point for recounting these final battles. Upon arrival at the Sheraton Paris-Charles de Gaulle Airport, the remainder of the evening is at your leisure.

Accommodations: Sheraton Paris Charles de Gaulle Airport (B, L)

DAY 7: PARIS CHARLES DE GAULLE AIRPORT
TO THE UNITED STATES

After breakfast, make your way to your departure terminal at Paris-Charles de Gaulle Airport on your own for individual journeys home. (B)



FALAISE TOWN



DOUGLAS C-47 SKYTRAIN "096"

FROM THE MUSEUM'S COLLECTION

The National WWII Museum's C-47, serial number 42-93096, was built at the Douglas Aircraft Manufacturing plant in Oklahoma City, Oklahoma. "096" was delivered to the US Army on April 8, 1944, at which time it was assigned to the 806th Army Air Force Base Unit at Baer Field, Indiana. The following month "096" was assigned to the 8th Air Force and transferred to the European theater of operations. Immediately after arriving in England on May 28, 1944, the aircraft was transferred to the 9th Air Force. One week after arriving in England, "096" carried pathfinders from the 82nd Airborne Division into the Normandy invasion.

The plane then dropped pathfinders from the 101st Airborne Division into Holland during Operation Market Garden. "096" also flew with the rest of its group to drop supplies to the 101st in Bastogne during the Battle of the Bulge. During this mission, "096" sustained minor damage from German ground fire, but the plane was repaired and placed back in service in a matter of days. The plane's final combat mission occurred on March 24, 1945, when it dropped paratroopers from the 17th Airborne Division across the Rhine River during Operation Varsity.

After the war, "096" participated in the Berlin Airlift before being transferred to the Finnish Air Force. After decades of service as both a military and civilian transport plane, and a reprisal of its participation in Market Garden for the movie *A Bridge Too Far*, "096" became a part of The National WWII Museum's collection in 2006. It is on permanent exhibit in the Louisiana Memorial Pavilion.

The purchase and restoration of the C-47 was made possible through a gift from Paul Hilliard. The National WWII Museum Inc., 2006.181



BRITISH PARATROOPER BERET

British paratroopers wore red berets during World War II, and this one belonged to Corporal Wally Parr of the Oxfordshire and Buckinghamshire Light Infantry.

He wore it on D-Day, throughout the Battle of Normandy, at the Battle of the Bulge, in Denmark, and after the war in Palestine. A tear in the beret was caused by a shell fragment that tore a gash in the side of Parr's head on July 22, 1944.

Gift of Wally Parr, 1995.002.001

101ST AIRBORNE EASY COMPANY HELMET

This US M1 infantry helmet with airborne liner was worn by Edward Sabo, member of Easy Company, 2nd Battalion, 506th Parachute Infantry Regiment, 101st Airborne Division, during and after the Normandy invasion. Each of the four infantry regiments in the 101st Airborne used a suit from a deck of cards as its identifying mark. The spade went to the 506th Parachute Infantry Regiment hence the mark on the side of this helmet.

Gift of Linda Sabo Peck, 2033.352.001



GERMAN BOOTS

The black leather boots pictured here were worn by Franz Gockel on Omaha Beach on June 6, 1944. Franz Gockel's 18th birthday passed while he was defending the Atlantic Wall as a member of Germany's 726th Infantry Regiment of the 352nd Infantry Division. He manned a captured Polish machine gun in Widerstandsnest (Resistance Nest) 62 on Omaha Beach.

Gift of Franz Gockel, 2004.235.005

PARACHUTE WEDDING DRESS

Wedding dresses were made from parachutes on the US Home Front and in postwar occupied Europe. The war led to shortages of most fabrics, and to have dresses for their special day, brides often would acquire a parachute from a relative serving in the military. The parachute would then be cut up and turned into a dress, either at home or by a dedicated dressmaker. This dress was worn by Myrtille Delassus when she married American GI Sergeant Joseph Bilodeau in France shortly after the end of the war.

Gift of Myrtille M. Bilodeau, 2010.233.003



FEATURED ACCOMMODATION

FEATURED ACCOMMODATION



HÔTEL d'ARGOUGES

Bayeux, France

Handpicked for your comfort and convenience

The ideal location of the historic Hôtel d'Argouges is perfect for exploring Normandy. This elegant, 18th-century residence owned by the same family for two generations invites you to experience luxury and comfort among refined surroundings: high ceilings, original doors, period fireplaces, and parquet floors polished by time.

OPTIONAL EXTENSION PROGRAM

OPTIONAL TWO-NIGHT PRE-TOUR EXTENSION PROGRAM

THE TREASURES OF NORMANDY

Only \$1,199 per person double occupancy,
\$1,799 single occupancy
\$129 taxes and fees are additional.



Journey into the Middle Ages on our custom-curated extension program focused on the historic importance of the picturesque Normandy region.

MONT SAINT-MICHEL



CHÂTEAU DE FALAISE

Program Itinerary

Day One – Arrive Paris, transfer to Normandy

Enjoy a scenic transfer from Charles de Gaulle Airport (CDG) to Bayeux and settle into the historic Hotel d'Argouges. Spend the afternoon and evening exploring the medieval town center and enjoying dinner at one of the many quaint restaurants serving traditional fare.

Accommodations: Hotel d'Argouges

Day Two - Falaise

On your first day of touring, journey to the picturesque town of Falaise, the birthplace of William the Conqueror. Visit Chateau de Falaise, the seat of the Dukes of Normandy from the 13th century to the 17th century, when it was abandoned. During World War II, the chateau suffered from heavy bombardment during the Battle of the Falaise Pocket, but was restored after the war. Next, visit the Memorial des Civils, dedicated to the Norman civilians who were affected by the D-Day invasion and during the ensuing 3 months of the Battle of Normandy. Return to Bayeux for an evening at leisure.

Accommodations: Hotel d'Argouges (B)

Day Three - Mont Saint-Michel

Today's touring includes a trip to a breathtaking tidal island just off the Normandy coast. The island's signature abbey projects a dominating presence that has attracted pilgrims, armies, and tourists for more than a millennium. The visit includes lunch. Return to Bayeux this afternoon and attend a welcome dinner with main tour guests arriving today.

Accommodations: Hotel d'Argouges (B, L)

Program Inclusions

- Two-night accommodations at the historic 4-star Hôtel Le Lyon d'Or
- Transfer from Paris-Charles de Gaulle Airport (CDG) to Bayeux
- Two days of touring, including all admissions
- 2 Breakfasts, 1 Lunch
- Beer, wine, and soft drinks with included lunches
- Expert local guide / tour manager
- Private, first class air-conditioned coach
- Personal listening devices on all included touring
- Included gratuities to guides, drivers, porters, and servers



The National WWII Museum 2021 EDUCATIONAL TRAVEL PROGRAMS

The European Theater



FLAGSHIP LAND PROGRAM

D-DAY: INVASION OF NORMANDY AND LIBERATION OF FRANCE

Normandy Beaches • Arromanches • Sainte-Mère-Église
Bayeux • Caen • Pointe du Hoc • Falaise

NOW BOOKING ALL 2021 DEPARTURES!



HISTORIAN CURATED PROGRAM

NEW PILSEN LIBERATION FESTIVAL 2021:
Celebrating the 75th & 76th Anniversary of Liberation
by the US Army in Pilsen, Czechoslovakia
Featuring Alexandra Richie, DPhil

Prague • Lidice • Theresienstadt • Pilsen

One Date Only! May 2–10, 2021



HISTORIAN CURATED PROGRAM

NEW MEGASTRUCTURES
Featuring Alexandra Richie, DPhil

Hamburg • Neuengamme • Binz • Peenemünde
Szczecin • Wałcz • Bydgoszcz • Łódź • Treblinka
Warsaw

One Date Only! July 11–22, 2021



LAND AND CRUISE PROGRAM

NORMANDY & THE SEINE RIVER: FROM THE
D-DAY BEACHES TO THE LIBERATION OF PARIS
Featuring Robert M. Citino, PhD & Michael Neiberg, PhD
Paris • Arromanches • Normandy Beaches • Rouen
Dieppe • Les Andelys • La Roche Guyon
Mantes-la-Jolie • Auvers-sur-Oise
One Date Only! October 31–November 8, 2021



FLAGSHIP LAND PROGRAM

EASY COMPANY: ENGLAND TO THE EAGLE'S NEST

Featuring original Band of Brothers cast members

Aldbourne • Portsmouth • Normandy • Eindhoven
Arnhem • Bastogne • Clervaux • Haguenau • Dachau
Zell am See

NOW BOOKING ALL 2021 DEPARTURES!



HISTORIAN CURATED PROGRAM

BATTLE OF THE BULGE

*Featuring Roland Gaul and a Band of Brothers
cast member*

Clervaux • Lanzerath • Elsenborn Ridge • Malmedy
La Gleize • Bastogne • Luxembourg American Cemetery

May 27–June 2, 2021 and September 5–11, 2021



FLAGSHIP LAND PROGRAM

ITALY 1944: FROM ANZIO TO THE GOTHIC LINE

Rome • Anzio • Florence • Lucca • Ponzalla
Futa Pass

April 11–17, 2021, April 26–May 2, 2021, and
October 10–16, 2021



HISTORIAN CURATED PROGRAM

MASTERS OF THE AIR: THE MIGHTY EIGHTH OVER THE SKIES OF EUROPE

Featuring Donald L. Miller, PhD

London • Cambridge • Thorpe Abbott • East Anglia
Rougham • Duxford

Only One Date Still Available! July 21–28, 2021



HISTORIAN CURATED PROGRAM

THE RISE & FALL OF HITLER'S GERMANY

Featuring Alexandra Richie, DPhil

Berlin • Żagań • Wrocław • Kraków • Gdańsk
Wolf's Lair • Warsaw

Only One Date Still Available! July 27–August, 7, 2021

The Pacific Theater



HISTORIAN CURATED PROGRAM

VICTORY IN THE PACIFIC: PEARL HARBOR, SAIPAN, TINIAN, GUAM, AND THE 76TH COMMEMORATION OF IWO JIMA

Featuring Jonathan Parshall and James M. Scott

*One Date Only! March 2021

*Extend your journey with the Victory in the Pacific: World
War II in the Philippines tour or the Peleliu optional post-tour



HISTORIAN CURATED PROGRAM

NEW VICTORY IN THE PACIFIC: WORLD WAR II IN THE PHILIPPINES

Featuring James M. Scott

Manila • Corregidor • Bataan

*February 20–28, 2021 and March 2021



HISTORIAN CURATED PROGRAM

NEW VICTORY IN THE PACIFIC: BATTLE OF GUADALCANAL

Featuring James Hornfischer

Brisbane • Guadalcanal • Tulagi

One Date Only! August 13–21, 2021



HISTORIAN CURATED PROGRAM

NEW VICTORY IN THE PACIFIC: JAPAN & OKINAWA

Featuring Jonathan Parshall

Tokyo • Kagoshima • Hiroshima • Okinawa

One Date Only! October 16–26, 2021

Contact us now for more information or to reserve, space is limited.

Call: 1-877-813-3329 X 257 • Visit: ww2museumtours.org

Booking early has its rewards!

Worry-free booking! Full refund until one week prior to the tour.

OPERATION HOMEFRONT

Beyond the Galleries

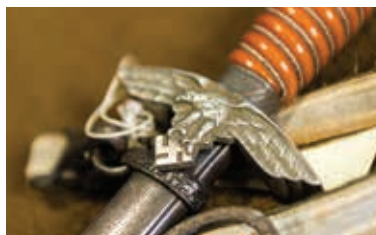
October 22–25, 2020 from \$1,399 per person



Private Guided Tours



Exclusive 4-D Cinema Experience



Curator's Collection Tour

Experience the #1 Attraction in New Orleans.

Travel to The National WWII Museum in New Orleans to explore, remember, and reflect on World War II through exclusive access to the Museum's campus. Don't miss this unique opportunity to experience a custom program at this world-class institution!

TOUR INCLUSIONS

- 3 night stay & 3 breakfasts at the Higgins Hotel
- 1 lunch at the American Sector Restaurant
- 1 private dinner
- 1 cocktail reception
- Private Early Access Tour of the Museum
- Final Mission: USS Tang Submarine Experience

- 3-day access into The National WWII Museum
- 3-day unlimited access Hop-on Hop-off double deck New Orleans city bus tickets

OPTIONAL ADD-ON EXPERIENCES*

BB's Stage Door Canteen dinner show, pre- or post-nights at the Higgins Hotel, and suite upgrades.

*Depending on availability

*From ~~\$1,649~~ **\$1,399** per person.
\$129 taxes and fees person person are additional.

Enjoy luxury accommodations at the official hotel of
The National WWII Museum

Prominently located in the heart of the New Orleans Warehouse District and directly on the Museum campus, The 4-star Higgins Hotel & Conference Center is part of the exclusive Curio Collection by Hilton and features a striking 1940s theme, well-appointed accommodations, exceptional dining, and a state-of-the-art convention center.

TERMS AND CONDITIONS

TOUR FARE

Your tour fare covers arrangements and services including hotel accommodations, meals as per the itinerary, gratuities, ground transportation, guiding services, and special tour inclusions as described within the travel program brochures and on the Museum's website at: www.ww2museumtours.org. All fares are quoted in US dollars, are per guest, and are based on double occupancy. As indicated below, airfare to and from the tour destination is not included in your tour fare the Museum accepts no liability for the purchase of nonrefundable airline tickets.

Prices quoted are based on fares in effect at the time of printing and are subject to change at any time. On land and/or cruise programs, up to the time of full payment the Museum reserves the right to increase the tour price in the event of cost increases due to changes in supplier costs, currency fluctuations or fuel or energy surcharges and all such increases are to be paid to the Museum upon notice to the tour participant of such increases.

NOT INCLUDED

Taxes, unless otherwise noted in the travel program brochure; passport, visas, and associated fees; personal expenses such as laundry, telephone calls, and Internet access; accident/sickness, trip cancellation, and baggage insurance; gratuities to ship and hotel personnel, unless otherwise noted in the travel program brochure; optional sightseeing excursions; airfare, baggage charges on aircraft; local departure air/airport taxes; and associated local taxes, airport facility and security taxes and federal inspection fees not listed as included in the travel program; transfers and baggage handling to/from airport/hotel/ship on day(s) of arrival and/or departure if you are arriving earlier or later than and/or departing earlier or later than the scheduled group transfer(s); any overnight expenses on land due to flight schedule(s) or delays; meals, alcoholic or other beverages and all other services not specifically mentioned as included in the travel program.

PAYMENT SCHEDULE

To reserve your participation, submit an initial deposit of \$1,000 per person/per tour within five (5) days of booking. A \$200 per person/per tour deposit is due for any pre- and/or post- program options that you select. Final payment is due no later than ninety (90) days prior to departure. All reservations are subject to cancellation if payments are not received by the due date. Payment by check is preferred in order to reduce costs to the Museum. VISA, MasterCard and American Express are also accepted.

CANCELLATIONS

Should it be necessary to cancel your reservation, please contact the Museum immediately at 1-877-813-3329 x 257. Cancellations for all or any part of a tour including optional pre- and/or post-tour extension programs will not be effective until received in writing. Should you have to cancel, the following terms will apply:

CANCELLATION NOTICE RECEIVED BEFORE TOUR FEES	TOUR CANCELLATION FEES	PRE- AND/OR POST-CANCELLATION START DATE
121 days or more	\$200 per person	\$50 per person
120 – 91 days	\$1,000 per person	\$200 per person
90 – 61 days	60% of full tour cost (incl Pre- and/or Post-Tour)*	
60 days or less, No-Show, or Early Return	100% of full tour cost (incl Pre- and/or Post-Tour)*	
*In addition, applicable cancellation fees for confirmed additional hotel nights may apply. Tour cost is defined as the cost of any cruise, land, or air element purchased from The National WWII Museum.		

TRAVEL INSURANCE

Because our cancellation policy is strictly enforced, we strongly recommend that you purchase trip cancellation insurance. In the event that you must cancel your participation, trip cancellation insurance may be your only source of reimbursement. Travel Cancellation is offered through the Museum's Travel Department and information is included in your initial confirmation packet accordingly.

HEALTH, MEDICAL, AND TOUR REQUIREMENTS

All guests are required to advise in writing to the Museum at the time their reservation is made if they have:

- Any physical or mental condition that may require medical or professional treatment or attention during the tour;
- Any condition that may pose a risk to one's self and/or other participants on tour;
- Any condition that may require health aids, i.e.; oxygen, walkers, crutches, etc., or any intention or need to use a wheelchair while on the tour.

By booking passage the guest represents and warrants that he/she is physically and otherwise fit to travel and that guests will comply at all times with applicable rules and regulations of the Museum. The Museum reserves the right without liability to require a passenger to leave the tour or to refuse to accept a guest as a tour participant who, in the sole judgment of the Museum, is unfit to travel, is a danger to himself or herself or to others, does not follow instructions of the tour leader, may distract from the enjoyment of the trip by others or may require care beyond that which the Museum is reasonably able to provide.

We highly recommend that participants purchase a travel insurance package that provides medical coverage since most US policies do not provide coverage outside the United States.

TERMS AND CONDITIONS

LUGGAGE

Luggage will be limited to one (1) suitcase and one (1) carry-on per person to ensure that there is enough room on the motor coach for all passenger luggage. All luggage must be securely packed and clearly labeled. We recommend that all participants secure baggage loss-and-damage insurance that may be purchased for this tour.

Please see airline weight and size restrictions for luggage on international flights. The Museum is not responsible for loss or damage to luggage or any other personal item during air travel, while in a hotel during land programs, on a cruise or while on shore excursions. Under no circumstances may dangerous items (i.e. explosives, firearms, liquid oxygen, combustible or illegal substances) be taken on the tour. We recommend that you hand carry travel documents (passports and tour tickets), medications and valuables, and check with your airline regarding carry-on baggage restrictions. These items are the full responsibility of the guest at all times. The Museum shall not be responsible for the loss of or damage to such personal items.

LAND TOURS, LECTURES, AND PERSONALITIES

All tours are operated by independent contractors. These independent contractors may impose additional terms and conditions and limitations of liability on tour participants. Other independent contractors retained by the Museum such as lecturers, guest personalities, and entertainers are subject to change and/or cancellation without notice.

TRAVEL DOCUMENTS

All travel documents (air and tour tickets, passport) are the responsibility of the guest. It is also your responsibility to comply with all customs requirements. Without the required documents, you may be denied boarding and the Museum will not be liable for such denial or bear any financial responsibilities as a result thereof.

Security measures imposed by governments may change from time to time and you will be required to comply with them. We will endeavor to provide you with notice of measures which may affect you; but complying with any such requirement is your responsibility.

LIMITS ON THE NATIONAL WWII MUSEUM RESPONSIBILITY

The National World War II Museum Inc., a New Orleans, Louisiana, based nonprofit 501(c)(3) organization and its employees, shareholders, subsidiaries, affiliates, officers, directors or trustees, successors, and assigns (collectively "the Museum"), does not own or operate any entity which is to or does provide goods or services for your trip including; lodging facilities, airline, vessel, or other transportation companies, guides or guide services, local ground operators, providers or organizers of optional excursions, food service, or entertainment providers, etc. All such persons and entities are independent contractors. As a result, the Museum is not liable for any negligent or willful act or failure to act of any such person or entity or of any other third party.

In addition and without limitation, the Museum is not responsible for any injury, loss, death, inconvenience, delay, or damage to person or property in connection with the provision of any goods or services whether resulting from, but not limited to, acts of God or force majeure, acts of government, acts of war or civil unrest, insurrection or revolt, bites from or attacks by animals, insects or pests, strikes or other labor activities, criminal or terrorist activities of any kind or the threat thereof, sickness, illness, epidemics or the threat thereof, the lack of availability of or access to medical attention or the quality thereof, overbooking or downgrading of accommodations, mechanical or other failure of airplanes, vessels or other means of transportation, or for any failure of any transportation mechanism to arrive or depart timely or safely. Participants assume all such risks as well as the risk of negligence by the Museum and specifically releases the Museum therefrom.

If due to weather, flight schedules, or other uncontrollable factors, you are required to spend an additional night(s), you will be responsible for your own hotel, transfers and meal costs. Baggage is entirely at owner's risk. The right is reserved to decline to accept as a trip participant, or remove from a trip, without refund, any person the Museum judges to be incapable of meeting the rigors and requirements of participating in the activities, or who is abusive to other trip participants, leaders or third parties, or who the Museum determines to detract from the enjoyment of the trip by others. Specific room/cabin assignments are within the sole discretion of the hotel or cruise line.

The Museum reserves the right to change the itinerary or trip features at any time and for any reason, with or without notice, and the Museum shall not be liable for any loss of any kind as a result of any such changes. Ship schedules, port calls, hours of arrival and departure, sightseeing events, special programs and guest lecture series (if applicable), are subject to change or cancellation without prior notice. The Museum is not responsible therefore and is not required to compensate passengers under these circumstances. The Museum may cancel a trip (or an option) for any reason whatsoever; if so, its sole responsibility is to refund monies paid by the participant to it. The Museum is not required to cancel any trip for any reason including without limitation, United States Department of State, World Health Organization, or other Warnings, or Advisories of any kind. The Museum is not responsible for penalties assessed by air carriers resulting from operational and/or itinerary changes, even if the Museum makes the flight arrangements or cancels the trip. The Museum reserves the right to substitute vessels, hotels, itineraries or attractions for those listed in this brochure.

BINDING ARBITRATION

I agree that any dispute concerning, relating or referring to this Agreement, the brochure or any other literature concerning my trip, or the trip itself, shall be resolved exclusively by binding arbitration pursuant to the Federal Arbitration Act, 9 U.S.C. §§1-16, either according to the then existing Commercial Rules of the American Arbitration Association (AAA) or pursuant to the Comprehensive Arbitration Rules & Procedures of the Judicial Arbitration and Mediation Services, Inc. (JAMS). Such proceedings will be governed by substantive (but not procedural) Louisiana law and will take place in New Orleans, LA. The arbitrator and not any federal, state, or local court or agency shall have exclusive authority to resolve any dispute relating to the interpretation, applicability, enforceability, conscionability, or formation of this contract, including but not limited to any claim that all or any part of this contract is void or voidable. Please understand that by agreeing to these terms and conditions, you and we, are waiving our right to a trial by jury.

The Museum is not responsible for misprints in tour promotional material.

30 | VISIT US AT WW2MUSEUMTOURS.ORG

RESERVATION FORM

D-DAY: THE INVASION OF NORMANDY AND LIBERATION OF FRANCE SPRING AND FALL 2021

SEND FORM TO:
The National WWII Museum Travel
945 Magazine Street, New Orleans, LA 70130
Toll Free: 1-877-813-3329 x 257 • Fax: 1-504-503-0995
Visit ww2museumtours.org
Email: travel@nationalww2museum.org

Please make my/our reservation for the following tour:

May 13–19, 2021	<input type="checkbox"/> \$5,195 \$4,695 * double occupancy	<input type="checkbox"/> \$7,495 \$6,995 * single occupancy
May 27–June 2, 2021	<input type="checkbox"/> \$5,195 \$4,695 * double occupancy	<input type="checkbox"/> \$7,495 \$6,995 * single occupancy
June 3–9, 2021	<input type="checkbox"/> \$5,195 \$4,695 * double occupancy	<input type="checkbox"/> \$7,495 \$6,995 * single occupancy

**When booked by December 31, 2020. \$129 per person taxes and fees additional.*

September 2–8, 2021	<input type="checkbox"/> \$5,195 \$4,695 * double occupancy	<input type="checkbox"/> \$7,495 \$6,995 * single occupancy
September 9–15, 2020	<input type="checkbox"/> \$5,195 \$4,695 * double occupancy	<input type="checkbox"/> \$7,495 \$6,995 * single occupancy
September 16–22, 2021	<input type="checkbox"/> \$5,195 \$4,695 * double occupancy	<input type="checkbox"/> \$7,495 \$6,995 * single occupancy

**When booked by March 1, 2021. \$129 per person taxes and fees additional.*

The Treasures of Normandy Optional Two-Night Pre-Tour Extension Program

☐ \$1,199* double occupancy ☐ \$1,799* single occupancy (limited availability)

**\$129 per person taxes and fees additional.*

Bedding preference: ☐ Twin (2 beds) ☐ Queen

All passengers must travel with a passport valid at least 6 months beyond their return date.

Guest 1: Full Legal Name (as it appears on your passport)

Title: _____ First: _____ Middle: _____ Last: _____

Mailing Address: _____

City: _____ State: _____ ZIP: _____

Home Ph: _____/_____ Cell: _____/_____

Roommate (if different from below): _____

EmailAddress: _____

Birthdate: _____/_____/_____ Preferred Name on Badge: _____

Guest 2: Full Legal Name (as it appears on your passport)

Title: _____ First: _____ Middle: _____ Last: _____

Email Address: _____

Birthdate: _____/_____/_____ Preferred Name on Badge: _____

DEPOSIT AND FINAL PAYMENT: A deposit of \$1,000 per person (plus \$200 deposit per person for each Pre-Tour Extension, if applicable) is due with your reservation application. Final payment must be received no later than 90 days prior to departure. Applicable taxes and fees will be added to the final invoice.

Please reserve _____ space(s). Enclosed is my/our deposit for \$_____.

Deposits and FINAL payments may be made by personal check, American Express, MasterCard, Visa, and Discover.

☐ Accept my check made payable to The National WWII Museum.

Charge my: ☐ MasterCard ☐ Visa ☐ American Express ☐ Discover

Card#: _____ CVV/Security Code: _____ Expires _____/_____

Signature as it appears on card: _____

Making a deposit or acceptance or use of any vouchers, tickets, goods or services shall be deemed consent to and acceptance of the terms and conditions stated in the applicable Terms and Conditions agreement, including limitations on responsibility and liability.
(Museum)

CALL US AT 1-877-813-3329 x 257 | 31

Book early and save \$1,000 per couple!



THE NATIONAL
WWII MUSEUM
T R A V E L

Presenting immersive tours of World War II in every theater of war. Nothing can match learning WWII history as you see and experience the very places where these events unfolded.



The European Theater



The Mediterranean Theater



The Pacific Theater



The Home Front

FEATURED GUEST MATTHEW LEITCH WITH TOUR GUESTS AT THE MARDASSON MEMORIAL IN BASTOGNE, BELGIUM ON THE EASY COMPANY: ENGLAND TL THE EAGLE'S NEST TOUR.



Call: 1-877-813-3329 x 257 • Email: travel@nationalww2museum.org

Visit: ww2museumtours.org

The National WWII Museum Travel • 945 Magazine Street • New Orleans, Louisiana, 70130