

KIT INFORMATION:

Museum will mail your team:

- 1 Mat
- 1 Mousetrap
- 1 Bowling pin
- 1 Pencil
- 1 Cardboard box
- 1 Condiment cup with aquarium rocks
- 1 Toy boat
- 1 Fidget spinner
- 1 Barrel with radioactive sticker
- 1 Jenga block spray painted silver
- Water and heavy water molecule pieces
- 1 Doomsday sticker
- 1 PVC pipe
- 1 craft stick

The following items can be found on the Museum's website, under "Team Assets":

- Kit information packet that includes:
 - Assembly instructions and mat set up (below)
 - Einstein's letter (below)
 - Russian decoder (below)
- Participant packet
- Access to the Manhattan Project Electronic Field Trip

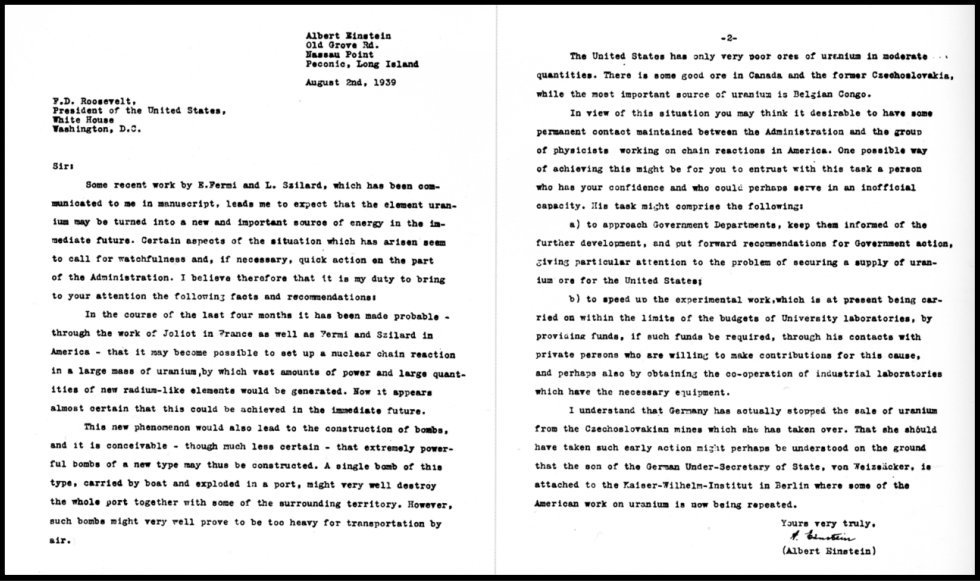
ASSEMBLY INSTRUCTIONS:

- Find a piece of paper and crumple it into a ball
- Fold the cardboard box
- Print out the Russian Decoder
- Print the Einstein letter and KGB folder on cardstock. Cut and fold in half so they can stand up.
- Print Russian De-coder key.
- Cut out the “Russian” code and glue or tape it to the inside of the KGB folder.
- Assemble the water molecule
- Put the radioactive sticker on the barrel of slime
- Place the doomsday sticker on top of the PVC pipe. Glue down if needed.

MAT SET UP:

- Place the KGB folder on smaller Berkeley, California icon.
- Place the boat on the X in the Atlantic Ocean.
- Place the water molecule on Sylacauga, Alabama. Orient the molecule so that the green oxygen molecule sits in the red dot and the two hydrogen legs face towards the bottom of the mat.
- Place the plutonium brick (Jenga block) on Hanford, Washington so that it is centered on the red dot and parallel with the bottom of the mat, hot dog style.
- Place the mouse trap along the north-east border of New Mexico so the trigger is facing North. Stick the craft stick in the trap for safety.
- Place the cardboard box along the northern border of Illinois.
- Place the barrel of radioactive waste on St Louis.
- Place the Doomsday Clock in the center of the Manhattan Project symbol.
- All other materials are to be placed in your preparation area.

EINSTEIN'S LETTER:



KGB FOLDER: ФАТ МАН РЭДИ





RUSSIAN DE-CODER

Use the sounds highlighted
in red

CHARACTER	SOUND
А	ask
Б	bat
В	van
Г	go
Д	dog
Е	yet
Ё	yonder
Ж	measure
З	zoo
И	see
Й	toy
К	cat
Л	light
М	mat
Э	pet

CHARACTER	SOUND
П	pot
Р	run
С	sam
Т	tap
У	boot
Ф	fat
Я	yum
Ц	bits
Ч	chip
Ш	ship
О	bore or under
Н	no
Ы	ill
Ю	universe