



# VICTORY IN THE PACIFIC

Pearl Harbor, Saipan, Tinian, Guam, and

*The 74<sup>th</sup> Commemoration of Iwo Jima*

MARCH 15 – 25, 2019

Featuring Two Optional Post-Tour Extensions

*The Road to Tokyo & The Battle for Peleliu*

Save \$2,000 per couple and receive complimentary air!

*Book by December 28, 2018*



## Walk on the black sands of Iwo Jima...

Take a journey that centers around the story of the Americans who forged a road to Tokyo through courage, ingenuity, and sacrifice, and ended the war, at last. Retrace the grueling trail that led from Pearl Harbor to Tokyo Bay, explore the evolving strategy for fighting relentless Japanese forces in Asia and the Pacific, and examine cultural differences, logistical challenges, and the staggering range of extreme conditions that confronted American military forces.



PHOTO: American Marines advancing up beaches after landing on Iwo Jima. Courtesy of Louis R. Lowery / US Marine Corps / The LIFE Picture Collection / Getty Images.

## Dear Friend of the Museum

The Pacific theater introduced our troops to new environments and cultures completely unfamiliar to most Americans. The Museum is honored to offer a travel program that provides the unique opportunity to explore these relatively untouched Pacific island battlefields and landing beaches in the company of expert historians.

*Victory in the Pacific* journeys from Pearl Harbor—where it all started for the Americans—to the islands of Saipan, Guam, Iwo Jima, and Tinian, where the *Enola Gay* departed to drop the first atomic bomb on Hiroshima. With exclusive access to the most intriguing battle sites, rich historical context from our Museum historians, seldomly seen archival materials from the Museum's digital collections, and hand-selected oral histories found nowhere else, this tour promises to be a once-in-a-lifetime opportunity.

We would be honored to have you as our guests as we experience sites rarely visited, accompanied by leading historians—Richard Frank and Jon Parshall, the foremost international authorities on World War II in the Pacific. These distinguished authors will guide you throughout the tour, providing insights and bringing the history of each location to life.

The tour culminates with a rare visit to the island of Iwo Jima. Now the site of a modern-day Japanese military base, the island is closed to the world, only open to foreign visitors one day per year. We will be there to commemorate the 74th anniversary of the Battle of Iwo Jima and remember the 6,821 Americans killed and 19,217 wounded during the bloody, relentless fighting.

Join us in March for an unforgettable journey that will take you to where World War II both started and ended, allowing you to experience the tragedy and triumph of America's road to Tokyo.

Sincerely,

Stephen J. Watson  
President & CEO, The National WWII Museum



Stephen J. Watson

## Contents

About our Travel Program.....	4
The 74th Anniversary of Iwo Jima.....	6
Hand-Selected Accommodations .....	8
Tour Highlights .....	10
Itinerary Map .....	12
Japanese occupied territory in 1945 .....	13
Tour Inclusions .....	15
Featured Speakers .....	17
Day-by-day Itinerary .....	18
From Our Collection .....	44
Post-Tour Extension Programs.....	46
Accommodations.....	50
About the Museum .....	60
Featured Journeys.....	62
Terms & Conditions of Sale.....	64
Travel Insurance .....	66
Reservation Form .....	67



## About our travel program



PHOTO PAGE 4: Japanese 200mm gun position on the *Battle for Peleliu* post-tour extension, 2018. PHOTO PAGE 5: Richard Frank and Jon Parshall on the deck of the USS *Missouri* on the 2018 *Victory in the Pacific* Tour. Courtesy of Frank Aymami.



## Travel with the authority on WWII educational travel

While many tour providers offer visits to key WWII sites, none provide such comprehensive, informed, and poignant journeys as The National WWII Museum. Named by *USA Today* as the #1 Best Place to Learn US Military History and designated by Congress as America's National WWII Museum, the Museum offers journeys designed and hosted by renowned WWII scholars, best-selling authors, local residents, historians, and WWII veterans. Along the way, these learned individuals share their knowledge and insights through lively discussions, engaging activities, and enlightening lectures.

The Museum's Educational Travel Team has spent months of preparation traveling to these fascinating destinations, ensuring your experience is unparalleled. There is truly no better time than now to visit these hallowed battlegrounds accompanied by such esteemed heroes and experts.



*Visit Iwo Jima, only accessible  
to Americans one day per year*

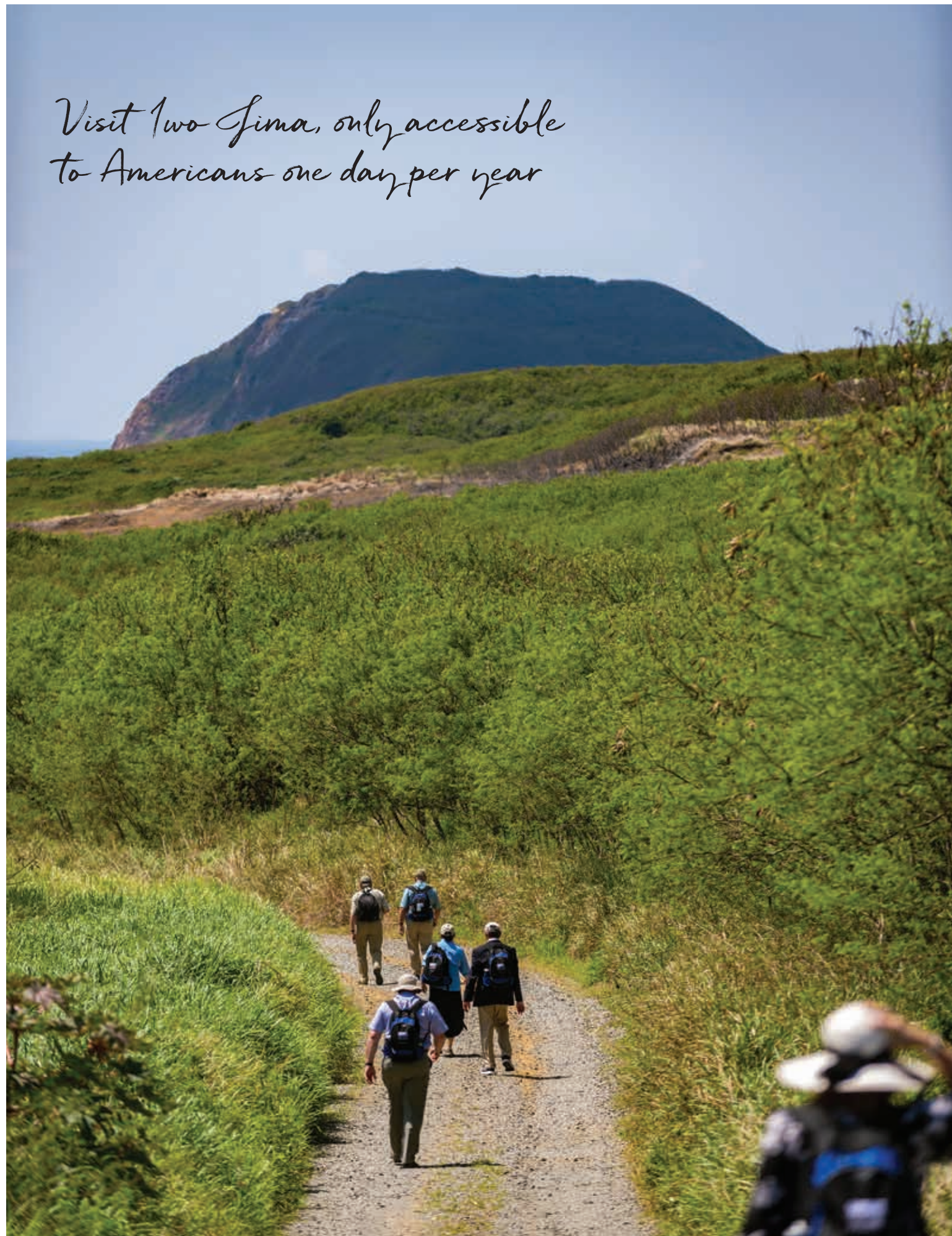


PHOTO PAGE 6: A view of Mt. Suribachi on the way to the Reunion Ceremony. Courtesy of Frank Aymami. PHOTO PAGE 7: Medal of Honor recipient Hershel "Woody" Williams, participating in the Reunion ceremony to mark the 73rd anniversary of the Battle of Iwo Jima in March 2018. Courtesy of Frank Aymami.



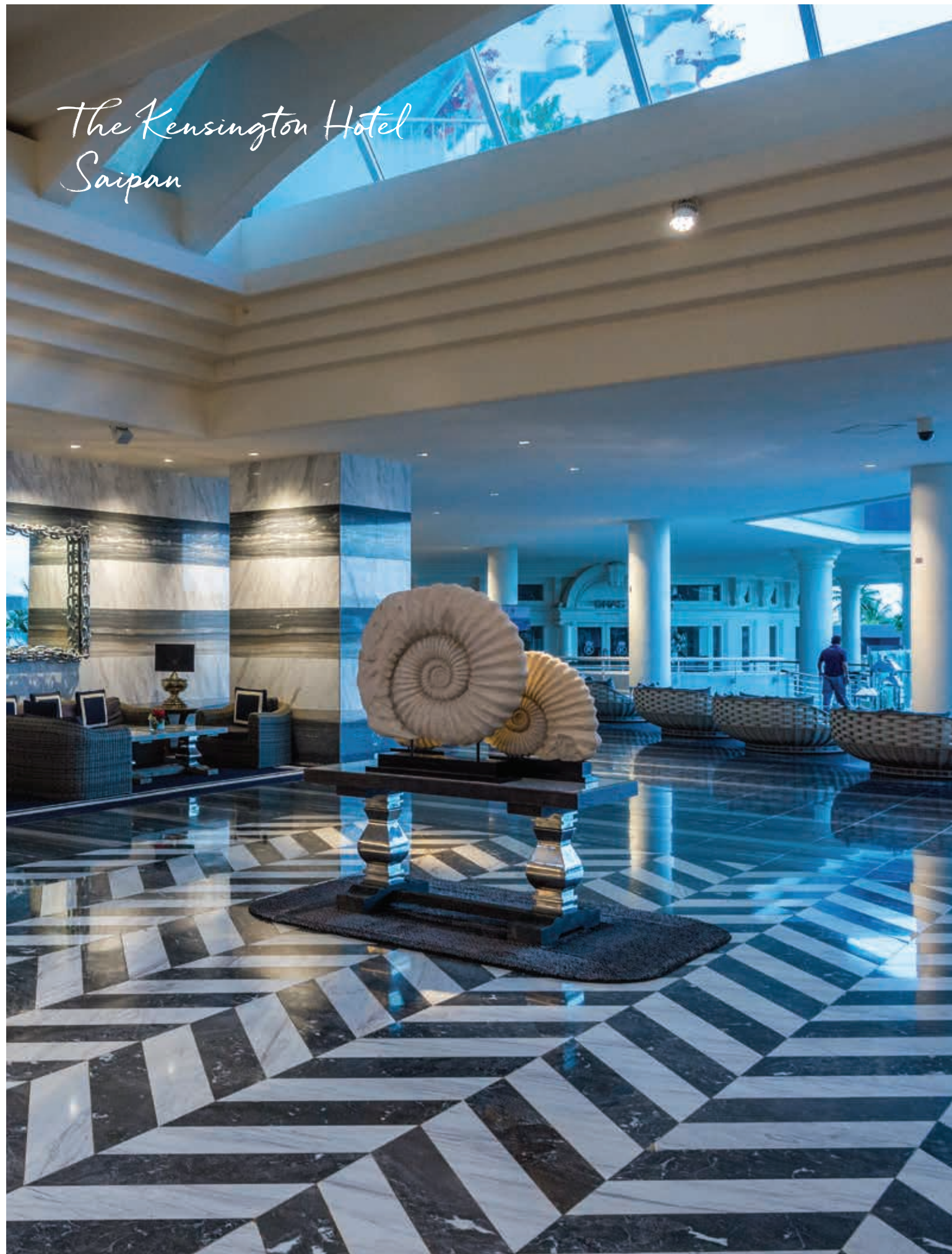
## *Take Part in the 74<sup>th</sup> Anniversary of Iwo Jima Commemoration*

On March 23, 2019, Iwo Jima will be open to visitors for the Reunion of Honor, the only day that non-military personnel can visit the island. The Reunion of Honor began in 1985 to commemorate the 40th anniversary of the Battle of Iwo Jima, and brings together American and Japanese veterans of the battle. At the first Reunion, a memorial was placed on the island that reads:

*On the 40th anniversary of the battle of Iwo Jima, American and Japanese veterans met again on these same sands, this time in peace and friendship. We commemorate our comrades, living and dead, who fought here with bravery and honor, and we pray together that our sacrifices on Iwo Jima will always be remembered and never be repeated.*

On the day of the Reunion, Japanese and American dignitaries lay wreaths next to the memorial. The Americans place theirs on the side facing the landing beaches, and the Japanese lay their wreaths on the inland side. A traditional Japanese water blessing concludes the formal event.





## *Relax and indulge at our hand-selected accommodations*

Setting the standard for luxury WWII-focused travel worldwide, The National WWII Museum delivers the best in comfort and service in the world's most significant WWII destinations. You can spend countless hours reading hotel reviews online—never really sure if you're making the best choice—or you can leave it up to The National WWII Museum's expert travel team to hand-select the very best the region has to offer. This attention to detail takes the stress and anxiety out of travel, and allows you to fully enjoy the unique and interesting perspectives on WWII history that are brought to you throughout your journey by our renowned scholars and experts.



## Tour Highlights



PHOTO PAGE 10: Marines pay their respects at the 73rd Reunion of Honor Ceremony on Iwo Jima on March 2018. *Courtesy of Frank Aymami.*

## Robust educational content & special guests

- Exclusive National WWII Museum Lecture Series, featuring expert authors and historians Richard Frank and Jon Parshall
- Presentation of veteran testimonials from the Museum's oral history collection throughout the journey
- Commemorative map book featuring archival images from the Museum's collection

## Comprehensive touring

- In Honolulu, admission to Valor in the Pacific, including visits to the USS *Arizona* Memorial, USS *Missouri*, and Pacific Aviation Museum
- In Guam, visits to Apra Harbor, Ga'an Point, 98th Marine and 77th Infantry Divisions Landing Beaches, and optional cultural touring
- In Saipan, touring of the landing beaches, including two partially submerged Sherman tanks; Aslito Airfield with the Japanese bomb magazine, artillery and tanks, air raid shelters; Suicide Cliffs at Marpo Point; the Last Command Post; and American Memorial Park
- In Tinian, see the loading pits for both atomic bombs and participate in comprehensive touring of North Field, including the Japanese fuel bunker, memorial square and the administrative building, LVT landing craft, the South Island Suicide Cliff and caves, and US Marine Corps landing site at White Beach

## Special events and exclusive access:

- Attendance at the 74th Iwo Jima Reunion of Honor commemoration on the island of Iwoto, including the option to ascend Mt. Suribachi and walk on the landing beaches
- Scenic flyover of Tinian with aerial perspectives of North Field and Suicide Cliffs
- Exclusive half-day Iwo Jima Symposium at Dusit Thani Resort

## Memorable culinary experiences

- Welcome Reception & Dinner on the Diamond Lawn at the Moana Surfrider Resort in Honolulu
- Comprehensive, all-inclusive dining package at Kensington Hotel Saipan
- Farewell Reception and Dinner at the Dusit Thani Resort Guam

Book by December 28, 2018, and save \$2,000 per person and take advantage of exceptional values. Contact us for further information.

[ww2museumtours.org](http://ww2museumtours.org) • 1-877-813-3329 X 257



## Program Itinerary



## Japanese Occupied Territory 1945

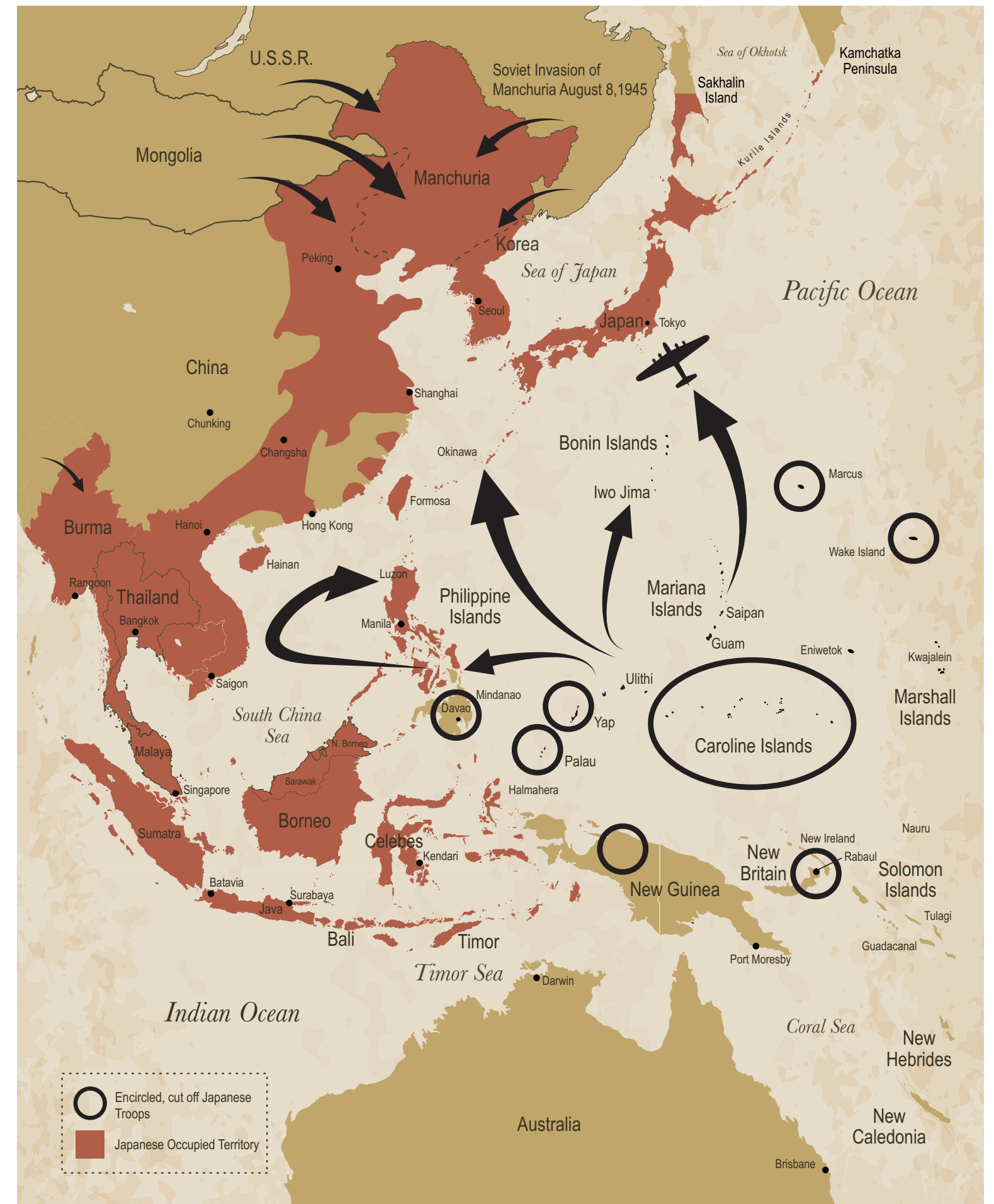






PHOTO PAGE 14: Private sunset reception and Welcome Dinner at the Moana Surfrider Hotel, Waikiki Beach, Honolulu, HI. Courtesy of Frank Aymami.

## Tour Inclusions

### Luxurious resorts

- Two nights accommodations at the historic, five-star Westin Moana Surfrider Hotel in Honolulu
- Three nights accommodations at the five-star Kensington Hotel Saipan
- Four nights accommodations at the five-star Dusit Thani Hotel Guam

### All-inclusive flights\*

- Roundtrip economy-class air on scheduled United Airlines flights between: Los Angeles and Honolulu, Honolulu and Guam, and Guam and Los Angeles (via Honolulu)
- Roundtrip, private chartered air between Guam and Iwo Jima, Guam and Saipan, and Saipan and Tinian

### Museum amenities and services

- 9 Breakfasts, 5 Lunches, 4 Receptions, 4 Dinners
- Free-flow beer, wine, spirits, coffee, water, tea, and soft drinks at all included meals and receptions
- Personal listening devices on all included touring
- Entrance fees to all sites, museums, and attractions included in the itinerary
- VIP access to sites not offered on other tours
- Video oral history presentations from the Museum's Collection
- Private, air-conditioned motor coach transportation, including bottled water and refreshing cloths on excursions
- All airport transportation throughout program itinerary, including arrival transfer (Honolulu) and departure transfer (Guam)
- Included gratuities to local guides, drivers, porters, and included meal service
- Expert Museum Historian-/Curator-led battlefield tours
- Informative map book, including battlefield maps and archival images to be used throughout your journey
- Personalized luggage tags and customized name badge
- Keepsake journal and pen to document your journey

### BOOKING EARLY HAS ITS REWARDS

Book by December 28, 2018, to take advantage of exceptional values including:

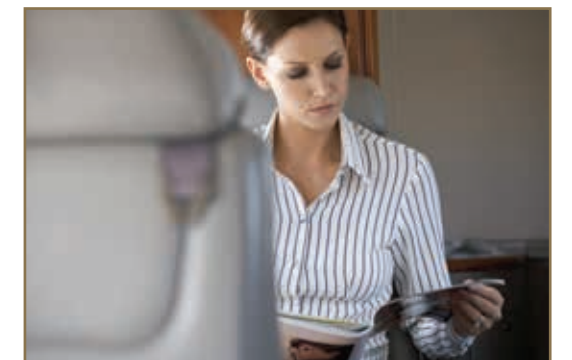
- Savings of \$2,000 per couple\*
- Complimentary flights from Los Angeles and throughout the entire tour\*



\*Roundtrip, economy-class air aboard scheduled United Airlines flights from Los Angeles (LAX) when reservations are confirmed by December 28, 2018. \$329 taxes and fees additional per person.

### Fly in even more comfort

Guests may opt to upgrade to premium economy or business class on identified group flights, at an additional cost. Limited Availability. *Please contact The National WWII Museum for more information at 1-877-813-3329 X 325.*





Expedition boats  
on Palau

## Our Featured Speakers

World-renowned experts on the War in the Pacific



### Richard Frank, Author & Historian

Richard Frank is an international expert on the War in the Pacific and a veteran of the Vietnam War. After graduating from the University of Missouri, he was commissioned in the United States Army, where he served for nearly four years, including a tour of duty in Vietnam as an aerorifle platoon leader with the 101st Airborne Division. He completed studies at Georgetown University Law Center in Washington, DC. Soon afterward, he began research on his first book,

*Guadalcanal: The Definitive Account of the Landmark Campaign*, which was published in 1990 and won the United States Marine Corps' General Wallace M. Greene Award. Frank's other publications include *Downfall: The End of the Imperial Japanese Empire*, which won the 2000 Harry S. Truman Book Award, and *MacArthur*. He has appeared numerous times on or consulted for television and radio programs, and was also a historical consultant and appeared as a key interviewee in the HBO miniseries *The Pacific*.

He is currently working on a narrative history trilogy about the Asian-Pacific War. Frank also currently sits on the Museum's Presidential Counselors advisory board.



### Jonathan Parshall, Author & Historian

Jonathan Parshall saw his interest in the Imperial Japanese Navy develop early in his childhood. As an adult, that passion led him to create the foremost website devoted to the Imperial Navy: [combinedfleet.com](http://combinedfleet.com), which he founded in 1995. Parshall's book *Shattered Sword: The Untold Story of the Battle of Midway*, which he co-authored with Anthony Tully, is seen as the definitive account of that pivotal battle in the Pacific. He has written for the Naval War College

Review, the US Naval Institute's *Proceedings* and *Naval History* magazines, *World War II* magazine, *Wartime* (the journal of the Australian War Memorial), *Flypast* magazine, the *Sankei Shimbun*, and several overseas aviation publications. He has also illustrated numerous books on the Pacific War (including his friend Richard Frank's *MacArthur*). Parshall is an adjunct lecturer for the US Naval War College, and has appeared on the History Channel, Discovery Channel, and the BBC. A graduate of Carleton College and the Carlson School of Management, he is currently working on a history of the year 1942, focusing on how the Allies transformed themselves to meet their respective challenges during that year. He also brings an intimate knowledge of Japan to the post-tour extension, having lived in Hiroshima with his wife in the 1990s.





## VICTORY IN THE PACIFIC

Pearl Harbor, Saipan, Tinian, Guam, and

*The 74<sup>th</sup> Commemoration of Iwo Jima*

— March 15 – 25, 2019 —

Featuring Two Optional Post-Tour Extensions

*The Road to Tokyo and The Battle for Peleliu*

\$14,999 per person based on double occupancy

\$20,999 single occupancy

*When booked by December 28, 2018. \$329 per person taxes and fees are additional.*

Aerial view of the Northern Mariana Islands, a UNESCO World Heritage Site



## OPTIONAL PRE-TOUR EXTENSION

# Remembering the Ultimate Sacrifice

Honolulu • MARCH 14 – 15, 2019

**\$999 per person based on double occupancy • \$1,399 single occupancy**

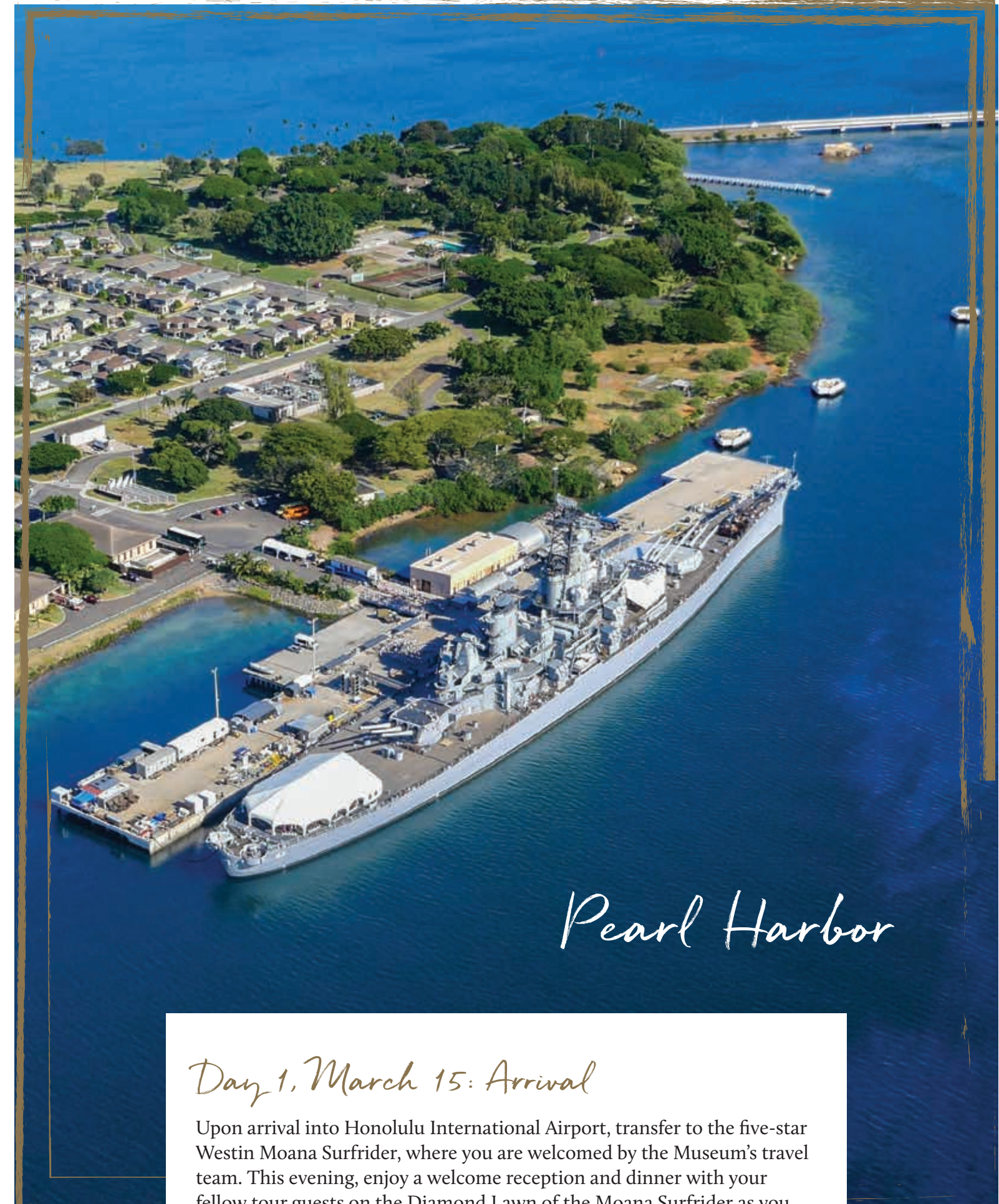
*When booked by December 28, 2018. Price does not include \$59 per person in taxes & fees.*

Arrive a day early to experience a special visit to the Defense POW/MIA Accounting Agency (DPAA) Laboratory at Joint Base Pearl Harbor-Hickam. At the laboratory, historical research and DNA technology combine in an effort to locate and identify missing service men and women throughout the world. Special projects include identifying those killed in action on Tarawa and during the Korean conflict. After an included lunch, pay respects to those who fell in the Pacific at The National Memorial Cemetery of the Pacific at Punchbowl crater. The cemetery opened to the public on July 19, 1949, with services for five war dead: an unknown serviceman, two Marines, an Army lieutenant, and one civilian—noted war correspondent Ernie Pyle. Eventually, over 13,000 soldiers and sailors who died during World War II would be laid to rest in the Punchbowl.

*Accommodations: Westin Moana Surfrider (B, L)*



PHOTO: The National Memorial Cemetery of the Pacific at Punchbowl crater



## Day 1, March 15: Arrival

Upon arrival into Honolulu International Airport, transfer to the five-star Westin Moana Surfrider, where you are welcomed by the Museum's travel team. This evening, enjoy a welcome reception and dinner with your fellow tour guests on the Diamond Lawn of the Moana Surfrider as you watch a lovely island sunset.

*Accommodations: Westin Moana Surfrider (R, D)*





## Day 2, March 16: USS Missouri, Pacific Aviation Museum, and Valor in the Pacific

Begin your exploration of the War in the Pacific where it all ended, on the USS *Missouri*, site of the formal surrender of the Japanese Empire to the Allied powers. Next, visit the Pacific Aviation Museum Pearl Harbor, an internationally recognized aviation museum on Ford Island that educates about and preserves aviation history while honoring aviators and their support personnel who defended freedom in the Pacific region. After an included lunch, spend the afternoon at the very place where a Japanese attack brought the country into the war. At the USS *Arizona* Memorial, pay tribute to the 1,177 men who were killed when the ship's forward magazine exploded causing the ship to sink in a matter of minutes. Also visit the USS *Bowfin* (SS-287), a fleet attack submarine that fought in the Pacific during World War II and helped to make famous the term "Silent Service." *Bowfin* was launched on December 7, 1942, exactly one year after the attack on Pearl Harbor. She was nicknamed Pearl Harbor Avenger, so it's fitting that Pearl Harbor is her permanent home. The evening is free to enjoy Waikiki's many shops and restaurants.

Accommodations: Westin Moana Surfrider (B, L)



## From Our Collection Japanese Surrender Card

Frank Borrell enlisted in the Navy in October 1941. In June 1944 he became a plank holder on the USS *Missouri* (BB-63), serving as a Gunner's Mate Second Class. He witnessed the formal surrender of the Japanese forces to the Allied powers, and was given this commemorative card. The card was printed only for those who were present at this historic event.

Gift of Frank Borrell, 2010.485.013



PHOTO PAGE 22: USS *Missouri*. Pearl Harbor, Hawaii. Courtesy of Frank Aymami. PAGE 23 TOP PHOTO: USS *Arizona* Memorial, Pearl Harbor, Hawaii. Courtesy of Frank Aymami.





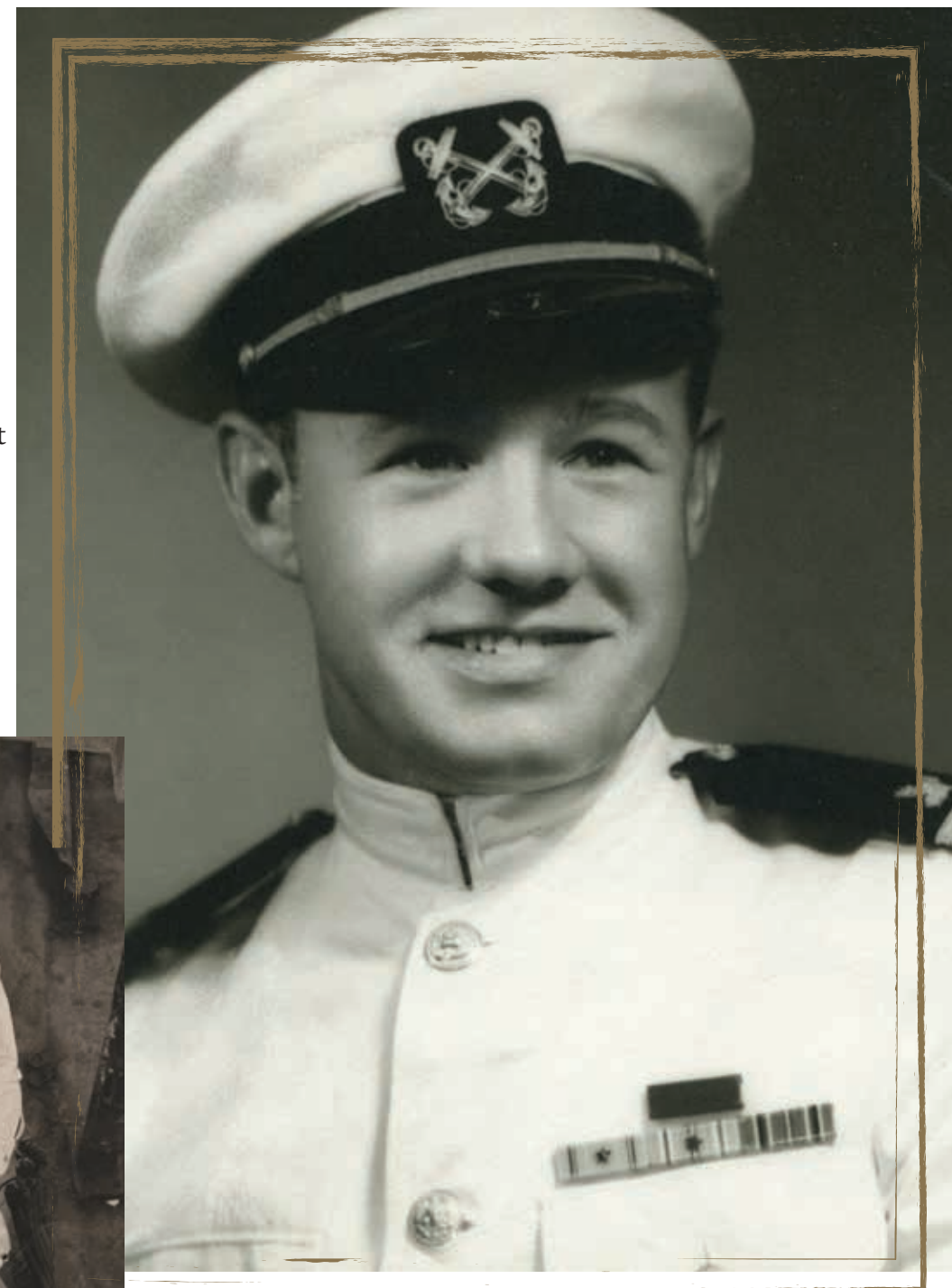
USS Arizona (BB-39) settles on the bottom of Pearl Harbor along battleship row

## THROUGH THEIR EYES

*Remembering our fallen heroes*

### *Roy "Swede" Boreen*

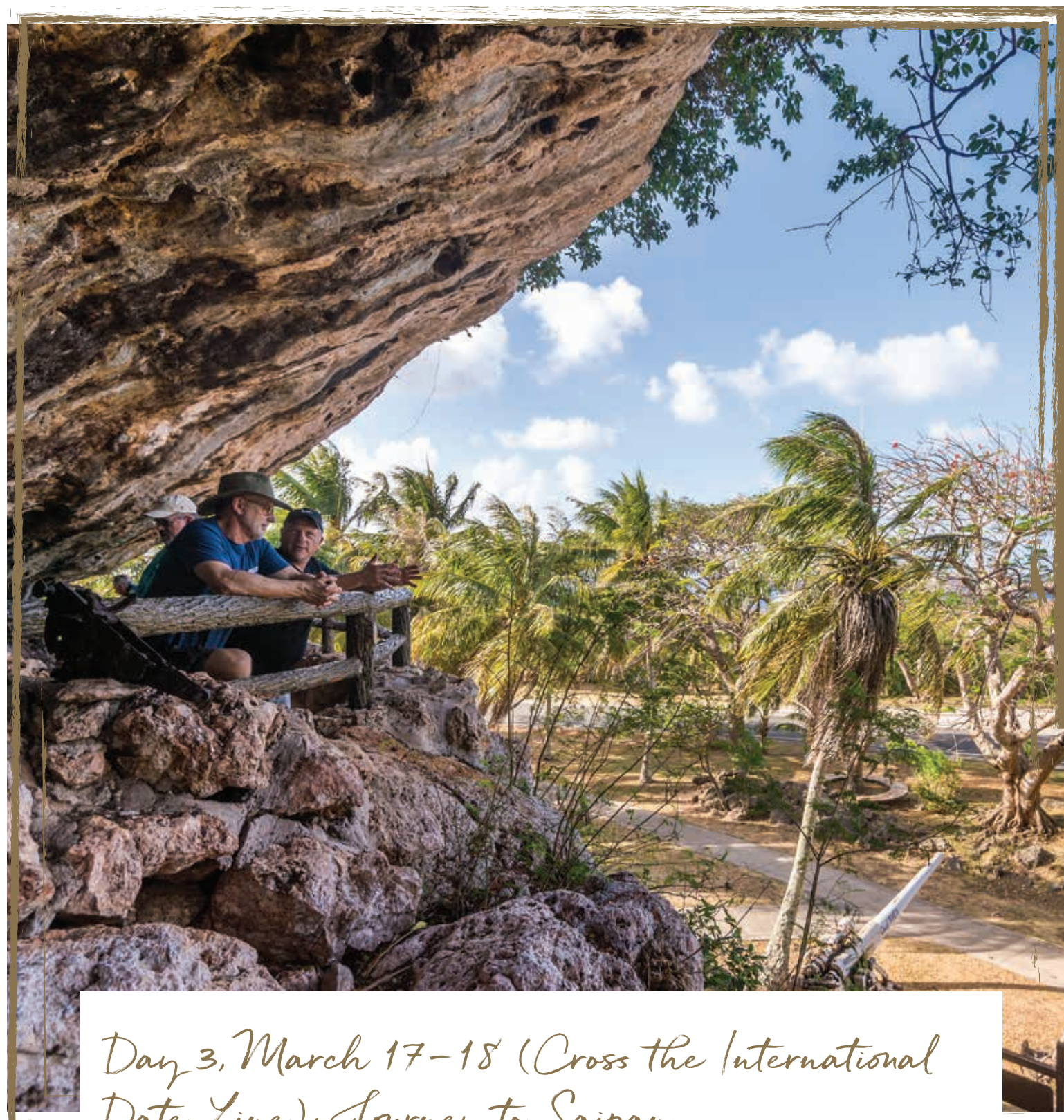
Roy "Swede" Boreen was born in Minneapolis, Minnesota, to Swedish immigrants. His father, a veteran of the Swedish Navy, openly wished that one of his sons would continue the tradition of military service. With that in mind, Boreen joined the US Navy on August 3, 1938. After completing training, he was assigned to the battleship USS *Oklahoma* (BB-37), which was docked in Pearl Harbor, Hawaii, on December 7, 1941.



On that fateful morning, Boreen awoke before 0700, ate breakfast, and reported to the disbursement office. When the call came for general quarters, he made his way to his station in the powder room of the #3 turret. When he arrived, there was no one there so he began to make his way to the main deck. Glancing through a large porthole on his way, he noticed a Japanese "Kate" torpedo plane right over the ship, and realized that this was not a drill. He began to seal the watertight doors when a torpedo hit the *Oklahoma*, ripping into the adjacent compartment.

Boreen was immediately covered in oil, and the compartment that he was in began to fill with water. He climbed out of an open hatch above him into the next level, and eventually made his way to the main deck, arriving just in time to see the USS *Arizona* (BB-39) explode. As a Japanese "Zero" began to make a pass down Battleship Row, Boreen dove into the water and hid beneath the mooring camel, which separated the *Oklahoma* from the USS *Maryland* (BB-46). The 21-jewel Bulova watch he was wearing stopped at the exact second he hit the water at 8:04 a.m., and he later donated it to The National WWII Museum, where it is displayed in the new exhibit, *The Arsenal of Democracy: The Herman and George R. Brown Salute to the Home Front*.





## Day 3, March 17-18 (Cross the International Date Line): Journey to Saipan

After a relaxing morning at leisure, fly to Saipan, where a ferocious battle waged for over three weeks from June 15 to July 9, 1944. Granted to Japan after World War I, the island was home to the Japanese forces that attacked Guam on December 8, 1941. At the same time the Allies secured Rome and were fighting in Normandy in 1944, American troops had advanced within striking distance of Saipan. If captured, Saipan and the neighboring island of Tinian offered airfields from which B-29s could attack the Japanese home islands. Once ashore on Saipan, Americans faced challenges in Saipan's formidable geography, a significant civilian population, and Japan's willingness to fight to the last man.

*Accommodations: The Kensington Hotel Saipan (B, D)*



*Saipan is about 1,300 miles south of the Japanese home islands. It is a small, pistol-shaped island about five miles wide and 18 miles long, which had tremendous strategic value for the United States.*

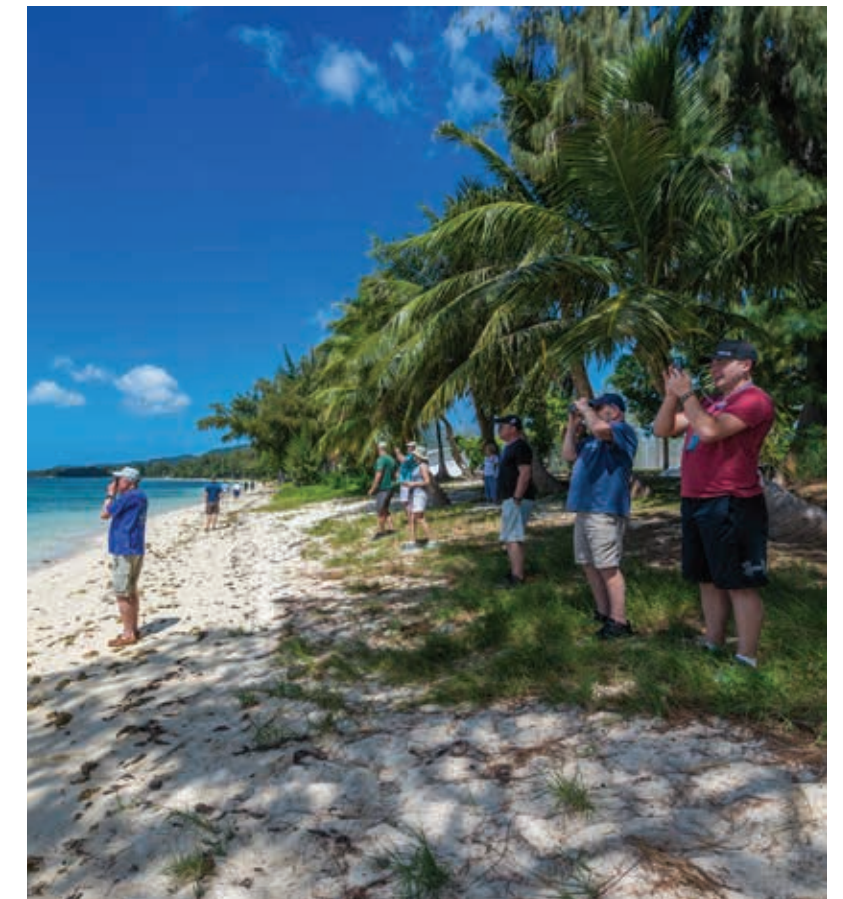
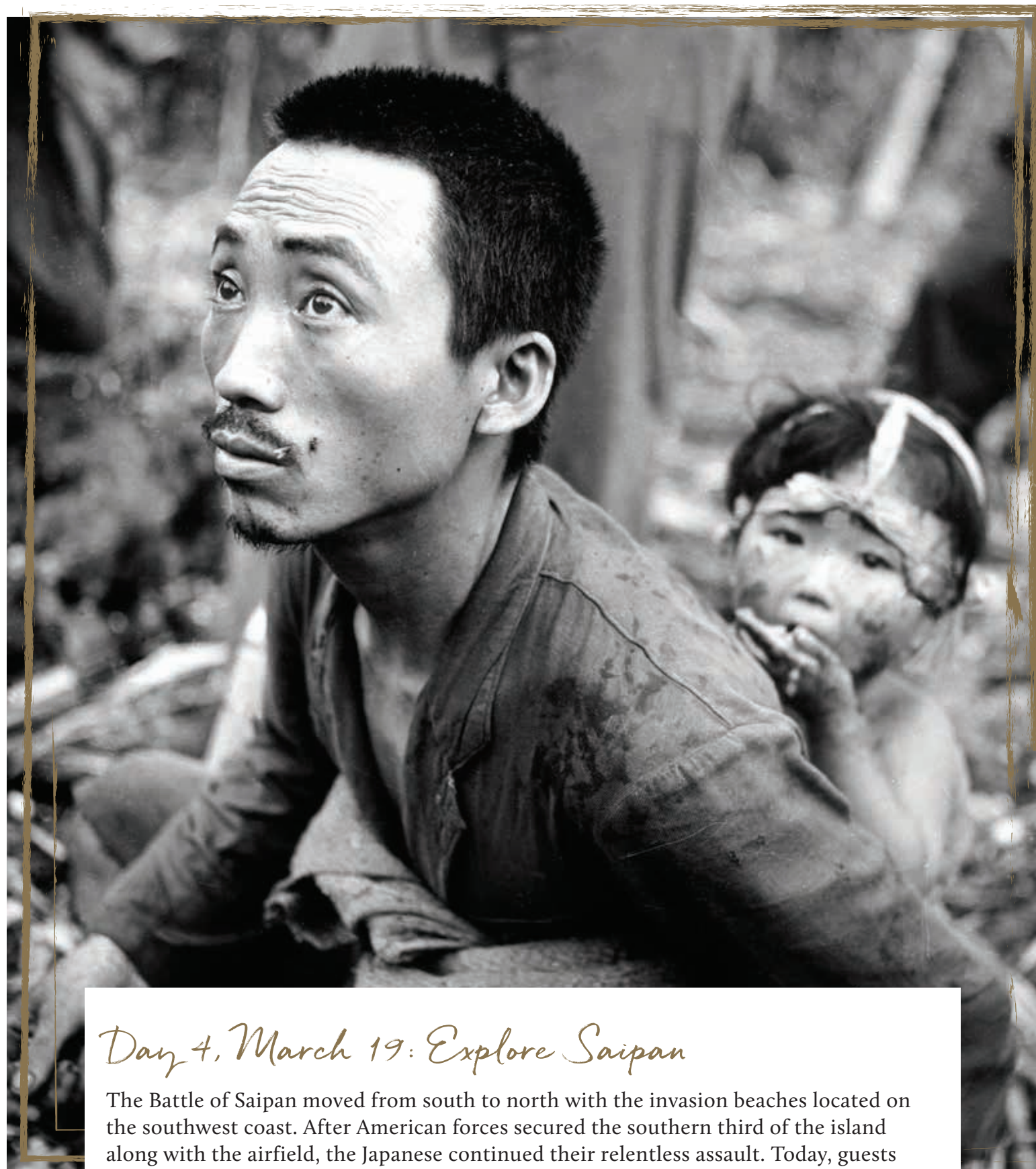


PHOTO PAGE 26: Last Command Post, Saipan. *Courtesy of Frank Aymami.* PAGE 27 TOP PHOTO: Marines crawling on the beach in Saipan; PAGE 27 BOTTOM PHOTO: Tourists on Kilili Beach, Saipan, March 2018. *Courtesy of Frank Aymami.*





### *Day 4, March 19: Explore Saipan*

The Battle of Saipan moved from south to north with the invasion beaches located on the southwest coast. After American forces secured the southern third of the island along with the airfield, the Japanese continued their relentless assault. Today, guests will stand on the landing beaches, explore the bomb magazine used to supply the planes attacking Guam on December 8, 1941, and participate in an incredibly moving visit to the cliffs where thousands of Japanese civilians and soldiers committed suicide upon realizing that Saipan was lost. Tour stops also include a scenic drive through Purple Heart Ridge, Suicide Cliffs, American Memorial Park, the remains of Aslito Airfield, Kili Beach, Last Command Post, and Tank Beach.

*Accommodations: The Kensington Hotel Saipan (B, L, D)*

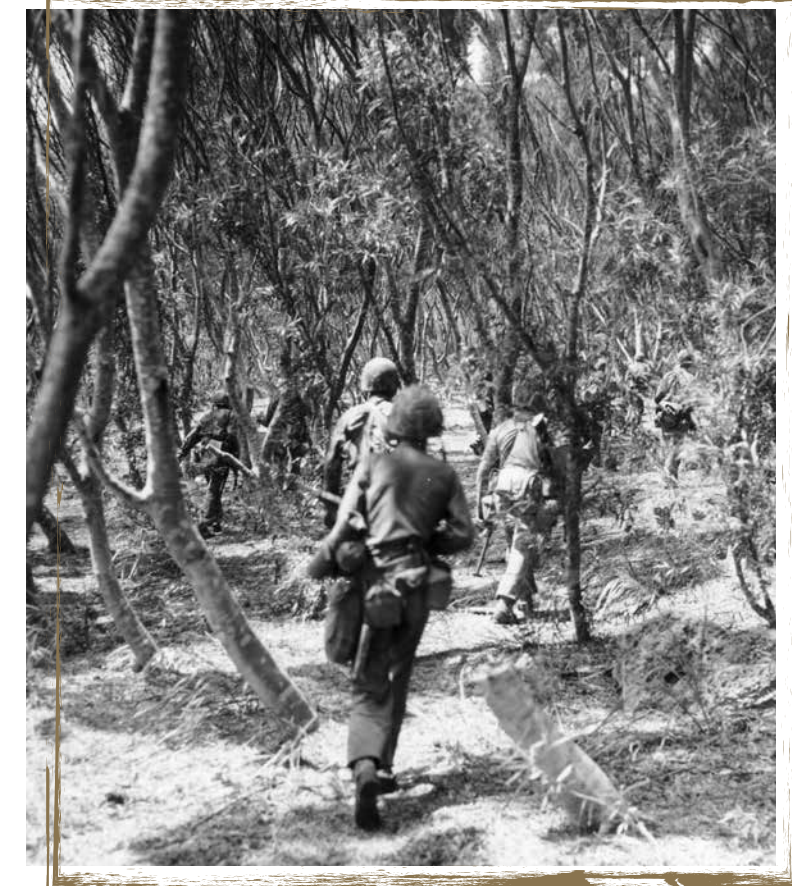


PHOTO PAGE 28: A father sits on the ground with his wounded child after the battle between US and Japanese forces for control of Saipan, Northern Marianas Island—July 1944. *Courtesy W. Eugene Smith/The LIFE Picture Collection/Getty Images.* PAGE 29 TOP: Suicide Cliff, Saipan. *Courtesy Frank Aymami.* PAGE 29 BOTTOM LEFT: Remains of Aslito Airfield. *Courtesy Frank Aymami.* PAGE 29 BOTTOM RIGHT: The 6th Regiment working its way forward, June 22, 1944.





## THROUGH THEIR EYES

*Remembering our fallen heroes*

### "Iron Mike" Mervosh

As soon as the Japanese attacked Pearl Harbor, Michael D. Mervosh decided to enlist in the Marine Corps to fight for his country. As soon as he turned 18 in September of 1942 and graduated high school, Mervosh entered boot camp training at Parris Island, South Carolina. Upon completing Marine Corps Boot Camp, Mervosh went to Camp Lejeune, North Carolina, for infantry training and to learn how to operate a machine gun.

Mervosh and his training battalion eventually made it to Camp Pendleton in San Diego, California, where he was assigned to Charlie Company, 24th Marines, 4th Marine Division. His division would be the first in the Marine Corps to go straight from training in the United States directly into combat. Mervosh entered combat in the Marshall Islands, fighting on the islands of Roi and Namur. Following the battle, the 4th Marine Division then went to Maui for rest and resupply before heading into combat again.

On June 15, 1944, Mervosh made his way ashore on the island of Saipan under intense enemy fire. Within the first few hours of the fighting, Mervosh and his fellow Marines received a blow to their morale when their battalion commander was killed, but they kept up the fight. Faced with little drinkable water and fighting disease on the island, casualties began to mount. Unlike any of the previous battles they had fought, the Marines also encountered a number of civilians on Saipan. Upon reaching the northern side of the island at Marpi Point, now known as Suicide Cliff, Mervosh witnessed men, women, and children jumping to their deaths terrified by Japanese propaganda that warned they would be tortured and killed by US troops. That moment was one that would be etched forever in his brain.

Mervosh's combat was not over. He took part in conquering the neighboring island of Tinian, enabling the B-29 Superfortress bombers to utilize its airfields to bomb mainland Japan, and after his fighting at Saipan and Tinian, Mervosh began to see himself as a true combat veteran.

Little did he know that in February 1945 he would face the most intense combat that he would see during his 35-year career in the Marine Corps on Iwo Jima. "Iron Mike" Mervosh saw combat in World War II, Korea, and Vietnam. During his time in the Marines, he served in every enlisted rank from Private to Sergeant Major. He served in five different Marine Divisions, spent time as a drill instructor at Parris Island, South Carolina, did two tours of recruiting duty, and two tours on the drill field. His final assignment was the Fleet Marine Force, Pacific Sergeant Major. Upon his retirement on September 1, 1977, Mervosh was the most senior enlisted man in all of the Armed Forces.

PHOTO PAGE 30: A member of a Marine patrol on Saipan found this family of Japanese hiding in a hillside cave. The mother, four children, and a dog took shelter from the fierce fighting in the area, June 21, 1944. Courtesy American Photo Archive / Alamy Stock Photo







## Day 5, March 20: Tinian and the atomic bomb

The island of Tinian is just minutes away from Saipan by air. After arriving at Tinian International Airport by privately chartered aircraft, embark on a tour of iconic North Field. The airfield today is a mixture of modern monuments and memorials with buildings and vehicles in varying states of preservation and decay. Explore a massive Japanese fuel storage facility where damaged oil drums still remain today. Stand above the bomb pits from which “Little Boy” and “Fat Man” were loaded onto the B-29s *Enola Gay* and *Bockscar*. Walk the surprisingly narrow White Beach where the US Marine Corps landed to secure the island where debris from the battle remains today. Upon departure from Tinian en route to Saipan, your plane will embark on a scenic flyover of Tinian and the places you visited, giving you an aerial perspective of the day’s touring.

*Accommodations: The Kensington Hotel Saipan (B, L, D)*



*From the Museum's collection*

Watch of Colonel Paul W. Tibbets Jr.

This watch was worn by Colonel Paul W. Tibbets Jr. while at the controls of the *Enola Gay* on August 6, 1945, during the atomic bombing of Hiroshima. The watch was later refitted with a custom band commemorating the historic event.

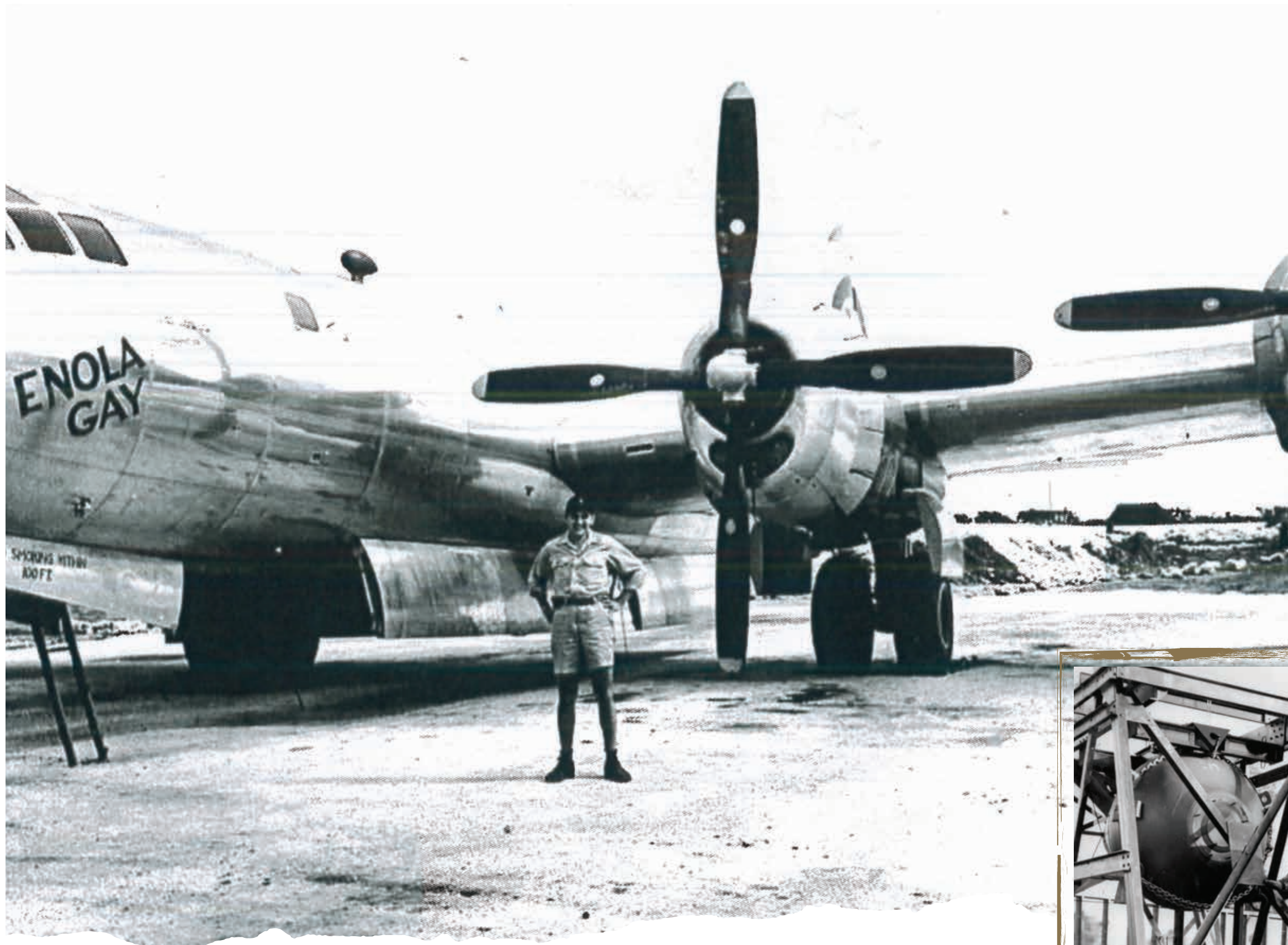
*Gift of Stephanie Mudge, 2008.069.001*



PHOTO PAGE 32: White Beach, Tinian. *Courtesy of Frank Aymami.* PAGE 33 TOP: Runway Able, Tinian. *Courtesy of Frank Aymami.*

PAGE 33 BOTTOM LEFT: Col. Paul W. Tibbets Jr., pilot of the *Enola Gay*, the plane that dropped the atomic bomb on Hiroshima on August 6, 1945. Army Air Forces.





## Eugene DiSabatino

Eugene DiSabatino joined the US Army in 1943. After completing basic training, he was assigned to attend Massachusetts Institute of Technology (MIT) for civil engineer training, and then was sent to New York University (NYU) for additional training. While at NYU, he was selected by Army officers for a special assignment in Los Alamos, New Mexico.

Upon arrival at Los Alamos, DiSabatino learned that he was part of the very secretive Manhattan Project. He was informed that he was restricted to that base, and that he would wear civilian clothes while living in officer quarters. Having to disguise himself as a civilian caused tension with some soldiers who thought he was a draft dodger. He was told to not salute, ignore Army protocol, and pretend to be a civilian when around others who may be observing his actions. The projects that DiSabatino worked on were so secretive that he had people working under him who had no idea what they were working on.

While at Los Alamos, DiSabatino worked under Admiral Frederick Ashworth on two major projects. The first was to develop ballistic tables for use on the Norden bombsight at 30,000 feet by a B-29 Superfortress carrying a payload of five tons. DiSabatino's second task was to develop an assembly process for

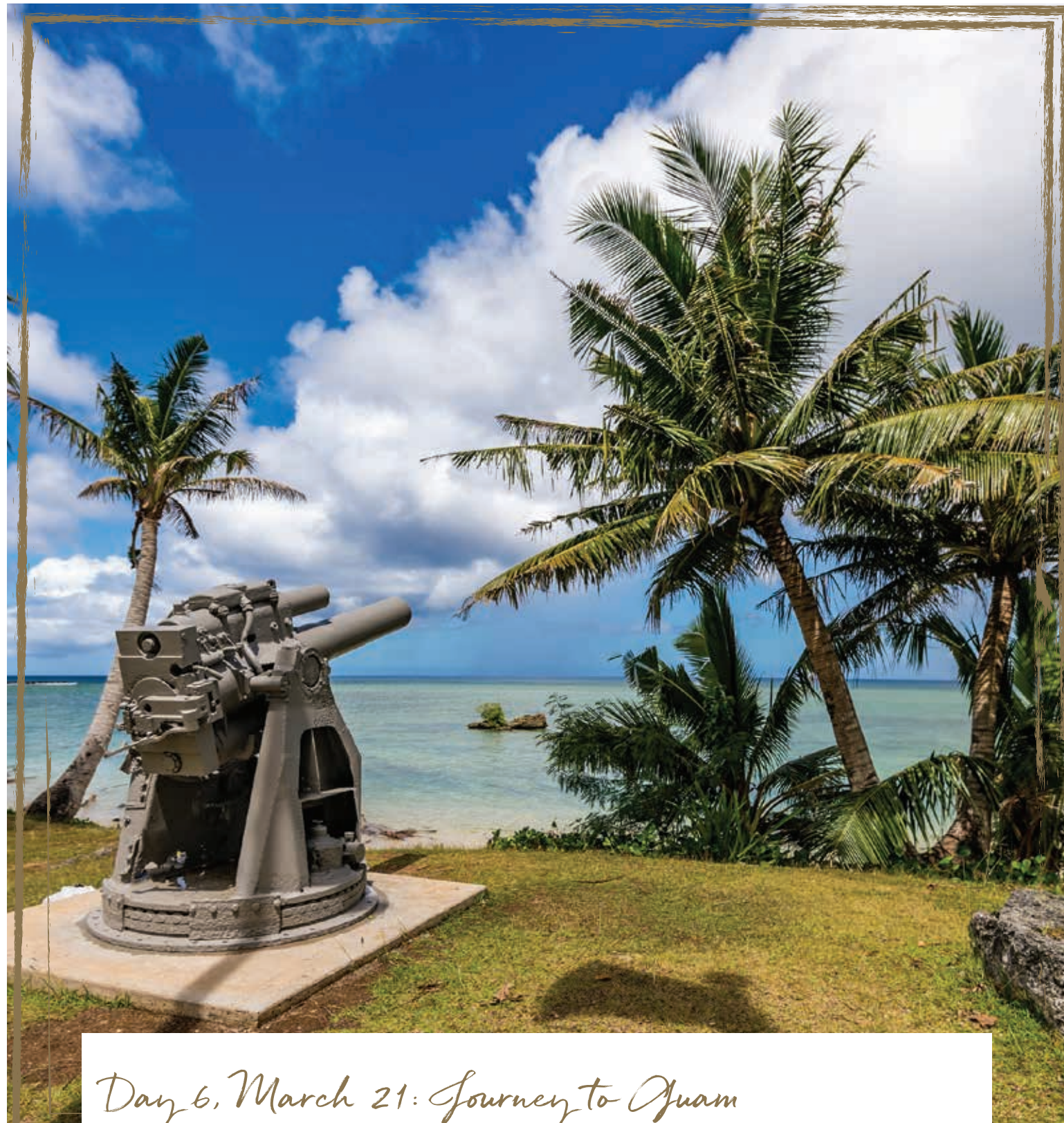
loading an atomic bomb aboard a B-29, fusing it in flight, and then deploying it over a target. After completing this work, he was sent to two top-secret Air Force test sites, one at Wendover, Utah, and the other at Salton Sea, California, with the 393rd Bombardment Squadron. After completing testing, DiSabatino was shipped immediately to Tinian for assisting with the loading of the atomic bomb "Fat Man" into the B-29 Bomber nicknamed *Bockscar*. To his knowledge, he was the last person to lay hands on the bomb before it left Tinian, bound for Nagasaki on August 9, 1945.



PHOTO PAGE 34: Manhattan Project Weapons Specialist Eugene DiSabatino stands in front of the B-29 *Enola Gay* on Tinian. PHOTO PAGE 35: "Fat Man" Shake test, Manhattan Project. Courtesy Science History Images/ Alamy Stock Photo.

THROUGH THEIR EYES  
*Remembering our fallen heroes*





## Day 6, March 21: Journey to Guam

After a relaxing morning on Saipan with optional leisure excursions to swim at Kilili Beach or visit the museum at American Memorial Park, board a short flight this afternoon to Guam. A US territory since the end of the Spanish-American War in 1898, Guam was attacked by the Japanese on December 8, 1941—technically the same day as Pearl Harbor, due to its location on the other side of the International Date Line. The Japanese occupied Guam until August 1944, when the island was liberated by the US 3rd Marine Division and 77th Infantry Division. This evening, check into Dusit Thani Resort before dinner at leisure.

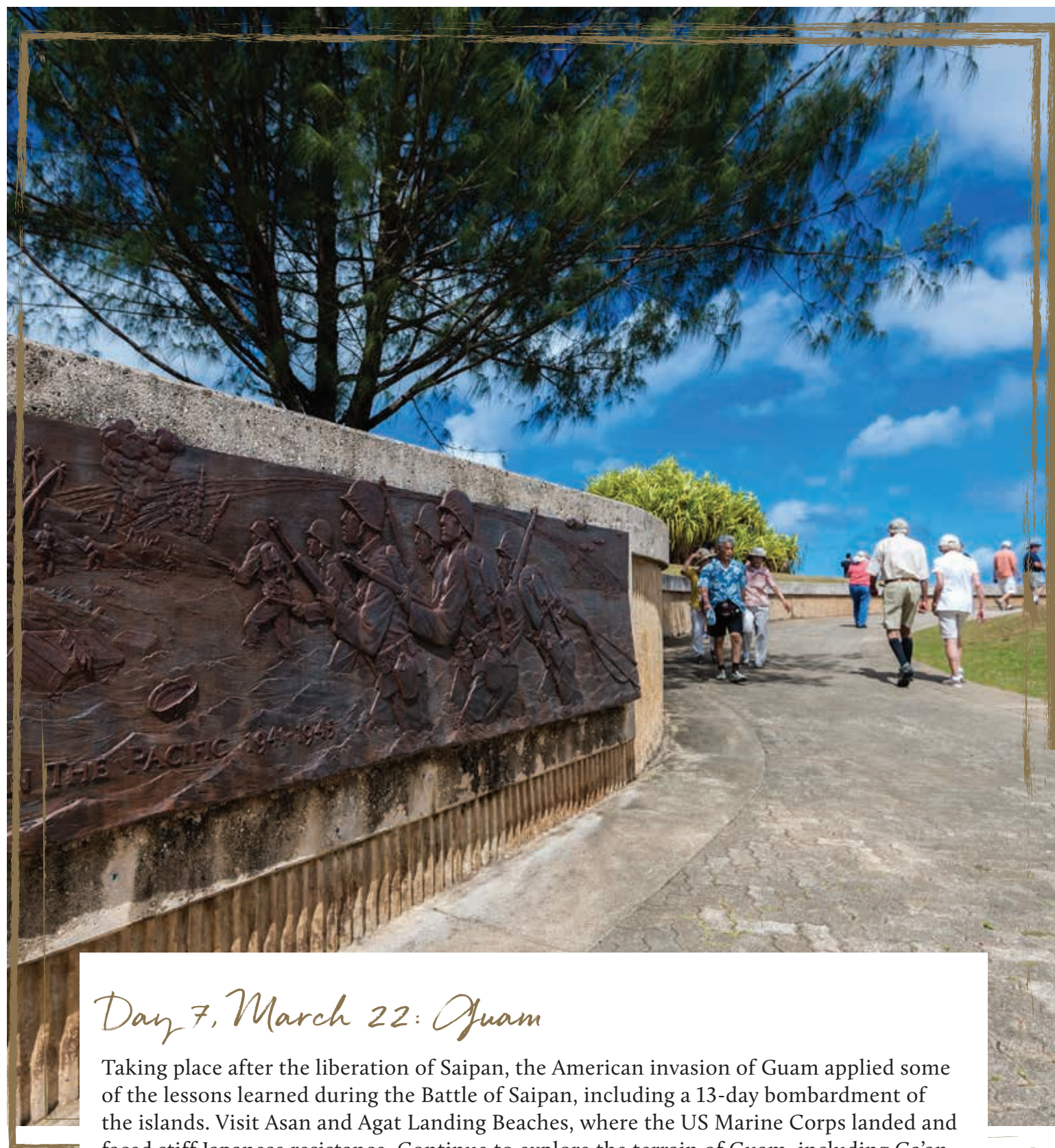
*Accommodations: Dusit Thani Resort (B, L)*



*In July 1944, US forces liberated the island of Guam after weeks of fierce fighting, leading to over 7,000 American casualties and over 18,000 Japanese killed.*

PHOTO PAGE 36: Ga'an Point, Guam. *Courtesy of Frank Aymami.* PAGE 37 TOP PHOTO: Company B 305th Infantry Regiment of the 77th Infantry Division advance through a valley on Guam. PAGE 37 PHOTO BOTTOM LEFT: Agat Beach, Guam. *Courtesy of Frank Aymami.*





## Day 7, March 22: Guam

Taking place after the liberation of Saipan, the American invasion of Guam applied some of the lessons learned during the Battle of Saipan, including a 13-day bombardment of the islands. Visit Asan and Agat Landing Beaches, where the US Marine Corps landed and faced stiff Japanese resistance. Continue to explore the terrain of Guam, including Ga'an Point overlooking Apra Harbor, which is home to monuments dedicated to the 1,880 US servicemen who lost their lives during the defense of Guam, to the liberators of Guam who retook the island in 1944, and to the 1,170 native Chamorro soldiers and 14,721 locals that perished during this period. This evening, an engaging panel discussion with museum historians and featured speakers Richard Frank and Jon Parshall will illuminate the significance of our visit tomorrow to the Island of Iwo Jima and the 74th Reunion of Honor Ceremony.

*Accommodations: Dusit Thani Resort (B, R)*

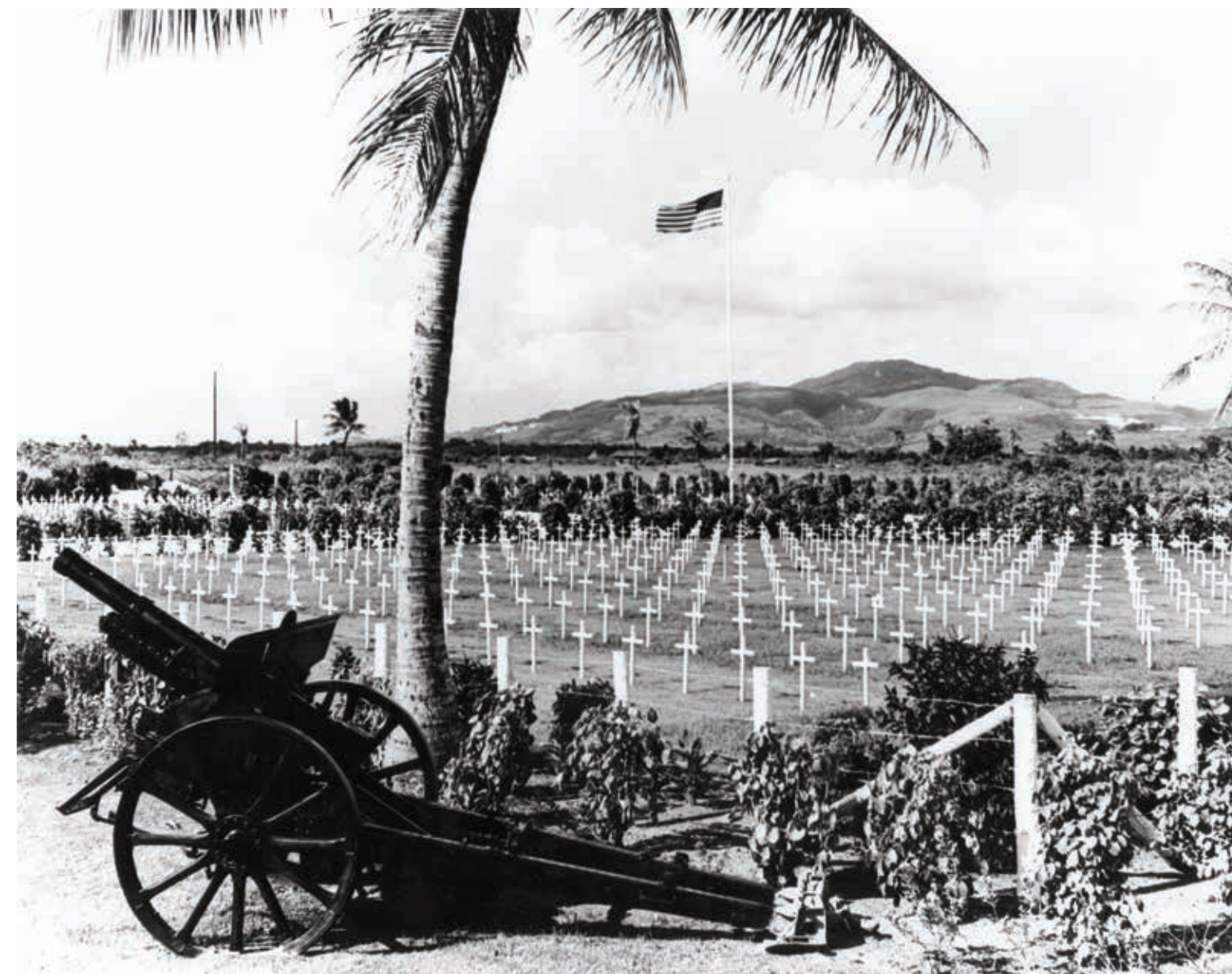


PHOTO PAGE 38: Asan Bay Overlook, Guam. *Courtesy of Frank Aymami.* PAGE 39 TOP PHOTO: White crosses and Stars of David line the cemetery of the 27th Infantry Division on Saipan. PAGE 39 BOTTOM PHOTO: Asan Beach, Guam. *Courtesy of Frank Aymami.*





## Day 8, March 23: The 74<sup>th</sup> Commemoration of Iwo Jima

Early this morning, board a privately chartered flight to Iwo Jima to take part in the 74th anniversary commemorations on the island. The Island of Iwo Jima, now named Iwo To, is open only once per year for this very special Reunion of Honor. On arrival, guests may take the opportunity to hike to the top of Mt. Suribachi, where the iconic flag-raising photo was taken, and attend a joint American and Japanese Water Blessing Ceremony. With the Museum's veteran guests, explore the volcanic rock beaches, the unique rugged terrain of the island, and reflect on the extreme American loss in this battle: 26,000 casualties in 36 days of combat. Roughly one American for every three who landed on Iwo Jima became a casualty. This day provides a unique opportunity for each guest to honor the men who fought in this historic battle, as well as the Gold Star Families who also gave so much for the capture of this island. Time is provided to absorb as much of the atmosphere and the emotion involved in this iconic American battle before returning to Guam this evening.

Accommodations: Dusit Thani Resort (B, L, D)



## From Our Collection

### John Barton Leonard Photo

John Barton Leonard served as a war correspondent in the Asia-Pacific Theater, and was present for the assault on Iwo Jima. This photo was taken on "Iwo Jima Day," as transcribed on the handwritten caption. "Among rocks in the foreground you can see emplacements. To the right are tanks on high ground - where they didn't stay long. Small arrows are emplacements which flanked beach. Large arrow is tank but what are not visible are men, which were running and dropping - and bullets which were criss crossing over beach."

Gift in Memory of John Barton Leonard 2017.003



PHOTO PAGE 40: Service member dog tags at Iwo Jima Memorial. Courtesy of Frank Aymami. PHOTO PAGE 41 TOP LEFT PHOTO: Boeing B-29 wreckage left behind. Courtesy of Frank Aymami. PAGE 41 TOP RIGHT PHOTO: From the crest of Mt. Suribachi, the American flag waves in triumph over Iwo Jima after US Marines had fought their way inch by inch up its steep lava-encrusted slopes, February 23, 1945. ©CORBIS / Corbis via Getty Images.





PHOTO PAGE 42: Memorial plaque at Asan Beach. Courtesy of Frank Aymami. PHOTO PAGE 43: Memorial, War in the Pacific National Historical Park, Guam, US Territory. Courtesy of imageBROKER / Alamy Stock Photo.



## Day 9, March 24: Guam

Enjoy the day at leisure in Guam to unwind from the emotionally charged day on Iwo Jima. Take advantage of the amenities at the Dusit Thani Resort, participate in a cultural excursion, or visit the Senator Antonio M. Palomo Guam Museum & Educational Facility. In the evening, a special Farewell Reception and Dinner recaps the highlights of the tour and offers a glimpse of what is to come on the *Road to Tokyo* and *The Battle for Peleliu* optional post-tour extension programs.

*Accommodations: Dusit Thani Resort (B, R, D)*

## Day 10, March 25: Depart to the US

Depart the Dusit Thani Resort this morning and transfer to the Guam International Airport for flights home or onward to one of our optional extension programs. (B)



## From Our Collection

The tour examines cultural differences, logistical challenges, and the staggering range of extreme conditions that confronted American military forces. Conveyed through artifacts from the Museum's collection (including the watch worn by the pilot who dropped the atomic bomb), oral histories, world-renowned historians, and veterans who experienced the war first-hand, this journey is the story of a world that was unimaginably alien to the American GIs—a conflict of searing brutality, and a theater of war where nature could be as dangerous as the enemy.



### Japanese Flag

This flag was taken off the body of a dead Japanese soldier by Bruce Burga, a Marine in the 2nd Marine Division on Saipan. The handwritten script on the flag identifies the deceased as a member of an elite unit, the Japanese Special Naval Landing Forces, and describes a victorious combat parachute jump the unit conducted in Indonesia in 1942. The dead Japanese soldier's entire unit was wiped out by naval gunfire on the night of June 16, 1944.

### Jack Lucas Wallet

Shortly before the Battle of Iwo Jima, Jack Lucas penned this note to put into his wallet. Lucas wanted to be sure that the wallet, along with the \$16 it contained, would be returned to his mother, Mrs. Radford Jones, if anything should happen to him. During the battle, Lucas threw himself on two Japanese hand grenades and was badly injured, an action for which the 17-year-old marine received the Medal of Honor.

Gift of Jack Lucas 2001.465.001 -.002



### John Barton Leonard Map

Item from the career of John Barton Leonard who served as a war correspondent in the Asia-Pacific during the war. Leonard was present for the assault on Iwo Jima and the recapture of the Philippines. He later wrote about the atomic bombings, the end of the war, and postwar period. Pictured here is a Naval Gunfire Map listing specific areas for the US fleet to shell with which type of shell and for how long for Iwo Jima.

Gift in Memory of John Barton Leonard 2017.003

### Marine Corps Window Flag

Hung in the window of Roy Edward and Marie Green Skinner's home in Cleveland, Ohio for son Jim Skinner, 3rd Marine Division, "A" Company, 19th Engineers; Bougainville, Guam, Iwo Jima.

Gift of Tom Cain 2004.027.001





OPTIONAL POST-TOUR EXTENSION

# The Battle for Peleliu

Peleliu & Palau with Richard Frank

MARCH 25 – 29, 2019

\$3,999 per person based on double occupancy • \$5,599 single occupancy

*When booked by December 28, 2018. Price does not include \$129 per person in taxes & fees.*

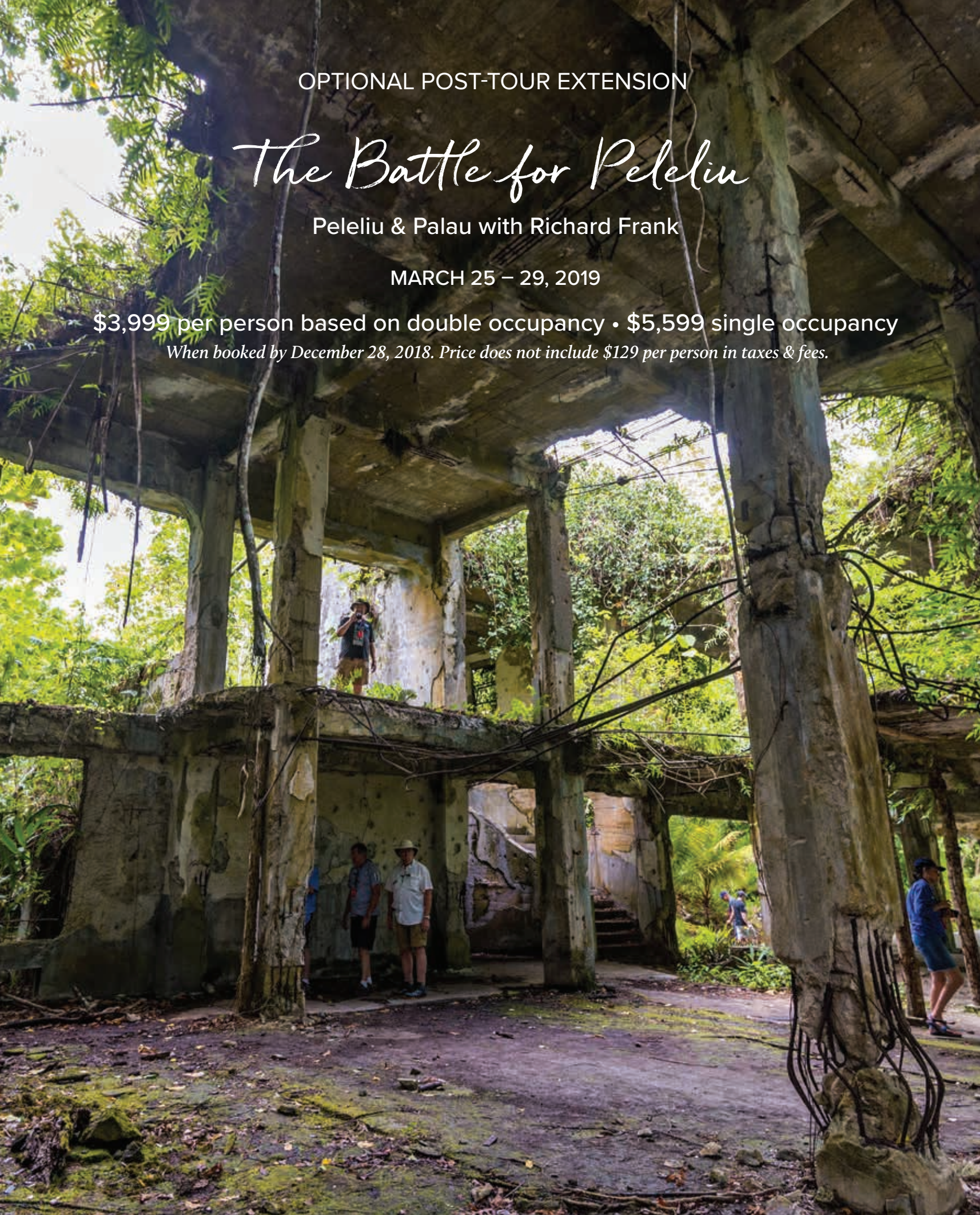


PHOTO: Japanese Administration Building at the airfield in Peleliu. Courtesy of Frank Aymami.

Join the Museum on a journey of a lifetime to an island populated with so many WWII artifacts that it is a living battlefield museum in its own right. Explore the landing beaches and relics of an island visited by only handfuls of tourists each year, and walk the landscape that continues to embrace the souls of the thousands of American soldiers that perished here. A combination of local battlefield guides, expert WWII Museum historians, and international War in the Pacific expert and featured historian Richard Frank will illuminate the sights and sounds of an island frozen in time.

Part of the independent nation of Palau, Peleliu measures roughly six miles long and two miles wide. The island's infrastructure is built upon roads constructed by the Seabees in the months after the battle ended. Just beyond the roads lies a network of runways, bunkers, and caves that all tell a story. Our tour highlights include stopping at key sights that are immortalized in the HBO miniseries *The Pacific*, including the heavily defended landing beaches and airfield, as well as the accompanying administration building, Bloody Nose Ridge, the remains of a Japanese Zero, Japanese bunkers and caves, and numerous Marine Corps and US Army landing craft scattered throughout the island.

On the last day on Peleliu, choose between excursions to the mud baths of the Rock Islands, a deep sea fishing experience, or a cultural tour of the island's capital city of Babeldaob, whose capital building is a replica of the American capital.

Accommodations are at the five-star Palau Pacific Resort on the nearby island of Koror, and transportation each day to Peleliu is aboard a comfortable, privately chartered ship sailing through the Rock Islands, a UNESCO World Heritage Site, and past a submerged Japanese Zero. Don't miss this unique journey into one of the hardest-won victories in the Pacific.



PHOTO: Japanese 20mm canon, Peleliu

## Tour Inclusions

- Four nights accommodation at the five-star Palau Pacific Resort in oceanfront rooms
- Breakfast daily (Days 2, 3 and 4)
- Private catered lunch on Peleliu's Orange Beach
- Two waterside receptions at the Palau Pacific Resort
- Private Farewell Dinner
- Bottled water and cold towels while touring
- All admission fees to museums and attractions (where applicable)
- Gratuities to drivers, guides, and porters
- All land excursions led by expert local guides and WWII Museum historians



PHOTO: 1st Marine Division Memorial, Peleliu. Courtesy of Frank Aymami.



OPTIONAL POST-TOUR EXTENSION

# The Road to Tokyo

Tokyo & Hiroshima with Jonathan Parshall

MARCH 25 – 29, 2019

\$3,999 per person based on double occupancy • \$5,599 single occupancy

*When booked by December 28, 2018. Price does not include \$129 per person in taxes & fees.*



PHOTO: View of the Atomic Bomb Dome (Genbaku Dome) at dusk - Hiroshima, Japan.



PHOTO: Statue in Hiroshima Peace Park.

After visiting Pearl Harbor, exploring the liberation of Saipan, and standing over the atomic bomb pits on Tinian, The National WWII Museum's Road to Tokyo optional post-tour extension takes guests to the cities of Tokyo and Hiroshima—a moving close to an emotional journey.

The symbolism of the War in the Pacific is easily understood by two wristwatches locked in two significant moments in history: Roy "Swede" Boreen's Bulova that stopped at 8:04 a.m. on December 7, 1941, in Pearl Harbor; and the watch belonging to Akito Kawagoe, a Japanese soldier stationed just over one mile from the blast, that stopped just after 8:15 a.m. on August 6, 1945, seconds after the atomic bomb detonation in Hiroshima.

Along the way, engage in discussion of the Japanese perspectives of the war and their methods of memorialization. A visit to the Yushukan War Memorial in Tokyo is likely to inspire discussion points at an evening lecture with featured historian Jon Parshall. The National Showa Memorial Museum highlights the condition of Japanese civilians during the war years. Once in Hiroshima, travel to the nearby maritime city of Kure and the "Yamato Museum" with a 1/10 scale model of the largest battleship ever built, and finish the tour at the Hiroshima Peace Memorial Park and the nearby Atomic Bomb Dome. Standing at ground zero is a fitting end to a remarkable journey through the War in the Pacific.

## Tour Inclusions

- Two nights accommodation at the five-star Westin Hotel Tokyo
- Two nights accommodation at the four-star Sheraton Hotel Hiroshima
- Breakfast daily (Days 2, 3 and 4)
- One lunch
- Private Farewell Reception & Dinner
- Air-conditioned motor coach
- Bottled water and cold towels while touring
- All admission fees to museums and attractions (where applicable)
- Gratuities to drivers, guides, and porters
- All land excursions led by expert local guides, and WWII Museum historians



PHOTO: In front of the Meiji Building, Tokyo - October 1945.  
Courtesy of Sam Thompson.



*The Moana Lobby*



## *Distinctive Accommodations*

### **Westin Moana Surfrider Hotel**

A National WWII Museum favorite, in the heart of Waikiki Beach, the Moana Surfrider opened in 1901 and is often referred to as the “First Lady of Waikiki.” This oceanfront hotel is a legendary landmark and remains a premier five-star resort property on the island.

The Tower Ocean View rooms measure 222 – 322 square feet and offer:

- Private balcony
- Westin’s signature Heavenly Beds
- Well-appointed granite baths with Westin Heavenly Spa bath products
- Complimentary Wi-Fi
- 32” LCD television
- Complimentary Kona Coffee & Tazo Teas

The property includes two excellent dining venues offering excellent views of the beach-front, along with two lounges and a convenient café offering light bites.

*The Veranda*



*Partial Ocean View Room*





*The Kensington Hotel  
Aerial View*



## *Distinctive Accommodations*

### **The Kensington Hotel Saipan**

Newly renovated, this hotel's unique and luxurious boutique design make it a standout in our itinerary. Nearly 400 square feet, our Royal Deluxe room category located on floors 6 through 9 at this property assure incredible views the azure waters and white sands at Pau Pau Beach. Accommodations include:

- All-inclusive meal and beverage package
- Four hundred thread-count sheets and premium mattresses
- Spa quality bath amenities with spacious shower
- Attractive nautical-style design with calming color palettes
- 50" LED television
- Complimentary in-room minibar

*Deluxe Room*



*Hotel Exterior*



*Lobby*





Dusit Thani Restaurant



## Distinctive Accommodations

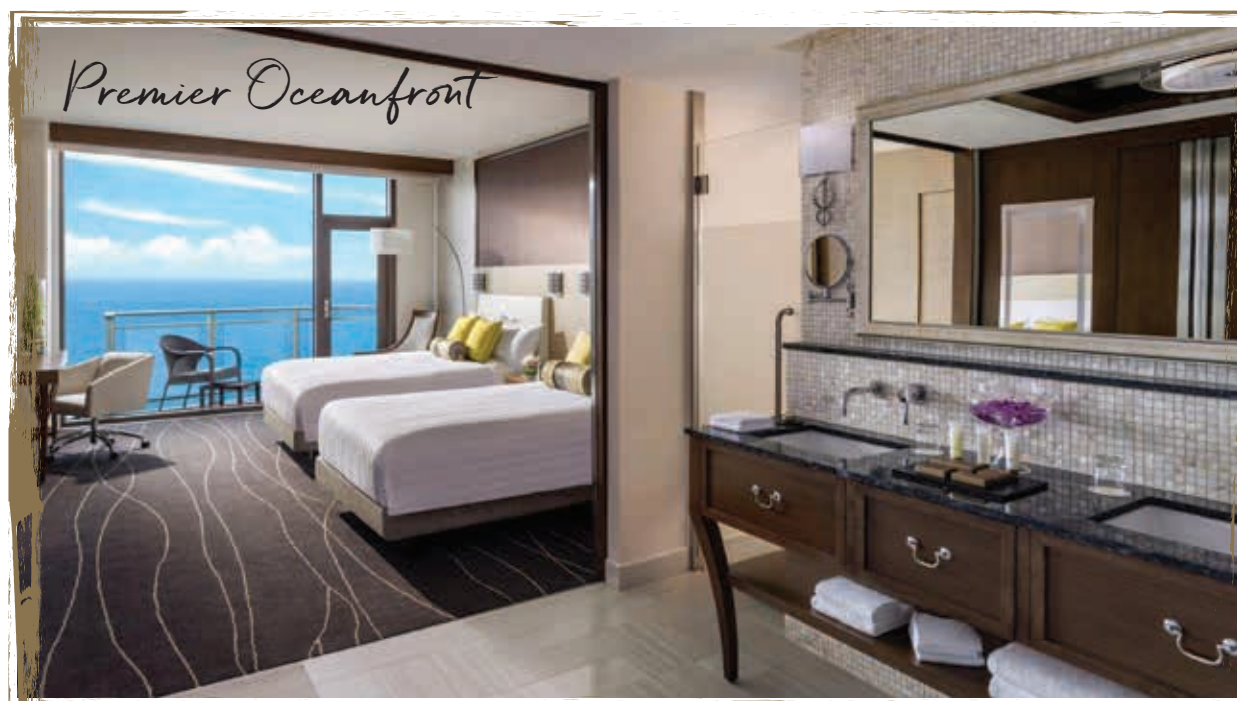
### Dusit Thani Resort Guam

Located on the island's magnificent Tumon Bay, the newest hotel on the island of Guam is the most luxurious yet. Spacious, well-appointed Deluxe Oceanfront guest rooms measure more than 450 square feet, and feature a expansive balcony offering stunning panoramic views of the Philippine Sea. The Deluxe Oceanfront rooms provide:

- Complimentary Wi-Fi throughout the hotel property
- Bottled water, replenished daily
- Satellite television
- Bathrobe, slippers, hairdryer, and spa-quality bath amenities
- Selection of daily newspapers and magazines
- Individual reading lights

Offering four dining venues, the Dusit Thani Guam offers guests an opportunity to enjoy an eclectic mix of dining options. The hotel's lobby lounge offers a terrace from which to enjoy the spectacular sunsets, along with a gourmet coffee shop. World-class facilities assure guests a memorable and comfortable stay. Enjoy a modern fitness center, pool, and the hotel's captivating Devarana Spa, which includes traditional Thai treatments from the hotel brand's homeland, as well as Chamorro inspired massage, influenced by the indigenous people of the island. Within steps of the hotel, the area features luxury shopping opportunities, and a myriad of dining and entertainment options for your enjoyment.

Premier Oceanfront



Restaurant





*Palau Pacific Resort  
Lobby*



## *Distinctive Post-Tour Accommodations*

### **Palau Pacific Resort**

A TripAdvisor Certificate of Excellence recipient, Palau Pacific Resort sits on 64 acres of lush tropical gardens hugged by a spectacular private white sand beach. This 165-room resort is decorated in traditional, but elegant island-style, and provides luxurious amenities and service of a world-class property. A comfortable retreat from which to explore the island of Peleliu.

There are both inside and outside dining and lounge venues, swimming pool, in-house dive shop, hair salon, art gallery, sundry shopping, and comfortable open air seating areas from which to enjoy the evening tradewinds. One of the Republic of Palau's leading hotels, as recognized by World Travel Awards, the resort offers guests a full array of leisure activities and resort facilities conveniently available on property, including the world-renowned Mandara Spa.

*Coconut Terrace  
Restaurant*



*Meduu Ribtal Fine  
Dining Restaurant*







## *Distinctive Post-Tour Accommodations*

### **The Westin Tokyo Hotel**

The Westin Tokyo welcomes you to the heart of the most metropolitan city in Japan. Located in the quiet upscale area of Yebisu, The Westin Tokyo is perfectly positioned for your stay. Spacious accommodations with excellent views of the city, classic European décor and five-star amenities, the hotel proudly stands in the ranks of some of the best hotels in Tokyo. The hotel also offers multiple dining and lounge venues, workout facilities, and full-service spa.

## *Distinctive Post-Tour Accommodations*

### **The Sheraton Grand Hiroshima Hotel**

The Sheraton Grand Hiroshima Hotel is the premier property in Hiroshima. Ideally located, the hotel offers two dining venues, two lounges, an indoor pool, a Jacuzzi, and a fitness center. The deluxe guest rooms boast comfortable seating areas with writing desks, and offer 376 square feet of living space.



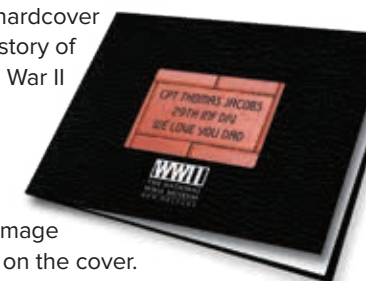
Create a lasting tribute to loved ones who served their country with a commemorative brick at The National WWII Museum.

Create a lasting tribute to loved ones who served their country with a commemorative brick at The National WWII Museum.



For only \$250, you can honor your personal hero with a classic red brick to be installed on our New Orleans campus. Three lines of personalized text allow you to list your name, the name of a WWII veteran or civilian, a military unit, squadron, ship, or branch of the armed forces active during the war—the choice is yours. These fathers and grandfathers, sons and daughters, friends and neighbors overcame a once-in-a-generation challenge and they deserve a memorial that will last for generations to come. Order by December 31, 2018 to be included in our Spring 2019 Installation.

This elegant, 44-page hardcover book immortalizes the story of America's role in World War II through powerful and awe-inspiring images from the Museum's archive and includes a digitally reproduced image of your engraved brick on the cover.



BRICK TEXT

[illegible]

(Please Print Clearly) 18 characters per line including spaces

Mrs. Mr. Ms. \_\_\_\_\_

Address \_\_\_\_\_

City \_\_\_\_\_ State \_\_\_\_\_ Zip \_\_\_\_\_

Telephone (Day) \_\_\_\_\_ (Evening) \_\_\_\_\_

Fax orders to 504-527-6088 or mail to:  
The National WWII Museum, Road to Victory Brick Program, 945 Magazine Street, New Orleans, LA 70130.  
*2019 Victory in the Pacific*

ww2brick7.org | 1-877-813-3329 X 500 | bricks@nationalww2museum.org

The National WWII Museum's Road to Victory brick program honors the WWII generation, the American heroes who served during the war, and their families. The goal of our program is to celebrate the American spirit while forging a link between the present generation and the generation that fought to secure our nation's freedom during World War II.

Therefore, the Museum reserves the right to deny requests for inscriptions that might be considered offensive or inappropriate to those who sacrificed during the WWII era, or messages that do not align with the Museum's mission, which is to tell the story of the American experience in the war that changed the world—why it was fought, how it was won, and what it means today—so that all generations will understand the price of freedom and be inspired by what they learn.

60 | Visit us at [ww2museumtours.org](http://ww2museumtours.org)

Call us at 1-877-813-3329 X 257 | 61



TERMS & CONDITIONS

TOUR FARE

Your tour fare covers arrangements and services including accommodations, meals as per the itinerary, gratuities, ground transportation, guiding services, and special tour inclusions as described within the travel program brochures and on the Museum’s web-site at: [www.ww2museumtours.org](http://www.ww2museumtours.org). All fares are quoted in US Dollars, are per guest and are based on double occupancy. As indicated below, airfare to and from the tour destination is not included in your tour fare The Museum accepts no liability for the purchase of non-refundable airline tickets.

Prices quoted are based on fares in effect at the time of printing and are subject to change at any time. On land and/or cruise programs, up to the time of full payment the Museum reserves the right to increase the tour price in the event of cost increases due to changes in supplier costs, currency fluctuations or fuel or energy surcharges and all such increases are to be paid to the Museum upon notice to the tour participant of such increases

NOT INCLUDED

Taxes, unless otherwise noted in the travel program brochure; passport, visas and associated fees; personal expenses such as laundry, telephone calls and Internet access; accident/ sickness, trip cancellation, and baggage insurance; gratuities to ship and hotel personnel, unless otherwise noted in the travel program brochure; optional sightseeing excursions; airfare, baggage charges on aircraft; local departure air/airport taxes; and associated local taxes, airport facility and security taxes and federal inspection fees not listed as included in the travel program; transfers and baggage handling to/from airport/hotel/ ship on day(s) of arrival and/or departure if you are arriving earlier or later than and/or departing earlier or later than the scheduled group transfer(s); any overnight expenses on land due to flight schedule(s) or delays; meals, alcoholic or other beverages and all other services not specifically mentioned as included in the travel program.

PAYMENT SCHEDULE

To reserve your participation, submit an initial deposit of \$2,000 per person within five (5) days of booking. A \$750 per person deposit is due for any pre and/or post program options that you select. Final payment is due December 15, 2017. All reservations are subject to cancellation if payments are not received by the due date. Payment by check is preferred in order to reduce costs to the Museum. VISA, MasterCard, Discover and American Express are also accepted.

TRAVEL INSURANCE

Because our cancellation policy is strictly enforced, we strongly recommend that you purchase trip cancellation insurance. In the event that you must cancel your participation, trip cancellation insurance may be your only source of reimbursement. Travel Cancellation is offered through the Museum’s Travel Department and information is included in your initial confirmation packet accordingly.

HEALTH, MEDICAL AND TOUR REQUIREMENTS

All guests are required to advise in writing to the Museum at the time their reservation is made if they have:

- Any physical or mental condition that may require medical or professional treatment or attention during the tour;
- Any condition that may pose a risk to one’s self and/or other participants on tour;
- Any condition that may require health aids, i.e.; oxygen, walkers, crutches, etc., or any intention or need to use a wheelchair while on the tour.

By booking passage the guest represents and warrants that he/she is physically and otherwise fit to travel and that guests will comply at all times with applicable rules and regulations of the Museum. The Museum reserves the right without liability to require a passenger to leave the tour or to refuse to accept a guest as a tour participant who, in the sole judgment of the Museum, is unfit to travel, is a danger to himself or herself or to others, does not follow instructions of the tour leader, may distract from the enjoyment of the trip by others or may require care beyond that which the Museum is reasonably able to provide.

We highly recommend that participants purchase a travel insurance package that provides medical coverage since most US policies do not provide coverage outside the US.

LUGGAGE

Luggage will be limited to one (1) suitcase and one (1) carry-on per person to ensure that there is enough room on the motor coach for all passenger luggage. All luggage must be securely packed and clearly labeled. We recommend that all participants secure baggage loss and damage insurance that may be purchased for this tour. Please see airline weight and size restrictions for luggage on international flights.

The Museum is not responsible for loss or damage to luggage or any other personal item during air travel, while in a hotel during land programs, on a cruise or while on shore excursions. Under no circumstances may dangerous items (i.e. explosives, firearms, liquid oxygen, combustible or illegal substances) be taken on the tour. We recommend that you hand carry travel documents (passports and tour tickets), medications and valuables, and check with your airline regarding carry-on baggage restrictions. These items are the full responsibility of the guest at all times. The Museum shall not be responsible for the loss of or damage to such personal items.

LAND TOURS, LECTURES AND PERSONALITIES

All tours are operated by independent contractors. These independent contractors may impose additional terms and conditions and limitations of liability on tour participants. Other independent contractors retained by the Museum such as lecturers, guest personalities and entertainers are subject to change and/or cancellation without notice.

TRAVEL DOCUMENTS

All travel documents (air and tour tickets, passport) are the responsibility of the guest. It is also your responsibility to comply with all customs requirements. Without the required documents, you may be denied boarding and the Museum will not be liable for such denial or bear any financial responsibilities as a result thereof.

Security measures imposed by governments may change from time to time and you will be required to comply with them. We will endeavor to provide you with notice of measures which may affect you; but complying with any such requirement is your responsibility.

TRAVEL WARNINGS AND ADVISORIES

The Museum strongly recommends that tour participants review the destination country’s specific information at <https://travel.state.gov/content/passports/en/alertswarnings.html> and <https://wwwnc.cdc.gov/travel/notices>.

LIMITS ON THE NATIONAL WWII MUSEUM RESPONSIBILITY

The National World War II Museum Inc., a New Orleans, Louisiana based nonprofit 501C(3) organization and its employees, shareholders, subsidiaries, affiliates, officers, directors or trustees, successors, and assigns (collectively “the Museum”), does not own or operate any entity which is to or does provide goods or services for your trip including; lodging facilities, airline, vessel, or other transportation companies, guides or guide services, local ground operators, providers or organizers of optional excursions, food service or entertainment providers, etc. All such persons and entities are independent contractors. As a result, the Museum is not liable for any negligent or willful act or failure to act of any such person or entity or of any other third party.

In addition and without limitation, the Museum is not responsible for any injury, loss, death, inconvenience, delay, or damage to person or property in connection with the provision of any goods or services whether resulting from, but not limited to, acts of God or force majeure, acts of government, acts of war or civil unrest, insurrection or revolt, bites from or attacks by animals, insects or pests, strikes or other labor activities, criminal or terrorist activities of any kind or the threat thereof, sickness, illness, epidemics or

the threat thereof, the lack of availability of or access to medical attention or the quality thereof, overbooking or downgrading of accommodations, mechanical or other failure of airplanes, vessels or other means of transportation, or for any failure of any transportation mechanism to arrive or depart timely or safely. Participants assume all such risks as well as the risk of negligence by the Museum and specifically releases the Museum therefrom.

If due to weather, flight schedules or other uncontrollable factors, you are required to spend an additional night(s), you will be responsible for your own hotel, transfers and meal costs. Baggage is entirely at owner’s risk. The right is reserved to decline to accept as a trip participant, or remove from a trip, without refund, any person the Museum judges to be incapable of meeting the rigors and requirements of participating in the activities, or who is abusive to other trip participants, leaders or third parties, or who the Museum determines to detract from the enjoyment of the trip by others. Specific room/cabin assignments are within the sole discretion of the hotel or cruise line.

The Museum reserves the right to change the itinerary or trip features at any time and for any reason, with or without notice, and the Museum shall not be liable for any loss of any kind as a result of any such changes. Ship schedules, port calls, hours of arrival and departure, sightseeing events, special programs and guest lecture series (if applicable), are subject to change or cancellation without prior notice. The Museum is not responsible therefore and is not required to compensate passengers under these circumstances. The Museum may cancel a trip (or an option) for any reason whatsoever; if so, its sole responsibility is to refund monies paid by the participant to it. The Museum is not required to cancel any trip for any reason including without limitation, United States Department of State, World Health Organization or other Warnings or Advisories of any kind. The Museum is not responsible for penalties assessed by air carriers resulting from operational and/or itinerary changes, even if the Museum makes the flight arrangements or cancels the trip. The Museum reserves the right to substitute vessels, hotels, itineraries or attractions for those listed in this brochure.

BINDING ARBITRATION

I agree that any dispute concerning, relating or referring to this Agreement, the brochure or any other literature concerning my trip, or the trip itself, shall be resolved exclusively by binding arbitration pursuant to the Federal Arbitration Act, 9 U.S.C. §§1-16, either according to the then existing Commercial Rules of the American Arbitration Association (AAA) or pursuant to the Comprehensive Arbitration Rules & Procedures of the Judicial Arbitration and Mediation Services, Inc. (JAMS). Such proceedings will be governed by substantive (but not procedural) Louisiana law and will take place in New Orleans, LA. The arbitrator and not any federal, state, or local court or agency shall have exclusive authority to resolve any dispute relating to the interpretation, applicability, enforceability, conscionability, or formation of this contract, including but not limited to any claim that all or any part of this contract is void or voidable. Please understand that by agreeing to these terms and conditions, you (and we) are waiving our right to a trial by jury.

The Museum is not responsible for misprints in tour promotional material.

CANCELLATIONS	CANCELLATION NOTICE RECEIVED BEFORE TOUR START DATE FEES	TOUR CANCELLATION FEES	POST-TOUR CANCELLATION
Should it be necessary to cancel your reservation, please contact the Museum immediately at 1-877-813-3329 x 257. Cancellations for all or any part of a tour including optional pre and/or post tour extension programs will not be effective until received in writing. Should you have to cancel, the following terms will apply:	171 days or more	\$1,000 per person	\$100 per person
	170-91 days	\$2,000 per person	\$200 per person
	90-61 days	60% of full tour cost (incl Pre and/or Post Tour)*	
	60 days or less	100% of full tour cost (incl Pre and/or Post Tour)*	
	No Show	100% of full tour cost (incl Pre and/or Post Tour)*	
	Early Return	100% of full tour cost (incl Pre and/or Post Tour)*	
*In addition, applicable cancellation fees for confirmed additional hotel nights may apply. **Tour cost is defined as the cost of any cruise, land, or air element purchased from The National WWII Museum.			





TravelSafe Classic Vacation Protection Plan

The National WWII Museum recommends the purchase of TravelSafe Insurance to protect your belongings and, most importantly, you! The Classic plan provides a package of benefits including medical, baggage, and more.

Most Common Reasons for Trip Cancellation is Covered

Serious illness of yourself, immediate family member, traveling companion, death in the family, etc. (Refer to Classic T915C at www.travelsafe.com for a full list of covered reasons for Trip Cancellation/Trip Interruption)\*

Waiver for Pre-Existing Medical Conditions

Available on Classic when plan is purchased within 21 days of confirmed deposit and you are not disabled at the time of purchase.

Schedule of Benefits

Trip Cancellation .....	Trip Cost
Trip Interruption .....	150% of Trip Cost
Missed Connection.....	\$2,500
Travel Delay (Up to \$150 Per Day) .....	\$750
Itinerary Change .....	\$250 Medical Expense/Emergency
Accident and Sickness Medical Expense .....	\$100,000
Emergency Medical Evacuation/Repatriation of Remains ....	\$1,000,000
Non-Medical Emergency Evacuation .....	\$25,000
24-Hour Accidental Death and Dismemberment .....	\$25,000
Baggage and Personal Effects .....	\$2,500
Baggage Delay.....	\$250

For questions regarding the Classic Vacation Plan (T925C), contact TravelSafe at 1-800-523-8020 or visit www.travelsafe.com. Provide Agency Code: THELA01 when purchasing the plan.

\*Some variances in benefits applies from state to state. Refer to the Certificate of Insurance for your state for coverage details.

Victory in the Pacific

Pearl Harbor, Saipan, Tinian, Guam & The 74th Commemoration of Iwo Jima

SEND TO:

The National WWII Museum Travel  
945 Magazine Street, New Orleans, LA 70130

Toll Free: 1-877-813-3329 x 257  
Or: visit ww2museumtours.org  
Email: travel@nationalww2museum.org

PLEASE MAKE MY/OUR RESERVATION FOR VICTORY IN THE PACIFIC TOUR—March 15 – 25, 2019

Victory in the Pacific Tour – March 15 – 25, 2019

☐ Double occupancy \$14,999

☐ Single occupancy \$20,999

\*When booked by December 28, 2018. \$329pp taxes & fees additional.

Bedding preference: ☐ Double (two beds)

☐ Queen

OPTIONAL PRE & POST-TOUR EXTENSION PROGRAMS

PRE-TOUR: Remembering the Ultimate Sacrifice – March 14 – 15, 2019

☐ Double Occupancy \$999\*

☐ Single occupancy \$1,399\*

\*When booked by December 28, 2018. \$59pp taxes & fees additional.

POST-TOUR: The Battle For Peleliu – March 25 – 29, 2019

☐ Double Occupancy \$3,999\*

☐ Single occupancy \$5,599\*

POST-TOUR: The Road to Tokyo – March 25 – 29, 2019

☐ Double Occupancy \$3,999\*

☐ Single occupancy \$5,599\*

\*When booked by December 28, 2018. \$129pp taxes & fees additional.

IMPORTANT: ALL PASSENGERS MUST TRAVEL WITH A PASSPORT VALID AT LEAST 6 MONTHS BEYOND THEIR RETURN DATE.

Guest 1: Full Legal Name (as it appears on your passport)

TITLE	FIRST	MIDDLE	LAST
-------	-------	--------	------

Mailing Address: \_\_\_\_\_

City: \_\_\_\_\_ State: \_\_\_\_\_ ZIP: \_\_\_\_\_

Home Ph: \_\_\_\_\_/\_\_\_\_\_ Cell: \_\_\_\_\_/\_\_\_\_\_

Roommate (if different from below): \_\_\_\_\_

EMAIL ADDRESS	PREFERRED NAME ON BADGE
---------------	-------------------------

BIRTH DATE \_\_\_\_\_

Guest 2: Full Legal Name (as it appears on your passport)

TITLE	FIRST	MIDDLE	LAST
-------	-------	--------	------

EMAIL ADDRESS \_\_\_\_\_

PREFERRED NAME ON BADGE \_\_\_\_\_

BIRTH DATE \_\_\_\_\_

DEPOSIT AND FINAL PAYMENT: A deposit of \$2,000 per person plus \$750 deposit per person for each Post-Tour Extension, if applicable, is due with your reservation application. **To receive the Early Booking Savings Discount, booking and deposit must be made by December 28, 2018.** Applicable taxes and fees will be added to your final invoice.

Please reserve \_\_\_\_\_ space(s). Enclosed is my/our deposit for \$\_\_\_\_\_.

Deposits and FINAL payments may be made by personal check, American Express, MasterCard, Visa, and Discover.

☐ Accept my check (Make checks payable to The National WWII Museum)

Charge my: ☐ MasterCard ☐ Visa ☐ American Express ☐ Discover

Card # \_\_\_\_\_ CVV/Security Code \_\_\_\_\_ Expires \_\_\_\_\_/\_\_\_\_\_

\_\_\_\_\_  
SIGNATURE AS IT APPEARS ON CREDIT CARD

Making a deposit or acceptance or use of any vouchers, tickets, goods or services shall be deemed consent to and acceptance of the terms and conditions stated in the applicable Terms and Conditions agreement, including limitations on responsibility and liability.





The National WWII Museum  
945 Magazine Street  
New Orleans, LA 70130

SAVE \$2,000 PER COUPLE AND RECEIVE COMPLIMENTARY AIR WHEN BOOKED BY DECEMBER 28, 2018

For reservations and information call  
**1-877-813-3329 X 257**

The National WWII Museum Travel  
945 Magazine Street • New Orleans, LA 70130  
[ww2museumtours.org](http://ww2museumtours.org)

PHOTO FRONT COVER: Aerial view of Iwo Jima in 1945. Courtesy of The Asahi Shimbun via Getty Images  
PHOTO BACK COVER: Frank Pomroy of H-2-1st Marine Division rests after 36 hours of continuous combat on Peleliu. Courtesy of The National WWII Museum archives.